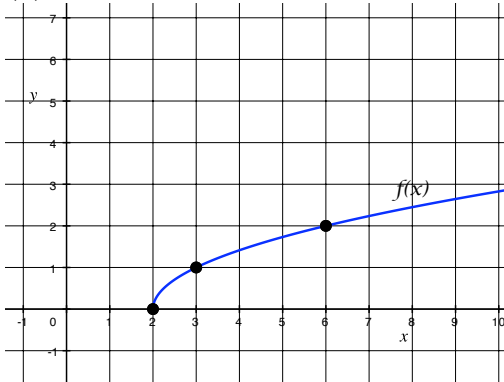


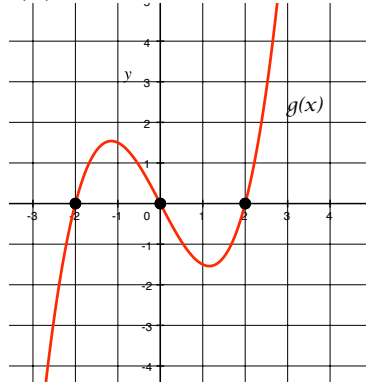
Math 98 Worksheet #9
August 7, 2007

1. Determine if the following functions are one-to-one given the graphs below. If the function is one-to-one, sketch the inverse function. Include at least 2 points on the graph of the inverse function.

(a)



(b)



2. Find the inverse functions for the following functions.

(a) $f(x) = 3x - 6$

(b) $g(x) = \sqrt[3]{x + 1}$

3. If h is a one-to-one function and $h(2) = 7$, what is $h^{-1}(7) = ?$ What is $h^{-1}(h(9)) = ?$
4. Graph the function $F(x) = 6^x$. What is the domain and range?