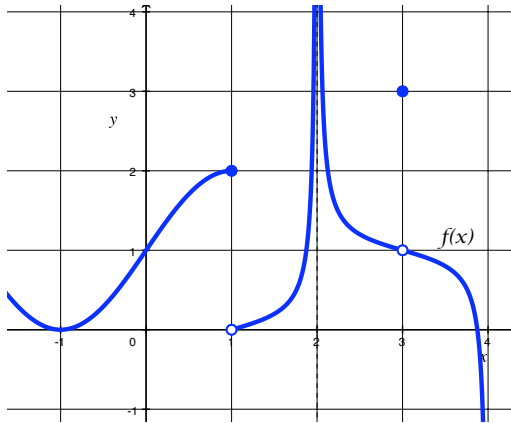


Math 151 Quiz #1
September 29, 2008

Name: _____

Show all work on a separate paper. Staple this sheet to your answers.

- (2 pts.) Find the domain of $g(t) = \sqrt{5t - 1}$.
- (2 pts.) Evaluate: (a) $\cos(3\pi/4)$ (b) $\arcsin(-1)$ Note: $\arcsin(-1) = \sin^{-1}(-1)$
- (2 pts.) Solve $3e^{x+5} = 12$.
- (4 pts.) Evaluate the following quantities for the given piecewise-defined function $f(x)$. If a limit does not exist, indicate this. If a limit is infinite, indicate whether it is $+\infty$ or $-\infty$.



(a) $\lim_{x \rightarrow 3} f(x)$

(b) $\lim_{x \rightarrow 2} f(x)$

(c) $\lim_{x \rightarrow 1^+} f(x)$

(d) $f(3)$