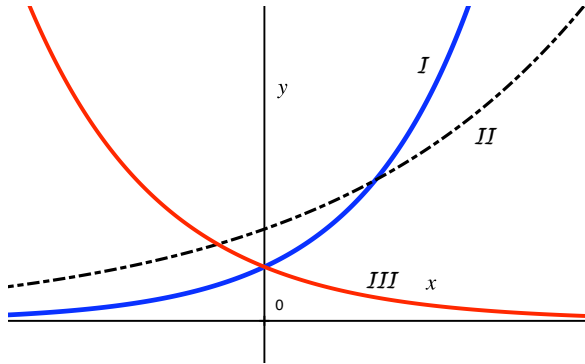


1. A population of monkeys is given by $P = 24.8(0.81)^t$ in millions at year t .
 - (a) (1 pt.) Give the initial population of monkeys.
 - (b) (2 pt.) Give the growth factor and the growth rate of the population. Is the population increasing or decreasing?
2. (a) (1 pt.) For the function $f(x) = -6^x$, find $f(2)$.
 - (b) (1 pt.) Find the y -coordinate of the point with an x -coordinate of 3 on the graph of $g(x) = 5(2)^x$.
3. (3 pts.) Match each exponential function to of the graphs I-III.



(a) $y = 2(1.8)^x$

(b) $y = 2(0.6)^x$

(c) $y = 3(1.3)^x$

4. (2 pts.) Find the equation of the exponential function through the points $(2, 8)$ and $(3, 32)$.