

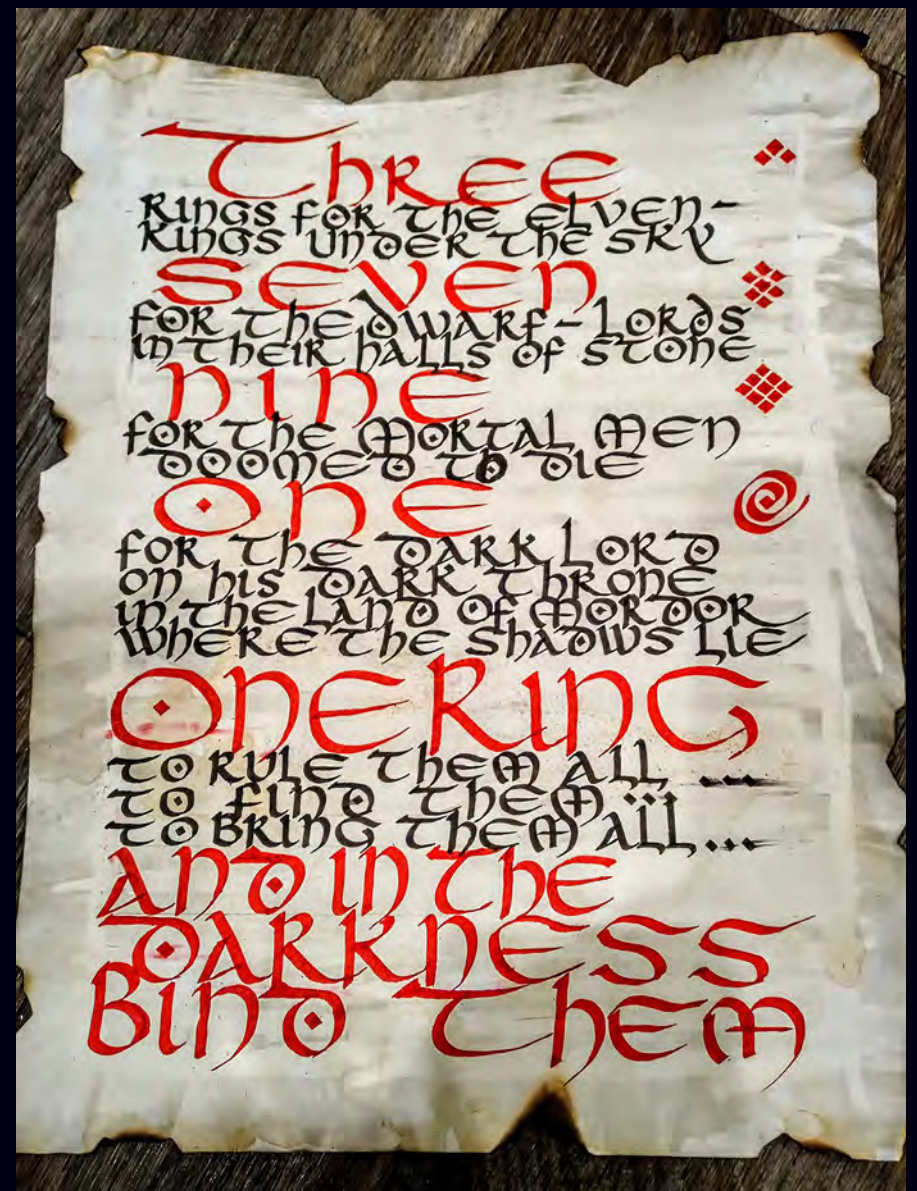
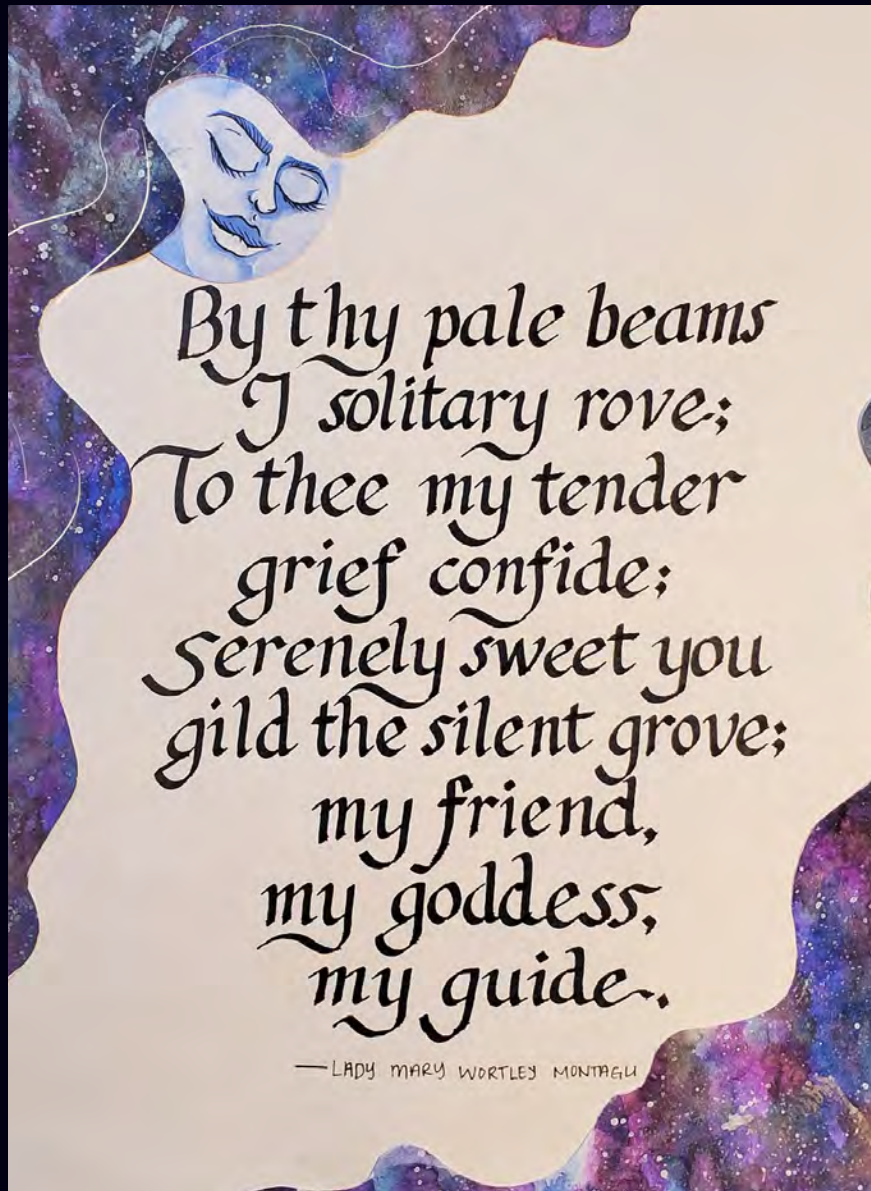
Shoreline Community College

Visual Communications Technology

Student Work Examples 2020-2022

VCT101 Graphic Design 1-Typography

Course Topics: Typography and Text, Learning InDesign, Design Process, Expressive Type, Critique, Grids, Gestalt, Calligraphy





VCT101-"Alien" Typography

VCT102 Page Layout

Course Topics: Design Process, Grid systems (Column, Modular and Object-based), Learning InDesign, Production/Press Ready skills, Web and Interface Skin Design, Advertising layout

Hiram M. Chittenden
Ballard Locks
 Where nature and engineering meet!

The Hiram M. Chittenden Locks, or Ballard Locks, is a complex of locks at the west end of Salmon Bay, in Seattle, Washington's Lake Washington Ship Canal, between the neighborhoods of Ballard to the north and Magnolia to the south.

The Ballard Locks carry more boat traffic than any other lock in the US, and the Locks, along with the fish ladder and the surrounding Carl S. English Jr. Botanical Gardens attract more than one million visitors annually, making it one of Seattle's top tourist attractions.

The construction of the locks profoundly reshaped the topography of Seattle and the surrounding area—lowering the water level of Lake Washington and Lake Union by 8.8 feet, adding miles of new waterfront land, reversing the flow of rivers, and leaving piers in the eastern half of Salmon Bay high and dry. The Locks are listed on the National Register of Historic Places and the American Society of Civil Engineers Historic Civil Engineering Landmarks.



The locks under construction.



The locks and associated facilities serve three purposes:

- To maintain the water level of the fresh water Lake Washington and Lake Union at 20 to 22 feet above sea level.
- To prevent the mixing of sea water from Puget Sound with the fresh water of the lakes (saltwater intrusion).
- To move boats from the water level of the lakes to the water level of Puget Sound, and vice versa.

History

Seattle developer James Moore, known today for the Moore Theatre (in Seattle) and Moore Haven, Florida, proposed a canal that could accommodate small ships, with two wooden locks connecting Salmon Bay to Shilshole Bay. Moore secured Congressional approval for his project. In April of the same year, Hiram M. Chittenden came to Seattle as the new Army District Engineer. Chittenden favored the same route to Shilshole Bay as Moore, but found the plan too modest, and potentially unsafe. Chittenden said Moore's hopeful budget of \$500,000 was insufficient, and the locks should be built to accommodate larger vessels, and that the wooden locks would eventually deteriorate and collapse, draining Lake Washington into Puget Sound.

Instead, Chittenden proposed a double concrete lock with steel gates, allowing small craft to pass with less waste.

Though Chittenden hoped to cap his career with the construction of the Locks, ill health forced him to retire in 1909, though he continued lobbying Congress for the project, and served as a consulting engineer and as a Seattle port commissioner until his death in October 1917.

In early 1909, the Washington State Legislature appropriated \$250,000, placed under the control of the Corps of Engineers, for excavation of the canal between Lake Union and Lake Washington.

Under Major James B. Caravanaugh, Chittenden's replacement as Seattle District Commander, construction of the Ballard, or Government, Locks, connecting Salmon Bay to Shilshole Bay began in 1911. In July 1912, the Locks gates were closed for the first time, turning Salmon Bay from saltwater to freshwater. The first ship passed through the locks on August 3, 1916. The locks officially opened for boat traffic on

ADVERTORIAL

ADVERTORIAL



Fish ladder viewing room.

May 8, 1917. The total cost of the project to that point was \$3.5 million, with \$2.5 million having come from the federal government and the rest from local governments.

The complex includes two locks and can elevate a 760-by-80-foot vessel 26 ft from the level of Puget Sound at a very low tide to the level of freshwater Salmon Bay, in 10-15 minutes. The locks handle both pleasure boats and commercial vessels, ranging from kayaks to fishing boats returning from the Bering Sea to cargo ships. Over 1 million tons of cargo, fuel, building materials, and seafood products pass through the locks each year.

Fish Ladder

The fish ladder at the Chittenden Locks is unusual—normally, fish ladders are located entirely within fresh water.

Pacific salmon hatch in lakes, rivers, and streams—or, nowadays fish hatcheries—migrate to sea, and only at the end of their life return to fresh water to spawn. Prior to the Locks construction, no significant salmon ran inside here, as there was only a small drainage stream from Lake Union into Salmon Bay. And for centuries, the Lushootseed

people had been dragging boats between the lakes upstream of the future locks, giving names like "carry a canoe" or "Wahwahwah," to the crossing points.

In order to provide enough water to operate the Locks, Cedar River was rerouted into Lake Washington (which was lowered 9 feet). Cedar River originally flowed into the Duwamish River along with the White River from the South. White River was rerouted into the Puyallup River. The Cedar and White Rivers did support significant Salmon runs but also created severe flooding conditions for the early settlers. The rerouting of these two major rivers was a mixed blessing—while reducing flood threats—the Duwamish River salmon runs were decimated. To rectify this situation, salmon runs were rerouted through the Locks, which included introducing a major run of Sockeye Salmon using stock from Baker River, Washington.

"Over 1 million tons of cargo, fuel, building materials, and seafood products pass through the locks each year."

The ladder was designed to use attraction water: fresh water flowing swiftly out the bottom of the fish ladder, in the direction opposite which anadromous fish migrate at the end of their lives. However, the attraction water from this first ladder was not effective. Instead, most salmon used the locks. This made them an easy target for predators; also, many were injured by hitting the walls and gates of the locks, or by hitting boat propellers.

The Corps rebuilt the fish ladder in 1976 by increasing the flow of attraction water and adding more weirs: most weirs are now

one foot higher than the previous one. The old fish ladder had only 10 "steps"; the new one has 21. A diffuser well mixes salt water gradually into the last 10 weirs. As a part of the rebuilding, the Corps also added an underground chamber with a viewing gallery.

The fish approaching the ladder smell the attraction water, recognizing the scent of Lake Washington and its tributaries. They enter the ladder, and either jump over each of the 21 weirs or swim through tunnel-like openings. They exit the ladder into the fresh water of Salmon Bay. They continue following the waterway to the lake, river, or stream where they were born. Once there, the females lay eggs, which the males fertilize. Most salmon die shortly after spawning.

The offspring remain in the fresh water until they are ready to migrate to the ocean as smolts. In a few years, the surviving adults return, climb the fish ladder, and reach their spawning ground to continue the life cycle. Of the millions of young fish born, only a relative few survive to adulthood. Causes of death include natural predators, commercial and sport fishing, disease, low stream flows, poor water quality, flooding, and concentrated developments along streams and lakes.

Visitors to the locks can observe the salmon through windows as they progress along their route. Peak viewing time is during spawning season beginning July through mid-August.



Fish Species

Among the species of salmonids migrating routinely through the ladder at the Chittenden Locks are Chinook (king) salmon, Coho (silver) salmon, Sockeye (red) salmon. Sockeye primarily migrate up the Issaquah Creek, and most end up at the Issaquah Hatchery. Steelhead once migrated through the Locks but none have been seen in years. The run is considered functionally extinct.

The Carl S. English Jr. Botanical Gardens (7 acres) are botanical gardens located on the grounds of the Hiram M. Chittenden Locks.

After the locks were built in 1911, landscape architect Carl English of the United States Army Corps of Engineers transformed the construction site into garden in an English landscape style. All told, he spent 43 years planting and tending the gardens. Today they contain more than 500 species and 1,500 varieties of plants from around the world, including fan palms, oaks, Mexican pines, rhododendrons, and a fine display of roses. The gardens also exhibit an extensiveuchsia display and a special section for lilacs in season.



Enjoying a concert in the Botanical Gardens.

Concerts

If you've never experienced a concert at the Locks, you haven't missed out as summer is on the way. Summertime concerts on the garden grounds are held every Saturday and Sunday all summer until Labor Day, and they are free! Most feature marching bands and jazz ensembles, but other music genres, including pop, Brazilian samba and ukulele, also appear in the schedule this year. For more information, visit our website: www.usace.army.mil/missions/Civil-Works/Locks-and-Dams/ChittendenLocks/

Getting There

3015 NW 54th Street, Seattle, Washington
 Botanical gardens open daily 7 a.m. to 9 p.m. (without charge.)

The grounds feature a visitor center, as well as the Carl S. English Jr. Botanical Gardens.
 The north parking lot adjacent to the Hiram M. Chittenden Locks is city-owned. Pay stations ensure adequate parking turnover of the limited spaces and minimize all-day parking by non-locks visitors.

Parking is \$2.00/hour for a maximum of three hours. Pay stations accept debit and credit cards, and coins. Payment is required for parking. Monday through Saturday from 8:00 a.m. to 6:00 p.m.



The Spillway

South of the small lock is a spillway dam with transfer gates used to regulate the freshwater levels of the ship canal and lakes. The gates on the dam release or store water to maintain the lake within a 2-ft range of 20 to 22 ft above sea level. Maintaining this lake level is necessary for floating bridges, mooring facilities, and vessel clearances under bridges.

"Sunlit frames" in the spillway help young salmon to pass safely downstream. Higher water levels are maintained in the summer to accommodate recreation as well as to allow the lakes to act as a water storage basin in anticipation of drought conditions.

Visitor Center hours:
 May-September, 10 a.m. to 6 p.m., open daily
 October-April, 10 a.m. to 4 p.m., closed Tuesdays and Wednesdays

ADVERTORIAL



JUNE 2022 | ROADTRIPPER | 73

CLEANEATS
cleaneatsmarket.com

\$10 OFF FIRST ORDER

Delivering your local organic farm to your family's table.

24 Hour Ordering

cleaneatsmarket.com

CLEANEATS

Pinot Noir Grapes 2.50 Case, Item 1028

Cotton Candy Grapes 1.50 Case, Item 1031

Bartlett Pears 1.50 Bag, Item 1032

Bing Cherries 2.50 Case, Item 1033

Fresh Local Strawberries 12 or Package, Item 1034

simply delicious.

FRUIT & VEGETABLES 24 Hour Ordering Delivering your local organic farm to your family's table. 5

cleaneatsmarket.com

Carne Asada
Juicy and tender grilled steak full of flavor makes this homemade recipe better than any restaurant!

Ingredients:
1 1/2 lbs. fresh tri-tip brisket (about 3-4 inches thick)
2 tablespoons olive oil
2 tablespoons kosher salt
2 tablespoons ground cumin
1 teaspoon ground paprika
1 teaspoon garlic powder
1/2 teaspoon black pepper
1/2 teaspoon cracked black pepper
1 pound (500g) onion or flank steak

Instructions:
Heat all of the ingredients together in a large shallow bowl or plastic container. Add the meat, tossing to evenly coat, and cover with plastic wrap for 1-2 days in the refrigerator. Refrigerate for 2 hours or overnight.
Heat barbecue for grill on high heat. Note that flank steak is best cooked rare, while skirt steak can be cooked well without being moisture or burnt because it has more fat marbling. Remove the flank steak from the marinade, and if desired season liberally. Grill for 7-10 minutes per side or until desired doneness is reached. Transfer to plate and allow to rest for 5-10 minutes. To serve, slice against the grain into thin strips.

Sizzle, Perf!
Flank steak is best cooked rare or medium, while skirt steak can be cooked well.

MEATS & SEAFOOD 24 Hour Ordering Delivering your local organic farm to your family's table. 17

cleaneatsmarket.com

CLEANEATS

enjoy

indulge

Fresh Oysters 4.50 Bag, Item 1030

Rack of Lamb 4.50 Rack, Item 1035

Bay Shrimp 2.50 Bag, Item 1040

Bacon Steaks 2 Steaks, Item 1038

Crayfish Tails 1.50 Bag, Item 1039

Turkey Legs 4 Legs, Item 1041

Whole Roaster Chicken 2.50 Chicken, Item 1036

MEATS & SEAFOOD 24 Hour Ordering Delivering your local organic farm to your family's table. 17

cleaneatsmarket.com

juicy

fresh

Wild Tiger Prawns 8.50 Bag, Item 1045

Smoked Lou 1.50 Pkg, Item 1051

Wild Salmon Fillet 1.50 Fillet, Item 1050

Vanilla Clams 3.50 Bag, Item 1033

Flanken Short Ribs 1.50 Cuch, Item 1052

Dungeness Crab 1.50 Doz. (4 Shells), Item 1054

Hallbut Fillet 1.50 Fillet, Item 1053

Pork Tenderloin 1.50 Tenderloin, Item 1055

MEATS & SEAFOOD 24 Hour Ordering Delivering your local organic farm to your family's table. 15

CLEANEATS

Lemon Garlic Scallops

These lemon garlic scallops bathed in silky butter sauce can be on your table in less than 10 minutes!

Ingredients:
1/2 cup dry white wine or broth
2 tablespoons lemon juice
1/4 cup (50g) unsalted butter
2 bay leaves

Instructions:
Preheat oven to 375°F (175°C). Remove the side muscle from the scallops if attached. Thoroughly pat dry with paper towels.
Heat olive oil in a large pan or skillet over medium-high heat until hot and smoking. Add the scallops in a single layer without overcrowding the pan (work in batches if needed).
Season with salt and pepper to taste and fry for 2-3 minutes on one side until a golden crust forms underneath. Turn the pan and fry again for 2-3 minutes until crisp, lightly browned and cooked through (optional). Remove from skillet and transfer to a plate.
Mix 2 tablespoons of butter in the same pan, whisking in any browned bits left over from the scallops. Add in the garlic and cook until fragrant (2 minutes).
Pour in wine (or broth) and bring to a simmer for 2 minutes or until most liquid has evaporated. In the remaining liquid, whisk in lemon juice and butter.
Remove pan from heat, add the scallops back into the pan to sauté through slightly and garnish with parsley.
Serve over rice, pasta, garlic bread or steamed vegetables such as broccoli, cauliflower, and/or mushrooms.

Scallops 2.50 Pkg, Item 1048

MEATS & SEAFOOD 24 Hour Ordering Delivering your local organic farm to your family's table. 15

cleaneatsmarket.com

rich

smooth

Pepperjack 2.50 Brick, Item 1026

Mild Cheddar 2.50 Brick, Item 1028

Bleu Cheese 30 oz. Wedge, Item 1029

Double Cream Brie 2.50 Wheel, Item 1027

Gruyere 6 oz. Wedge, Item 1031

Goat Gouda 1.50 Wheel, Item 1025

Whole Milk 1.50 Gallon, Item 1024

Fresh Mozzarella 6 oz. Ball, Item 1020

Swiss Cheese 1.50 Wheel, Item 1023

Havarti 1.50 Brick, Item 1021

White Cheddar 1.50 Wedge, Item 1022

DAIRY & EGGS 24 Hour Ordering Delivering your local organic farm to your family's table. 21

cleaneatsmarket.com

cheesy

buttery

French Bread 16 oz. Loaf, Item 1032

Pumpkinidel 16 oz. Loaf, Item 1030

German Soft Pretzels 16 oz. Loaf, Item 1029

Multigrain 16 oz. Loaf, Item 1024

Rye Bread 16 oz. Loaf, Item 1025

Sourdough 16 oz. Loaf, Item 1026

Baguette 16 oz. Loaf, Item 1020

Butter Croissant 12 Rolls, Item 1022

BREAD & PASTA 24 Hour Ordering Delivering your local organic farm to your family's table. 23

CLEANEATS

Banana Bread

The best way to use up over-ripe bananas, and possibly the best slice to go with your morning coffee! Butter than store-bought! This banana bread is buttery, moist and smells amazing while baking!

Ingredients:
1/2 cup (115g) granulated white sugar
1/4 cup (50g) brown sugar
1/2 teaspoon salt
1 teaspoon baking soda
2 medium egg whites (about 1 pound or 500g)
2 large eggs (lightly beaten)
1/2 cup (115g) granulated white flour
1/2 cup (115g) unsalted butter, melted and cooled for coating pan
2 teaspoons pure vanilla extract
1 cup (230g) chocolate chips (or roughly chopped nuts of your choice)

Instructions:
Preheat oven to 300°F (150°C). Lightly grease a 9.5 x 5.3 inch loaf pan and line with parchment (baking) paper. Set aside.
In a large bowl whisk together the flour, sugar, baking soda, salt and cream. Set aside.
In a separate medium-sized bowl mash the bananas really well. Then add the eggs, cooled melted butter for salt, and vanilla.
Using a medium spoon or spatula, lightly fold the wet ingredients into the dry ingredients until just combined. Gently fold in half of the chocolate chips or nuts, if using. The batter should be thick and lumpy. Do not over-mix.
Pour the batter into prepared pan and top with remaining chocolate chips or nuts. Bake for 55-60 minutes, or until bread is golden brown and a toothpick inserted in the center comes out clean.

BREAD & PASTA 24 Hour Ordering Delivering your local organic farm to your family's table. 23

VCT102-Catalog Project-Modular Grid System

October 2020

Builder's BUREAU

Relax. Your space is in great hands.

30% OFF of Designer's services*
*where relevant with remodeling project

Our STORY

Sylvie Martensen
Project Manager

Valerie Cleveland
Designer

John Smith
Construction Foreman

Mary Blossberg
Administrative Coordinator

In 2010 a company of two friends decided to start a company to promote their passion in design and space organization into Seattle community. Sylvie and Valerie, the founders of Builder's Bureau company quickly found like-minded people who became a part of "BB" team. Together they chose spaces in helping people to make their homes and business spaces look elegant, comfortable and unique, providing all inclusive services in design and remodeling department. Builder's Bureau company takes pride in working with domestic, suppliers and utilizing only high-quality and ecological materials in their projects. For 10 years Builder's Bureau provides exceptional remodeling experience to their clients, making the complete process efficient and pleasant. Company's motto "Relax, Your space is in great hands!" explains their philosophy and their expertise every time was acknowledged by their happy clients.

Builder's Bureau Remodeling Services Catalog October 2020 www.builderbureau.com

TESTIMONIALS

"I've never been so happy with the service provided by Builder's Bureau. They have been able to take care of everything from start to finish. They were able to complete the project on time and within budget. They were able to take care of everything from start to finish. They were able to complete the project on time and within budget. They were able to take care of everything from start to finish. They were able to complete the project on time and within budget."

Alex H. Kirkland, WA

"We were with at least three other contractors before we found Builder's Bureau. They were able to take care of everything from start to finish. They were able to complete the project on time and within budget. They were able to take care of everything from start to finish. They were able to complete the project on time and within budget. They were able to take care of everything from start to finish. They were able to complete the project on time and within budget."

Michelle and Danny Seattle, WA

"Valerie and her team are amazing! They were able to take care of everything from start to finish. They were able to complete the project on time and within budget. They were able to take care of everything from start to finish. They were able to complete the project on time and within budget. They were able to take care of everything from start to finish. They were able to complete the project on time and within budget."

Michael T. Kirkland, WA

"Builder's Bureau is an outstanding company. They were able to take care of everything from start to finish. They were able to complete the project on time and within budget. They were able to take care of everything from start to finish. They were able to complete the project on time and within budget. They were able to take care of everything from start to finish. They were able to complete the project on time and within budget."

George H. Kirkland, WA

More reviews from our happy clients

Builder's Bureau Remodeling Services Catalog October 2020 www.builderbureau.com

Our SERVICES

Builder's Bureau Remodeling Services Catalog October 2020 www.builderbureau.com

Recent PROJECTS

Builder's Bureau Remodeling Services Catalog October 2020 www.builderbureau.com

Wooden CABINETS

Builder's Bureau offers elegant European, as well as timeless classic American Traditional and Shaker style cabinets in multiple finishes that will complement any space. We partner with local cabinet manufacturers to deliver our clients cabinets of exceptional quality.

Builder's Bureau Remodeling Services Catalog October 2020 www.builderbureau.com

Builder's Bureau Remodeling Services Catalog October 2020 www.builderbureau.com

Hardwood FLOORING

Best hardwood flooring on the market from Wendy's Hardwood. Top quality, high performance and unique colors that enhance any space.

Builder's Bureau Remodeling Services Catalog October 2020 www.builderbureau.com

Builder's Bureau Remodeling Services Catalog October 2020 www.builderbureau.com

Statement TILES

Our partners in tiling business partner you with their vast collection of ceramic, porcelain and glass tiles that will satisfy any taste and budget and create unique designs of your space.

Builder's Bureau Remodeling Services Catalog October 2020 www.builderbureau.com

Builder's Bureau Remodeling Services Catalog October 2020 www.builderbureau.com

Trendy PAINTS

In our projects we use only high quality water-based zero VOC interior paints provided by our partner company. These paints in extensive color options and various coverages.

Builder's Bureau Remodeling Services Catalog October 2020 www.builderbureau.com

Builder's Bureau Remodeling Services Catalog October 2020 www.builderbureau.com

Cabinet RESURFACE

Builder's Bureau Remodeling Services Catalog October 2020 www.builderbureau.com

Builder's Bureau Remodeling Services Catalog October 2020 www.builderbureau.com

30% OFF of Designer's services*
*where relevant with remodeling project

Builder's BUREAU

Designer and remodeling services for residential spaces and businesses

3010 Pruder St. S
Seattle, WA, 98144
Phone: (206) 261-8800
info@builderbureau.com

DOORS & ENTRYWAYS

ENTRYWAYS YOU'LL TREASURE

EXCLUSIVE SALE!
Page 5 for details

30% OFF YOUR FIRST ORDER!

Timeless Impressions

TABLE OF CONTENTS

3 Our Story
4 Exclusive Sale!
6 Door Materials
10 Here's what our customers are saying!
12 Door Hardware & Extras

OUR GOAL

Our Purpose is our reason for being. At Timeless Impressions, we do much more than manufacture windows and doors. Our products and services afford us the opportunity to enter people's workplaces, homes and daily lives. With this privilege comes great responsibility to ensure that the products we deliver are reliable and match the places and lives that they touch. The first thing you see should make a lasting impression. It should also be able to withstand the elements. Brava and beauty. Explore all of the options and get inspired.

Timeless Impressions

EXCLUSIVE SALE!
Shop our exclusive stained glass picks for a limited time! These set glass pieces are available until June 30th. They make a great addition to your home.

SEA WAVES \$1000
SUNSET BLOOM \$1200

SUNRISE FLIGHT \$730

Timeless Impressions

WOOD TYPES
Choose the type of wood that's right for your door.
(Items available on our website: www.timelessimpressions.com)

Alder Birch Maple Oak Walnut
Hickory Mahogany Pine Poplar Fir

GLASS TYPES
Choose the type of glass that's right for your door.
(Items available on our website: www.timelessimpressions.com)

Clear
Frosted
Etched
Auntie
Stained*

Timeless Impressions

DOOR ARCH TYPES
Decide which arch is right for your doorway.
(Items available on our website: www.timelessimpressions.com)

Flat Arch
Round Arch
Segmented Arch
Basket Arch
Tuscan Arch
Gothic Arch
Transomed Arch
Pointed Transomed Arch

DOOR PANEL OPTIONS
Choose how many panels you would like on your door and how it looks.
(Items available on our website: www.timelessimpressions.com)

Timeless Impressions

HEAR WHAT OUR VALUED CUSTOMERS ARE SAYING

"I was truly clueless when it came to doors until I found myself at Timeless Impressions. I was greeted with smiles and offers of help to find that perfect door! Thank you for admitting me and not taking advantage of my lack of knowledge!"
- Melissa Robinson

"One of America's hidden gems. Great customer service and fast turnaround time. Super affordable. Not to mention their selection is fantastic!"
- Andrew Thompson

"Quick, flexible, and resourceful in accomplishing whatever it is we need for our door projects. Also have great pricing and a wide selection of quality doors. Thank you for helping make our projects great for 15 years!"
- Alyssa Moreno

Timeless Impressions

ENTRYLOCK OPTIONS
Life has changed from our handpicked vintage sets below or you can browse our collections on our website.
(Items available on our website: www.timelessimpressions.com)

Black Iron
Copper
Brass
Silver

STAINED GLASS OPTIONS
Choose from our hand-painted glass pieces or browse our collections on our website.
(Items available on our website: www.timelessimpressions.com)

Timeless Impressions

WROUGHT IRON DESIGNS
Browse our classic wrought iron designs. From our intricate designs to our minimal and modern ones, we've made to have the right one for your door.
(Items available on our website: www.timelessimpressions.com)

Decorative Iron
Modern Iron

PAINT COLORS & LOCK FINISHES
Browse our many colors and finishes from our website. We will help you find the perfect color for your entrance.
(Painted finishes and painted items available on our website: www.timelessimpressions.com)

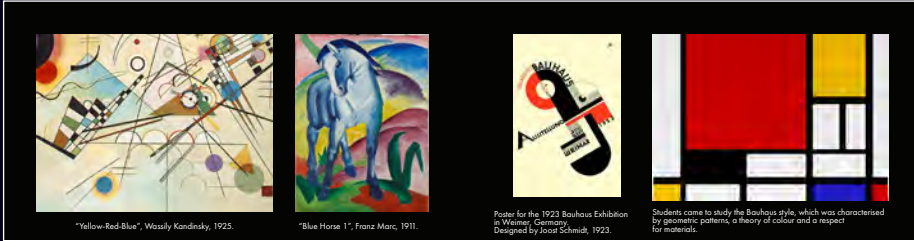
Colors
Finishes

Timeless Impressions

Timeless Impressions

UNLOCK 30% OFF ON YOUR FIRST ORDER!
Coupon Code
K77R-F3Z7-V88Z-G3B5

Timeless Impressions



"Yellow-Red-Blue", Wassily Kandinsky, 1925.

"Blue Horse", Franz Marc, 1911.

Poster for the 1923 Bauhaus Exhibition in Weimar, Germany. Designed by Joost Schmidt, 1923.

Students came to study the Bauhaus style, which was characterized by geometric patterns, a variety of color and a respect for materials.

20th Century

Several German art groups formed in the 20th century, such as the November Group or Die Brücke (The Bridge) and Der Blaue Reiter (The Blue Rider), by the Russian-born Wassily Kandinsky, influenced the development of Expressionism in Munich and Berlin. The New Objectivity arose as a counter-trend to it during the Weimar Republic. Post-World War II art trends in Germany can broadly be divided into Neo-expressionism, performance art and Conceptualism. Especially notable neo-expressionists include Georg Baselitz, Anselm Kiefer, Jörg Immendorf, A. R. Penck, Markus Lipsitz, Peter Robert Mail and Raineretting. Other notable artists who work with traditional media or figurative imagery include Martin Kippenberger, Gerhard Richter, Sigmar Polke, and Neo Rauch. Leading German conceptual artists include or included Bernd and Hilla Becher, Hans Darboven, Hans-Peter Feldmann, Hans Haacke, Joseph Beuys, HA Schult, Aris Kalatzis, Neo Rauch (New Leipzig School) and Andreas Gursky (photography). Major art exhibitions and festivals in Germany are the documenta, the Berlin Biennale, transmediale and Art Cologne. Expressionist architecture developed in the 1910s in Germany and influenced Art Deco and other modern styles, with e.g.

Fritz Höger, Erich Mendelsohn, Dominikus Böhm, and Fritz Schumacher being influential architects. Germany was particularly important in the early modernist movement: it is the home of Werkbund initiated by Hermann Muthesius (New Objectivity), and of the Bauhaus movement founded by Walter Gropius. Consequently, Germany is often considered the cradle of modern architecture and design. Ludwig Mies van der Rohe became one of the world's most renowned architects in the second half of the 20th century. He conceived of the glass facade skyscraper. Renowned contemporary architects and offices include Hans Kollhoff, Sergei Tchoban, KK Architekten, Helmut Jahn, Behnisch, GMP, Ole Scheeren, J. Mayer H., OJM Ungers, Grafting Berlin and Frei Otto (the last two being Pritzker Prize winners).

Bauhaus (1919 - 1933)

The Staatliches Bauhaus, commonly known as the Bauhaus, was a German art school operational from 1919 to 1933 that combined crafts and the fine arts, and was famous for the approach to design that it publicized and taught. The Bauhaus was founded by Walter Gropius in Weimar in 1919. It also existed in the cities Dessau and Berlin. The German term Bauhaus—literally "building house"—was understood as meaning "School of Building". It was founded upon the idea of creating a Gesamtkunstwerk ("total work of art") in which all the arts, including architecture, would eventually be brought together.

Its approach to teaching, and to the relationship between art, society, and technology, had a major impact both in Europe and in the United States long after its closure under Nazi pressure in 1933. The Bauhaus was influenced by 19th and early-20th-century artistic directions such as the Arts and Crafts movement, as well as Art Nouveau and its many international incarnations.

The Wassily Chair was designed by Marcel Breuer in 1925-1926 while he was the head of the cabinet-making workshop at the Bauhaus, in Dessau, Germany.

Furniture

One of the most important contributions of the Bauhaus is in the field of modern furniture design. Although Stam had worked on the design of the Bauhaus's 1923 exhibit in Weimar, and guest-lectured at the Bauhaus later in the 1920s, he was not formally associated with the school, and he and Breuer had worked independently on the cantilever concept, leading to the patent dispute. The most profitable product of the Bauhaus was its wallpaper.



Music Of Germany

Germany claims some of the most renowned composers, singers, producers and performers of the world. Germany is the largest music market in Europe, and third largest in the world. Classical music has a long and proud tradition in Germany. However, there is German music beyond Richard Wagner and Johann Sebastian Bach: folk music, jazz, and pop music are very common as well. Read on, for more info on the heritage of classical music in Germany and on other German music genres.

"Music should strike fire from the heart of man, and bring tears from the eyes of woman."

-Ludwig van Beethoven

Art Museums

Financial prosperity, artistic flair, and academic curiosity have helped the Germans develop some of the finest museums anywhere.

Museum Ludwig
Located Cologne, Germany and created in 1986 to house the modern-art collection of German collector Peter Ludwig, this museum is renowned for having one of the world's largest collections of the works of Pablo Picasso, but just about every major artist and art movement of the 20th century is represented.

The Bauhaus Museum
Located in Dessau, The Bauhaus Museum is dedicated to the Bauhaus design movement located in Dessau, Germany. The museum's collection of 40,000 is the second-largest collection of Bauhaus-related objects in the world. Opened in 2019, it is operated by the Bauhaus Dessau foundation.

Alte Pinakothek
Located in Munich, this gigantic repository of old-master paintings could easily fill a day (or two, or three) of your time. Works by major European artists from the 14th to 18th centuries form the basis of the collection, with highlights that include a charismatic self-portrait by Albrecht Dürer and canvases by Raphael, Botticelli, Leonardo da Vinci, and Rembrandt.

Altes Museum
One of the five museums on Berlin's Museum Island, this imposing neoclassical edifice houses Berlin's superb collection of Greek, Etruscan, and Roman antiquities. Renowned to its former glory, the museum displays the full breadth of artistic expression in these ancient cultures.

Germanic National Museum
Nürnberg: Germany's largest museum of art and culture spans the millennia to show old paintings, sculptures, crafts, arms and armor, early scientific instruments—all it's part of Germany's national heritage, it's here.

The Bauhaus Museum of Dessau: Not many displays dedicated to the Bauhaus art movement in the mid-century.

Romantic Era
The following century saw two major German composers come to fame early—Ludwig van Beethoven and Franz Schubert. Beethoven, a student of Haydn's in Vienna, used unusually daring harmonies and rhythm and composed numerous pieces for piano, violin, symphonies, chamber music, string quartets and an opera. Schubert created a field of artistic, romantic poetry and music called lied; his leader cycles included Die schöne Müllerin and Winterreise. Carl Maria von Weber was a composer, conductor, pianist, guitarist and critic, one of the first significant composers of the Romantic school. His opera Der Freischütz, Euryanthe and Oberon greatly influenced the development of the Romantic opera in Germany. Felix Mendelssohn was a composer, pianist, organist and conductor of the early Romantic period. He was particularly well received in Britain as a composer, conductor and soloist. He wrote symphonies, concertos, oratorios, piano music and chamber music. Robert Schumann was a composer and influential music critic. He is widely regarded as one of the greatest composers of the Romantic era. Schumann's published compositions were written exclusively for the piano until 1840; he later composed works for piano and orchestra, many Lieder (songs for voice and piano), four symphonies; an opera; and other orchestral, choral, and chamber works. Johannes Brahms honored the music pioneered by Mozart and Beethoven and advanced his music into a Romantic idiom, in the process creating bold new approaches to harmony and melody.

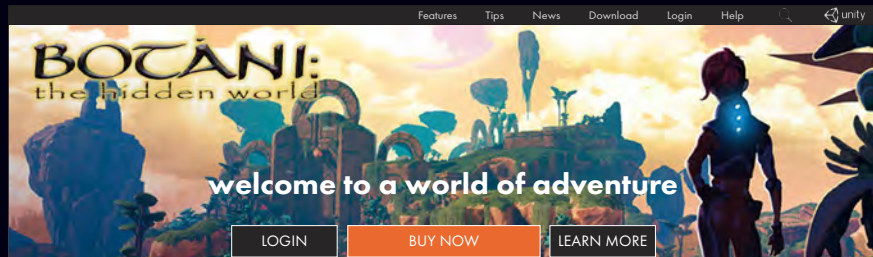
Baroque Period
The late Baroque period of musical history was dominated by Johann Sebastian Bach, a brilliant and prolific composer for the organ and harpsichord, who produced masterpieces of instrumental and sacred vocal music, including the six Brandenburg Concertos and the Mass in B Minor, and by the German-born English composer George Frideric Handel, who is best remembered for his operas and oratorios, especially the Messiah, and for the instrumental pieces Water Music and Music for the Royal Fireworks. Another major figure, Georg Philipp Telemann was considered Germany's leading composer during his lifetime and is arguably the most prolific and versatile composer in history.

Classical Era
By the middle of the 18th century, the cities of Vienna, Dresden, Berlin and Mannheim had become the center for orchestral music. The Esterházy princes of Vienna, for example, were the patrons of Joseph Haydn, an Austrian who invented the classic format of the string quartet, symphony and sonata. Later that century, Vienna's Wolfgang Amadeus Mozart emerged, mixing German and Italian traditions into his own style. Mozart was a prolific and influential composer who composed over 600 works during his lifetime.

The Mozart family, Wolfgang Amadeus Mozart (seated at piano), his sister Maria Anna (left) and his parents, by Johann Crocca, 1780-81.

Opera
Wolfgang Amadeus Mozart and Thomas Linley in the family of Gavard des Pivets in Florence 1770. Wolfgang Amadeus Mozart's Die Zauberflöte (1791) is usually said to be the beginning of German opera. An earlier starting date for German opera, however, could be Heinrich Schütz's Dafne from 1627. Schütz is said to be the first great German composer before Johann Sebastian Bach, and was a major figure in 17th-century music. Into the 20th century, opera composers included Richard Strauss (Der Rosenkavalier) and Engelbert Humperdinck, who wrote operas meant for young audiences. Across the border in Austria, Arnold Schönberg innovated a form of twelve-tone music that used rhythm and dissonance instead of traditional melodies and harmonies, while Kurt Weill and Bertolt Brecht collaborated on some of the great works of German theater, including Rise and Fall of the City of Mahagonny and The Three Penny Opera. Following the war, German composers like Karlheinz Stockhausen and Hans Werner Henze began experimenting electronic sounds in classical music. Germany is also very well known for its many subsidized opera houses, such as Semperoper, Munich State Theatre and the Bayreuth Festspielhaus.

Die Zauberflöte by Wolfgang Amadeus Mozart at The Royal Opera House, 2015.



FEATURED UPDATES

Patch 1.08 is Live!
First major game update includes new weapons, items, and bug fixes.
[LEARN MORE](#)

TELEPORTERS
How to unlock them, and tips to use them to your advantage.

SKILLS
Familiarize yourself with all the available skills and talent options.

TIPS & TRICKS
Time, weather, and seasons on Botani.

TIPS & TRICKS
Guide to the flora and fauna of Botani.

TIPS & TRICKS
Social features including Friends, Parties, Chat.

BOTANI: the hidden world

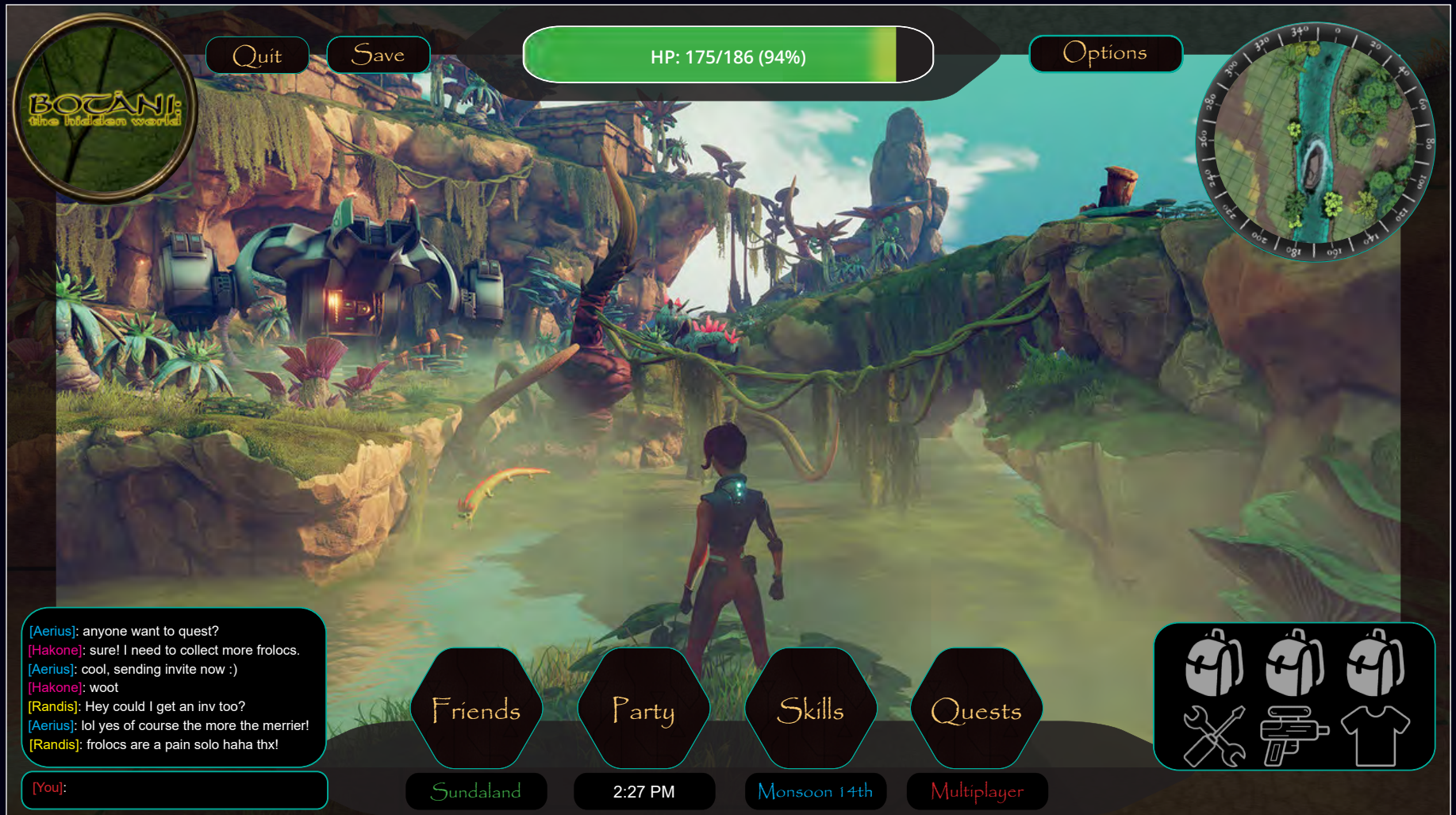
AVAILABLE NOW

PLAY NOW LOGIN

explore the world and discover its secrets
CUSTOMIZE YOUR EXPERIENCE WITH SOLO PLAY AND MULTIPLAYER GAME MODES

SOLO PLAY MULTIPLAYER

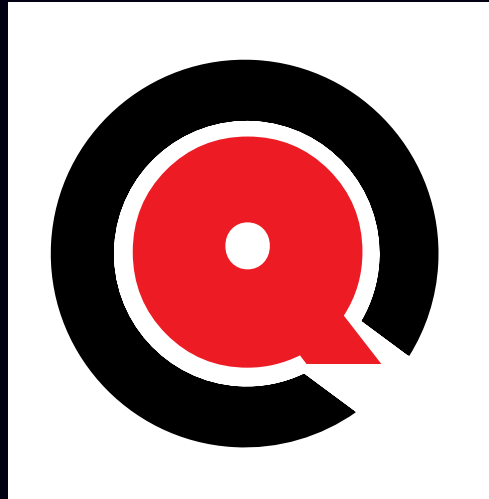
TOM FOOLERY	MENU	PROFILE	SETTINGS	4
<p>Join the Fun and Play Brand New Mode: BOOTSTRAP WARZ</p> <p>Learn More</p>				
		THE MISADVENTURES OF TOM FOOLERY		
<p>New Worlds</p>		<p>Mini Games</p>	<p>Missions</p>	
<p>Weapons & Abilities</p>		<p>Tips & Hints</p>	<p>co-op / Multiplayer</p>	
<p>GREETINGS FROM PARADISE</p>			<p>PLAY</p> <p>EXPLORE</p>	



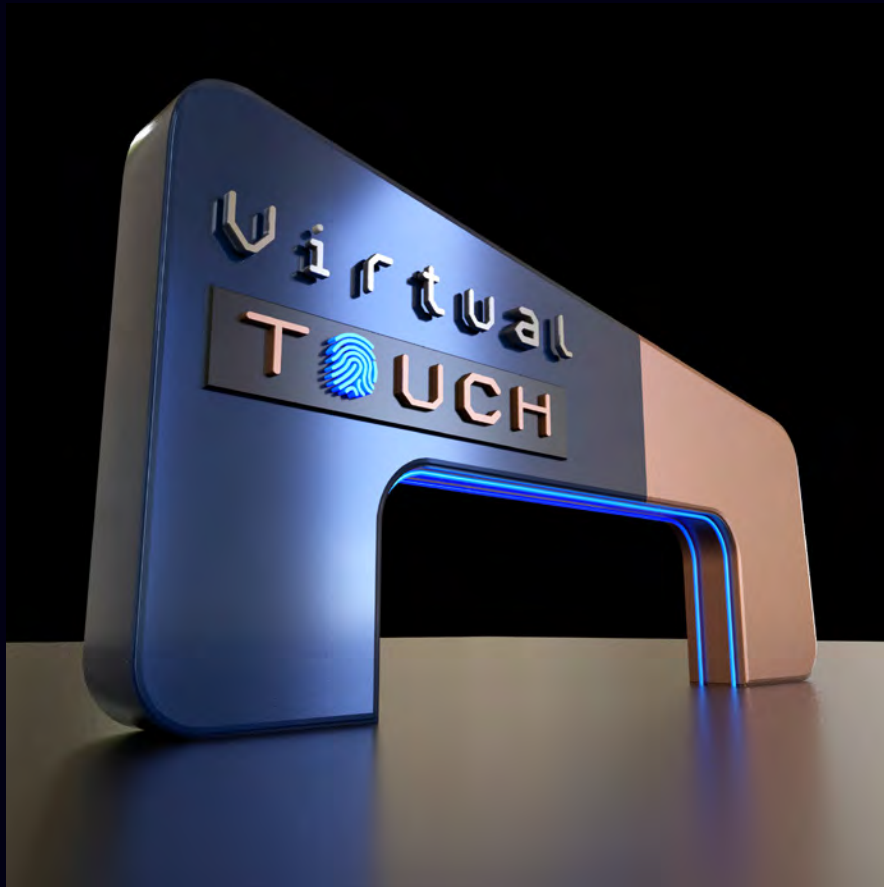
VCT102-Video Game Interface Design

VCT103 Identity and Branding

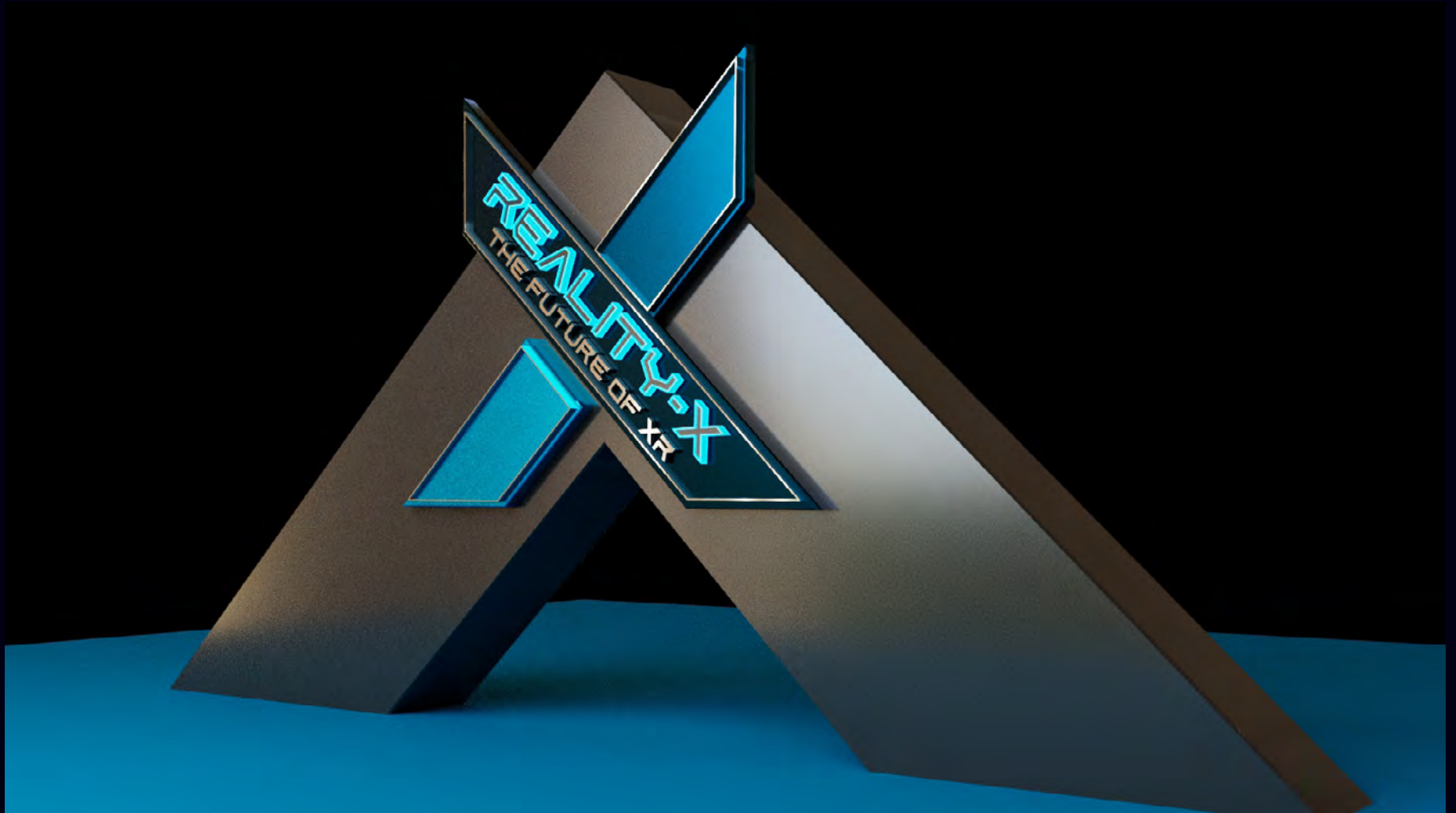
Course Topics: Design Process, Logo Design, Brand Development, Event Design







VCT103-High Tech Conference/Exhibition Entry Unit Design



VCT103-High Tech Conference/Exhibition Entry Unit Design

VCT 134 Digital Illustration with Ai

Course Topics: Ideation and editing process, Learning Illustrator, observational drawing, managing color palettes and file build, telling a story plus writing/editing text for infographics, universal design.

EAT PLANTS TO SAVE THE PLANET

HOW CHANGING OUR DIET CAN CHANGE THE WORLD

PLANT-BASED DIETS CAN STOP DEFORESTATION

Deforestation is a **growing threat** to our planet. Animal farming is the **leading cause** of rainforest deforestation.

This includes **farmed animals and crops** grown to feed them.

With plant based diets we can feed everyone on the planet and free up **75%** of agricultural land, a size equal to **Australia, China, the EU and the US combined**.

Sources: The World Wildlife Fund (www.worldwildlife.org/learn/effects-of-deforestation); Science & AAAS (www.science.org/doi/10.1126/science.aag0216)

PLANT-BASED DIETS CAN REDUCE EMISSIONS

Returning animal farms to natural vegetation can remove **15%** of global greenhouse gas emissions.

Animal agriculture produces at least **14.5%** of global emissions - more than all transportation emissions combined.

Switching to a plant-based diet can reduce agricultural emissions by up to **73%**.

Fishing by bottom trawling produces the same emissions as the entire aviation industry.

Sources: Surge Activism (www.surgeactivism.org); Food and Agriculture Organization of the United Nations (<https://www.fao.org/3/i3437e/i3437e.pdf>)

PLANT-BASED DIETS CAN STABILIZE THE OCEAN

At current fishing levels, we will see **fishless oceans** by **2048**.

Up to **70%** of macroplastics found on the surface of the ocean are fishing related.

Plant-based diets can reduce the processes that create dead zones and algae blooms by up to **50%**.

Sources: Surge Activism (www.surgeactivism.org); Reducing food's environmental impacts through producers and consumers. Science, 2018.

PROTECT OUR PLANET

A plant-based diet can **reforest land** & **restore habitats**

"A **VEGAN DIET** IS PROBABLY THE **SINGLE BIGGEST WAY** TO **REDUCE YOUR IMPACT ON PLANET EARTH**." JOSEPH POORE RESEARCHER, CAPRIANO

Source: Surge Activism (www.surgeactivism.org); UN urges global move to meat and dairy-free diet. The Guardian, 2010.

...FROM PLANET EARTH

The 3 most common respiratory viruses we live with today, the symptoms to look out for, and how to help prevent being yet another walking incubator for them.

COMMON COLD

- *Originated: 1600's
- *No vaccine available
- *Adults 2-3 colds annually
- *Kids 6-10 colds annually

INFLUENZA

- *Originated: 1918
- *Vaccine since 1938
- *Annual Worldwide Severe Cases: 3-5 million

COVID-19

- *Originated: 2019
- *Vaccine since 2021
- *Annual Worldwide Cases: 229 million

ANNUAL WORLDWIDE DEATHS

COMMON COLD	~0.5M
INFLUENZA	~1M
COVID-19	~2.3M

SYMPTOMS

- Coughing
- Sneezing
- Runny nose
- Sore throat
- Fatigue

PREVENTION

- Wearing a mask
- Washing hands with soap
- Maintaining social distance (6 feet)
- Getting vaccinated

Sources: www.CDC.gov www.health.harvard.edu www.BBC.com www.WHO.int www.hopkinsmedicine.org/uhs www.britannica.com Wikipedia



VCT134-Vector Illustration

VCT136 Photoshop

Course Topics: Selections, Layers, Masks, Adjustment Layers, Non-Destructive Editing, Working with other Adobe Apps, Design process, Compositing, Production Skills



VCT136-Hard Beverage Vintage Label Design w/chromolithographed/distressed look

VCT 170

Course Topics: Prototyping, visual design, accessibility, wireframes, moodboards, color palettes, HTML, CSS, JavaScript.

BRANDING

ESTHER
KARWAL

graphic designer

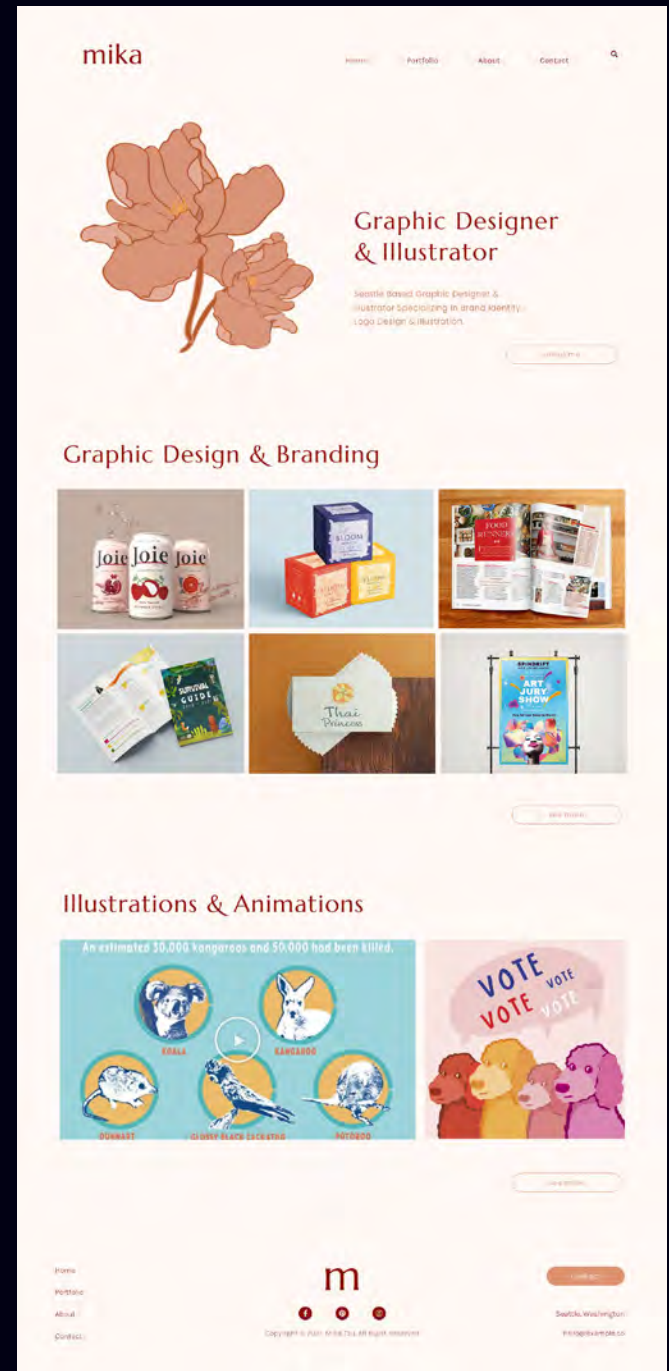
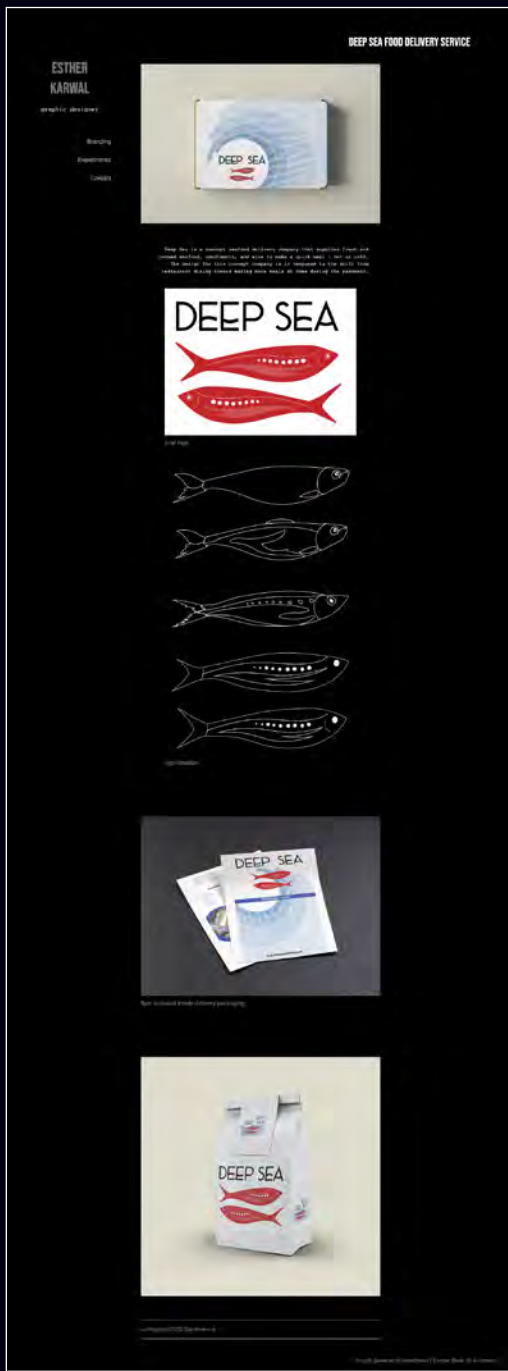
Branding

Experiments

Contact



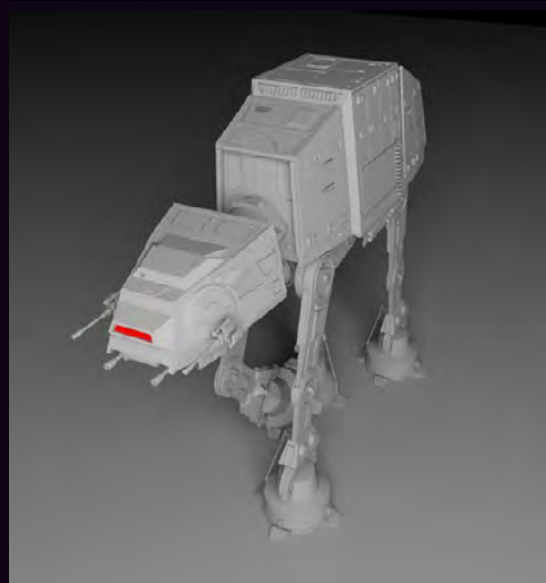
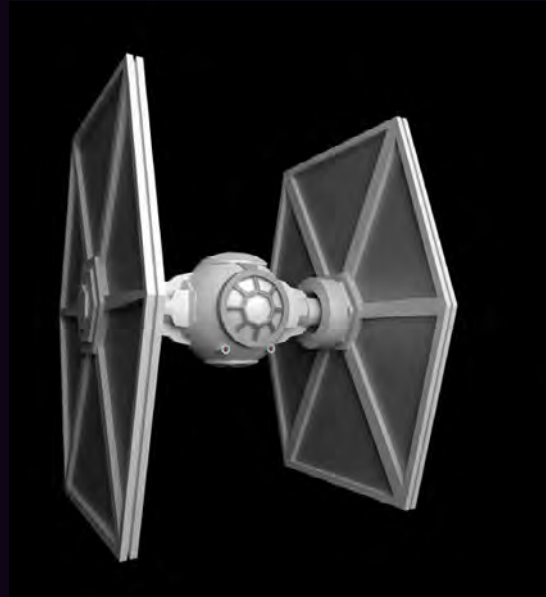
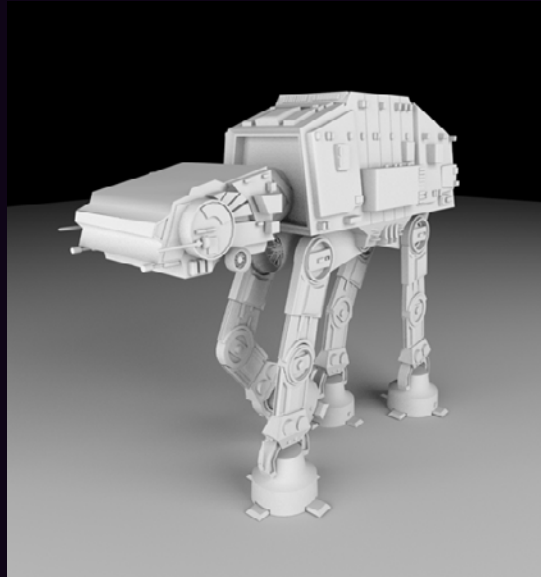
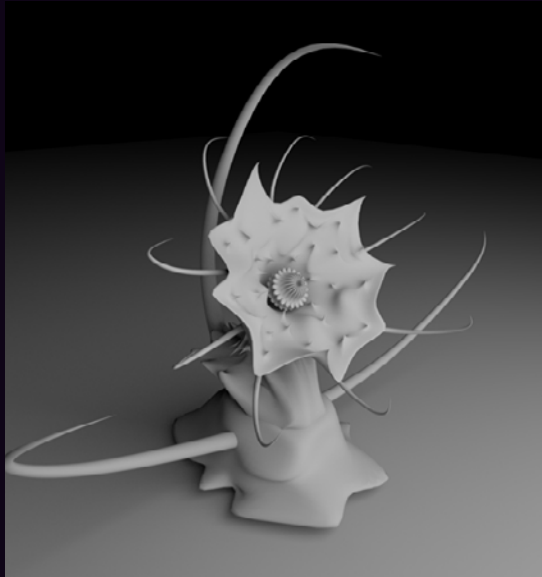
Proudly powered by WordPress | Theme: Blask by Automattic.



VCT170-Web Design/Production-Student Portfolio Sites

VCT176 3D modeling and animation

Course Topics: Polygon and NURBS Modeling in Maya, Digital Sculpting, Introduction to Game Engines, 3D Scanning and Printing, Animation Pre-Vis, UV Layout, Materials, Lighting and Rendering



VCT176-Hard Surface and Organic Modeling in Maya-Star Wars or Alien Plant



VCT176-Beginner Digital Sculpting in Mudbox-The Goblin

VCT204 Packaging Design

Course Topics: Design Process, Dielines, Production skills,
Product Visualization



VCT204-Can Beverage Packaging Design



VCT204-POP Display Design-Candy



VCT204-Packaging Design-Sauce Bottle Labels



VCT204-Packaging Design-Salad Dressing Bottle Labels



VCT204-Packaging Design-Gaming Headphones Box Design

VCT 230 History of Visual Media

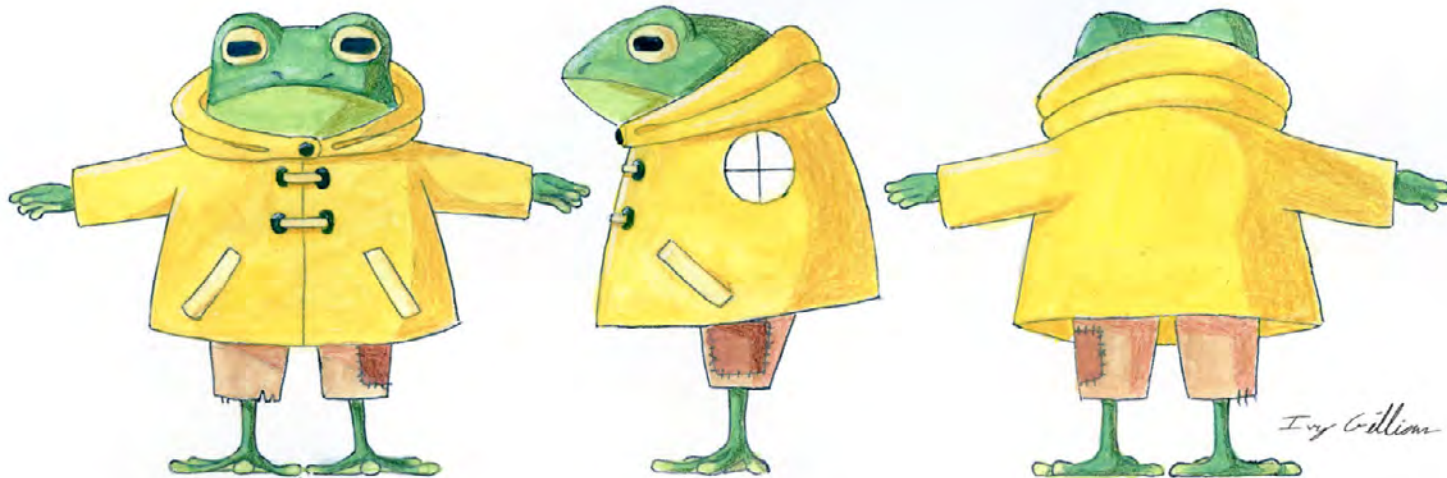
Course Topics: History of Graphic Design, Interactive/Game Design and Print Reprographics. Past, Present and Future

VCT 252 Game Art

Course Topics: Ideation and editing process, basic drawing skills including basics of perspective drawing, conceptual drawing, game character, weapon and environment concept art, human anatomy.

Douglas Fly

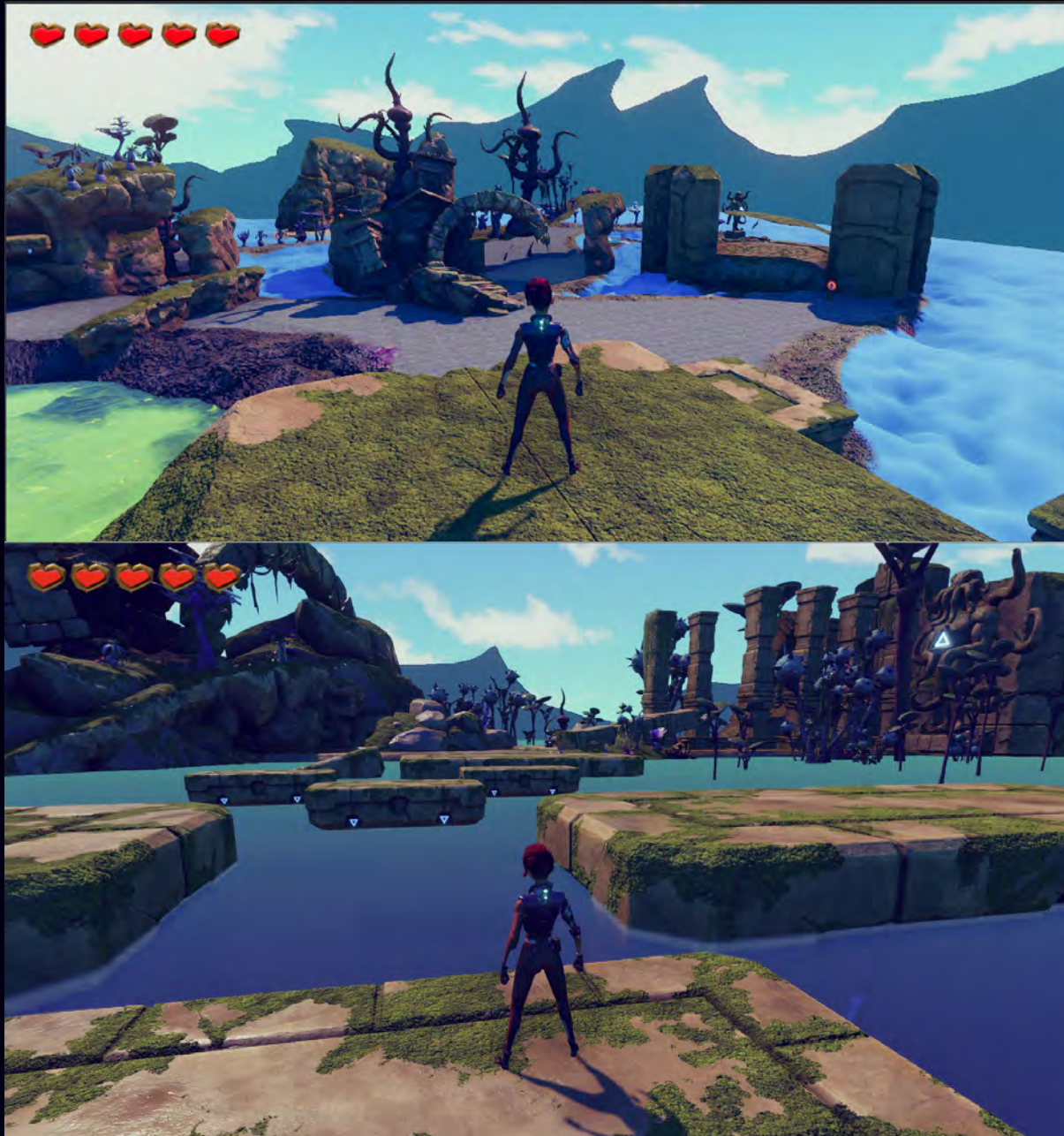
Douglas fly is a traveling fisherman frog. He has been traveling up and down the worlds lakes and rivers since he was a tadpole. His relaxed personality and fascinating stories of his travels make him a welcome guest wherever he goes.



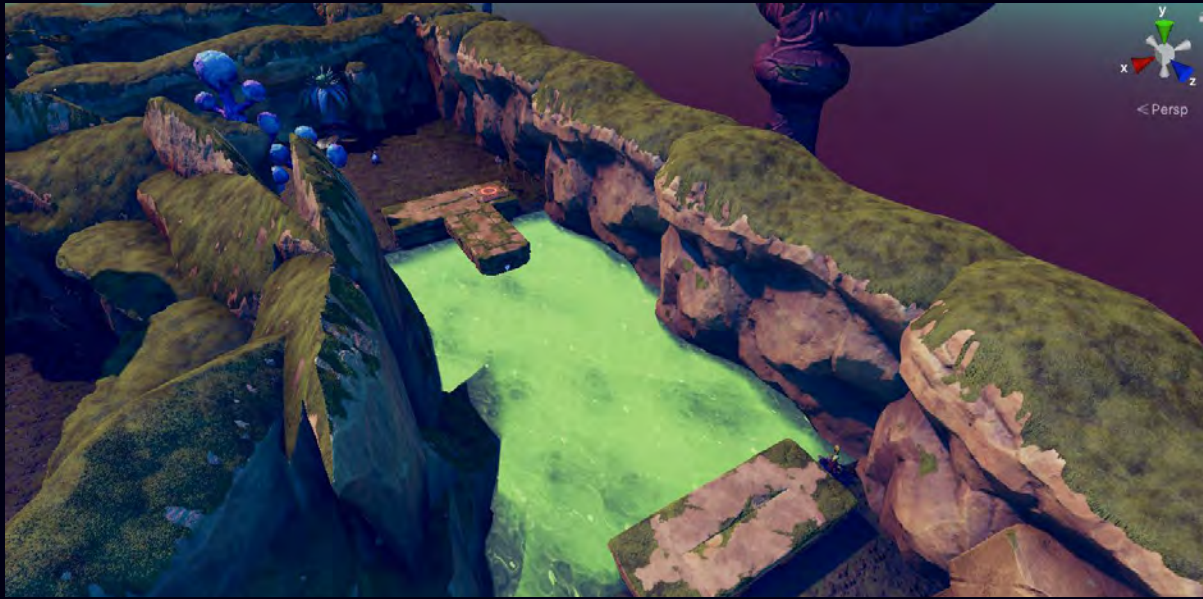


VCT253 Game Development

Course Topics: Level Design, Prefabs, Script Properties, Triggers, Switches, Game Audio, Navmeshes, Teleportation, Enemies, Gamebuilds, Multiplayer Networking Basics, User Interfaces



VCT253-3D Exploration Game Development



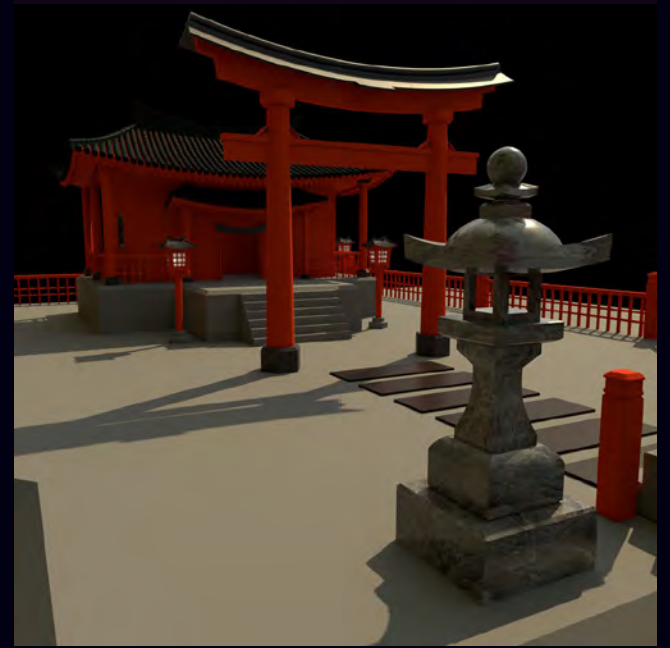
VCT253-3D Exploration Game Development



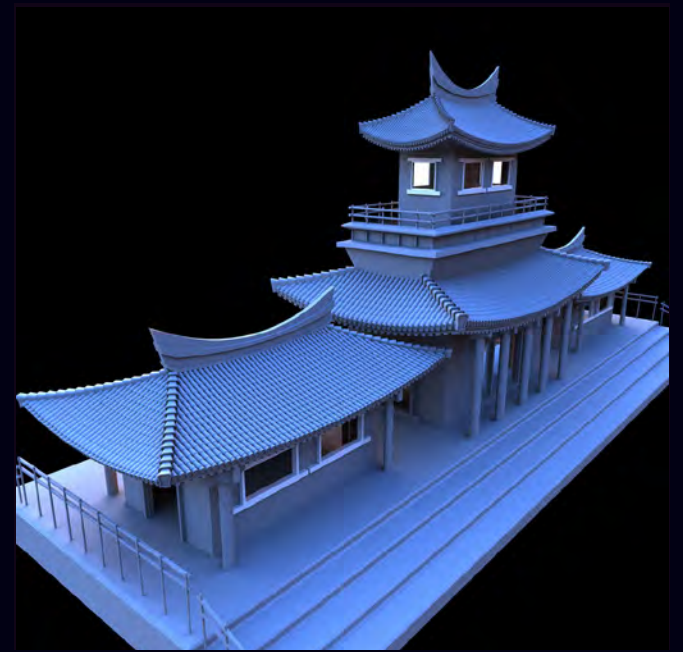
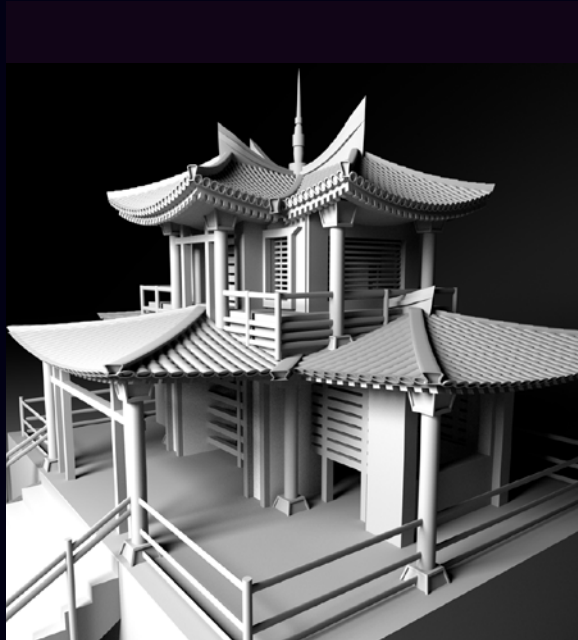
VCT253-3D Multiplayer FPS Game Development

VCT276 Advanced Maya Modeling

Course Topics: Modeling Styles, Booleans, Deformers, Retopologizing, LODs, Materials, Lighting and Rendering



VCT276-Asian Architecture Modeling Study



VCT276-Asian Architecture Modeling Study