

ORGANIZATIONAL CHART

FEBRUARY 2025





1. Office of the President

1A International Education & Global Engagement

2. Instruction

2A Business, Communication & Social Sciences

2B1 Humanities

2B2 Transitional Studies

2B3 Workforce

2C1 Science, Technology, Engineering & Mathematics

2C2 Career Technical Education

2D Nursing

2E Learning Resources

3. Student Services

3A Access & Advising

3B Student Support Services

4. Business & Administrative Services

4A Facilities

4B Budget & Financial Services

4C Parent Child Center

4D Technology Support Services

5. Human Resources

5A Safety & Security

6. Diversity, Equity, Inclusion & Accessibility

7. Communications & Marketing



OFFICE of the PRESIDENT

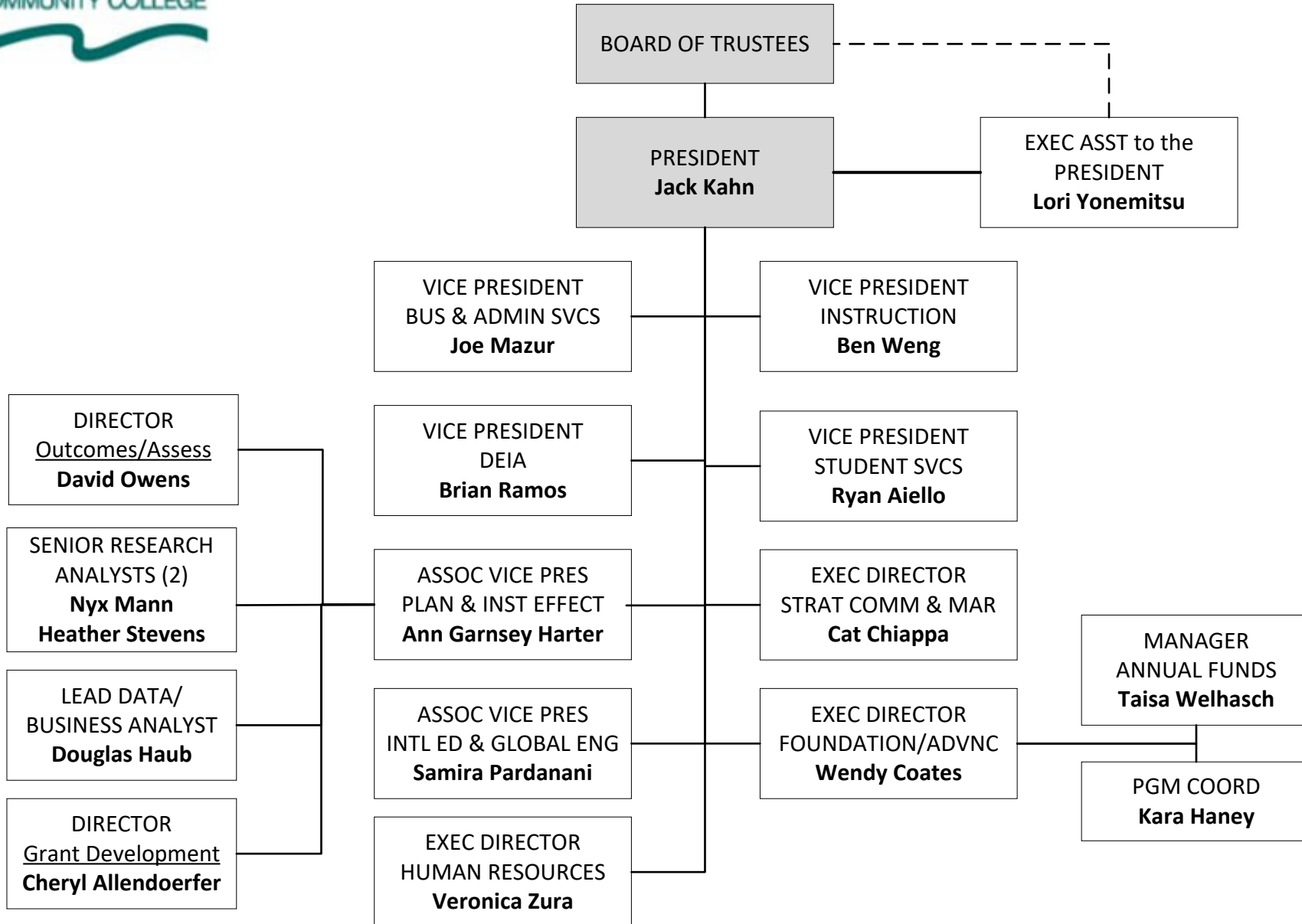
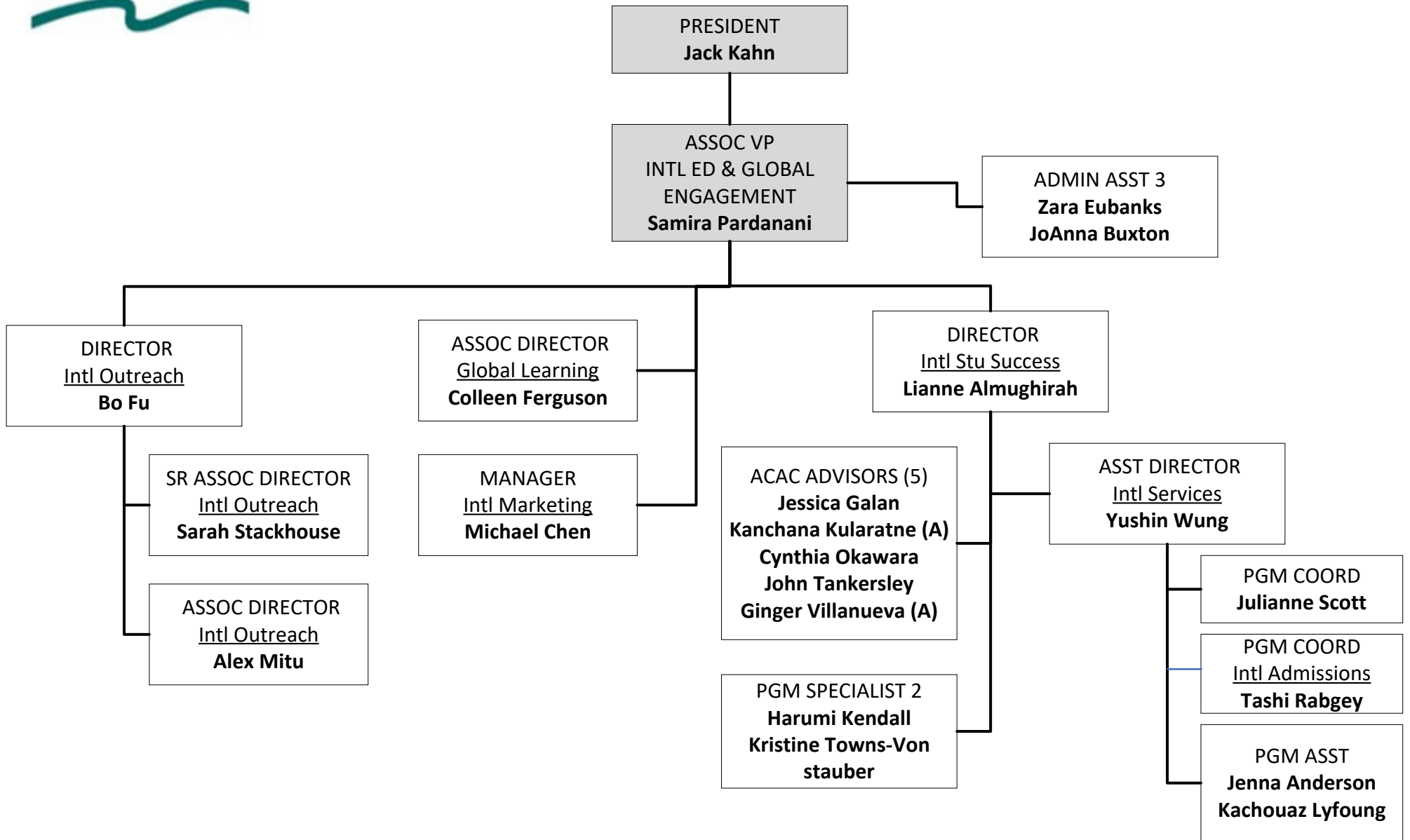


Chart 1
PRESIDENT
Feb 2025



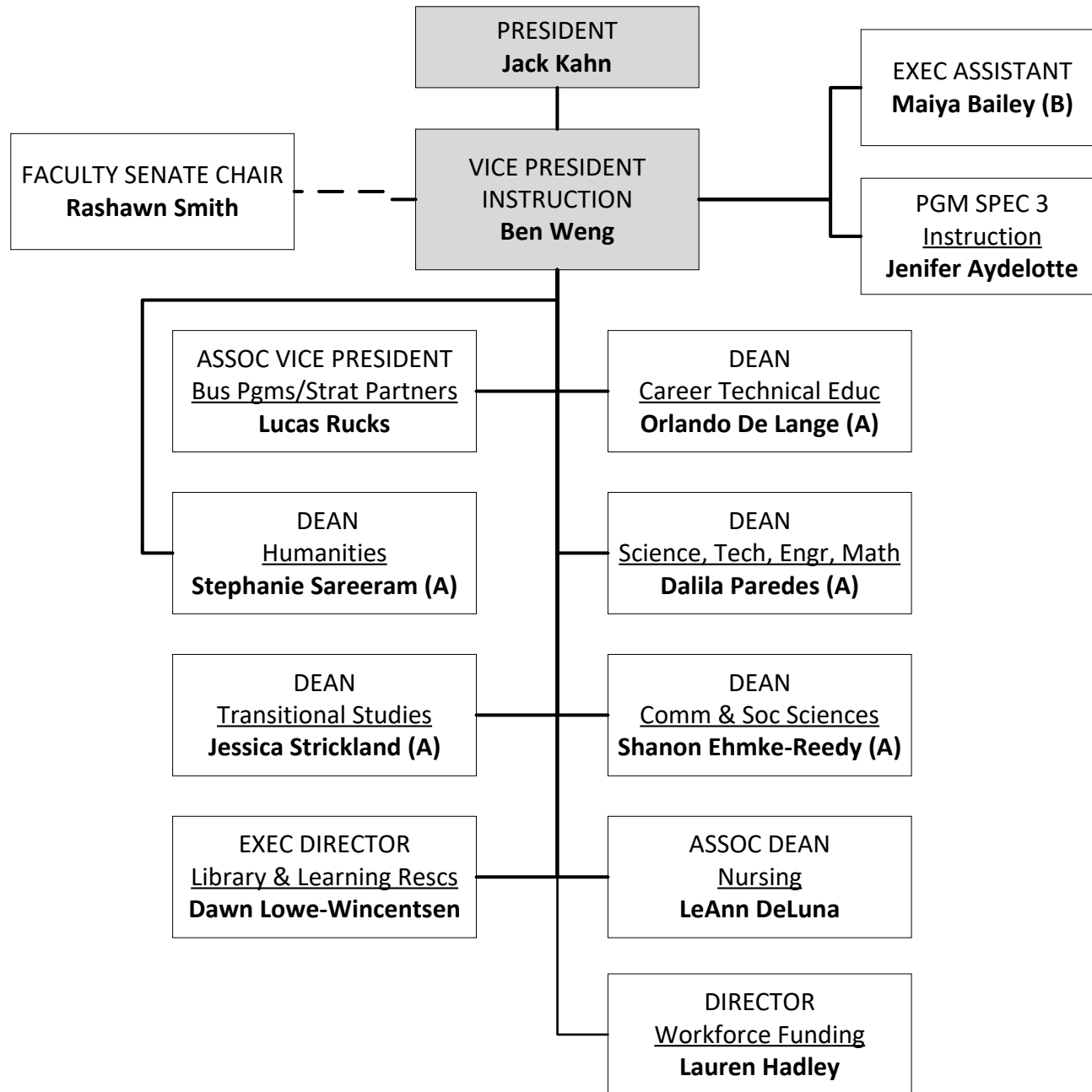
OFFICE of INTERNATIONAL EDUCATION & GLOBAL ENGAGEMENT



(A) FT Annual Faculty



OFFICE of INSTRUCTION

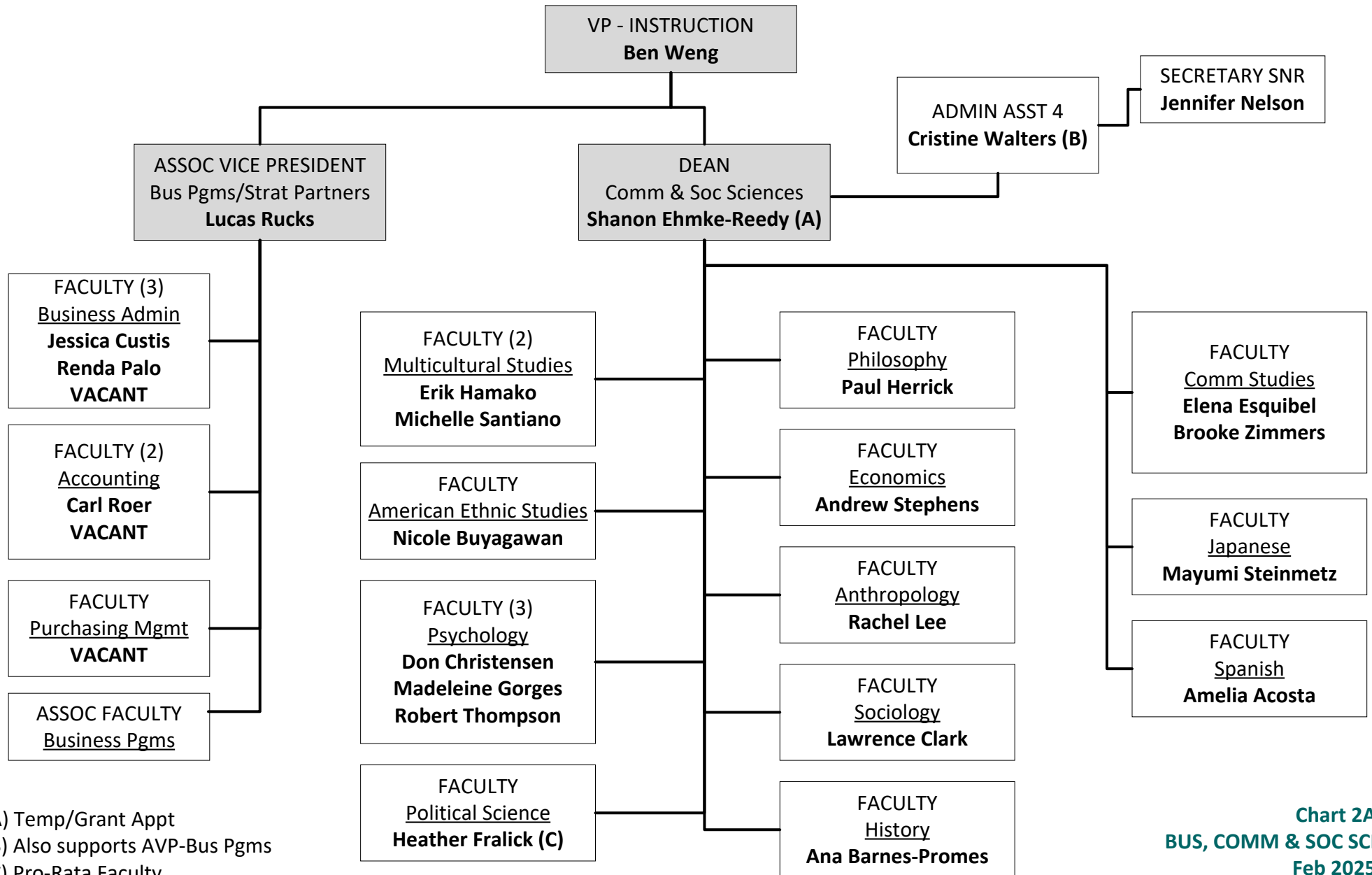


(A) Temp Appt

(B) Also supports VP-Students



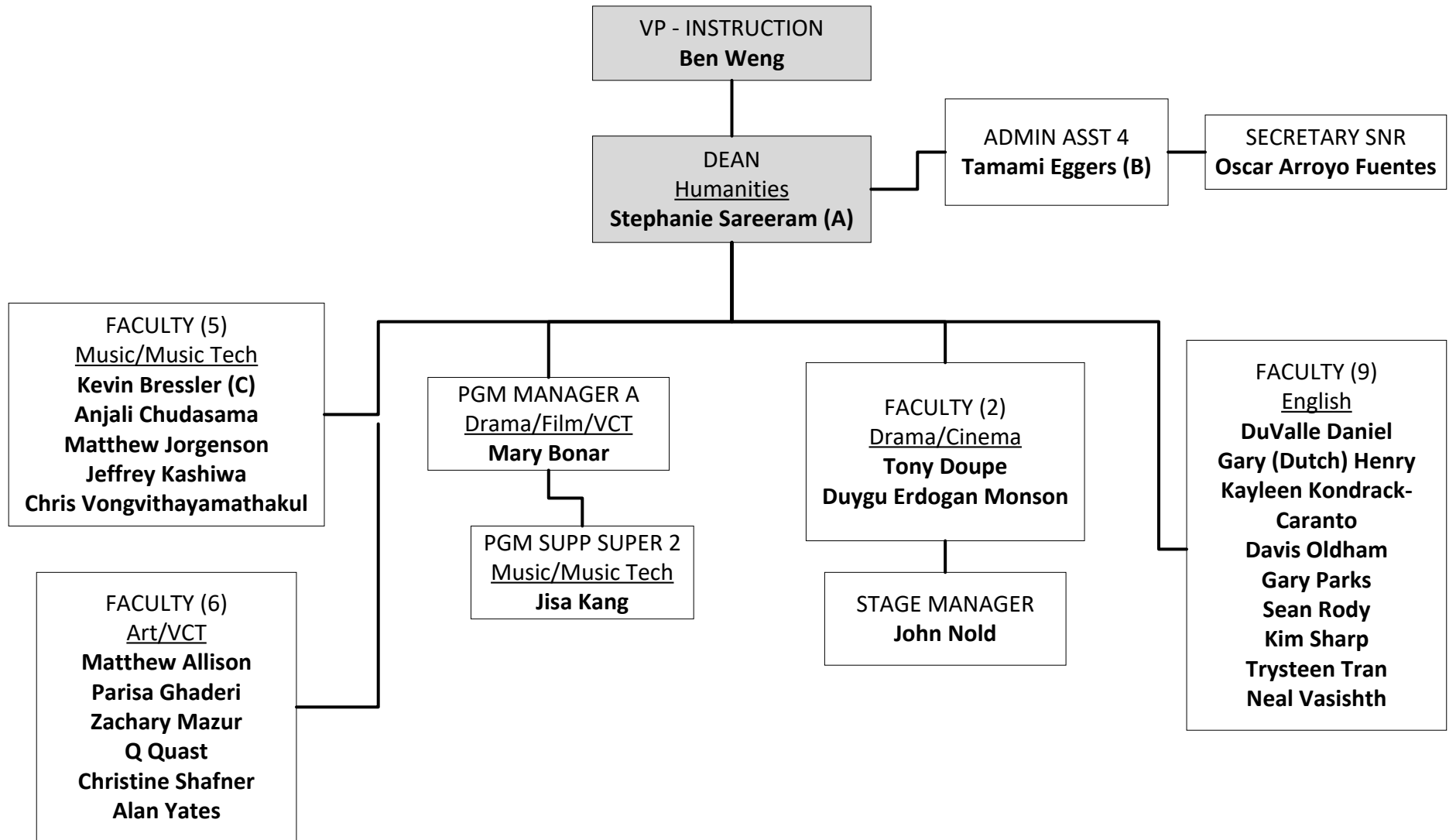
OFFICE of INSTRUCTION
Business, Communication & Social Sciences



(A) Temp/Grant Appt
 (B) Also supports AVP-Bus Pgms
 (C) Pro-Rata Faculty



OFFICE of INSTRUCTION
Humanities

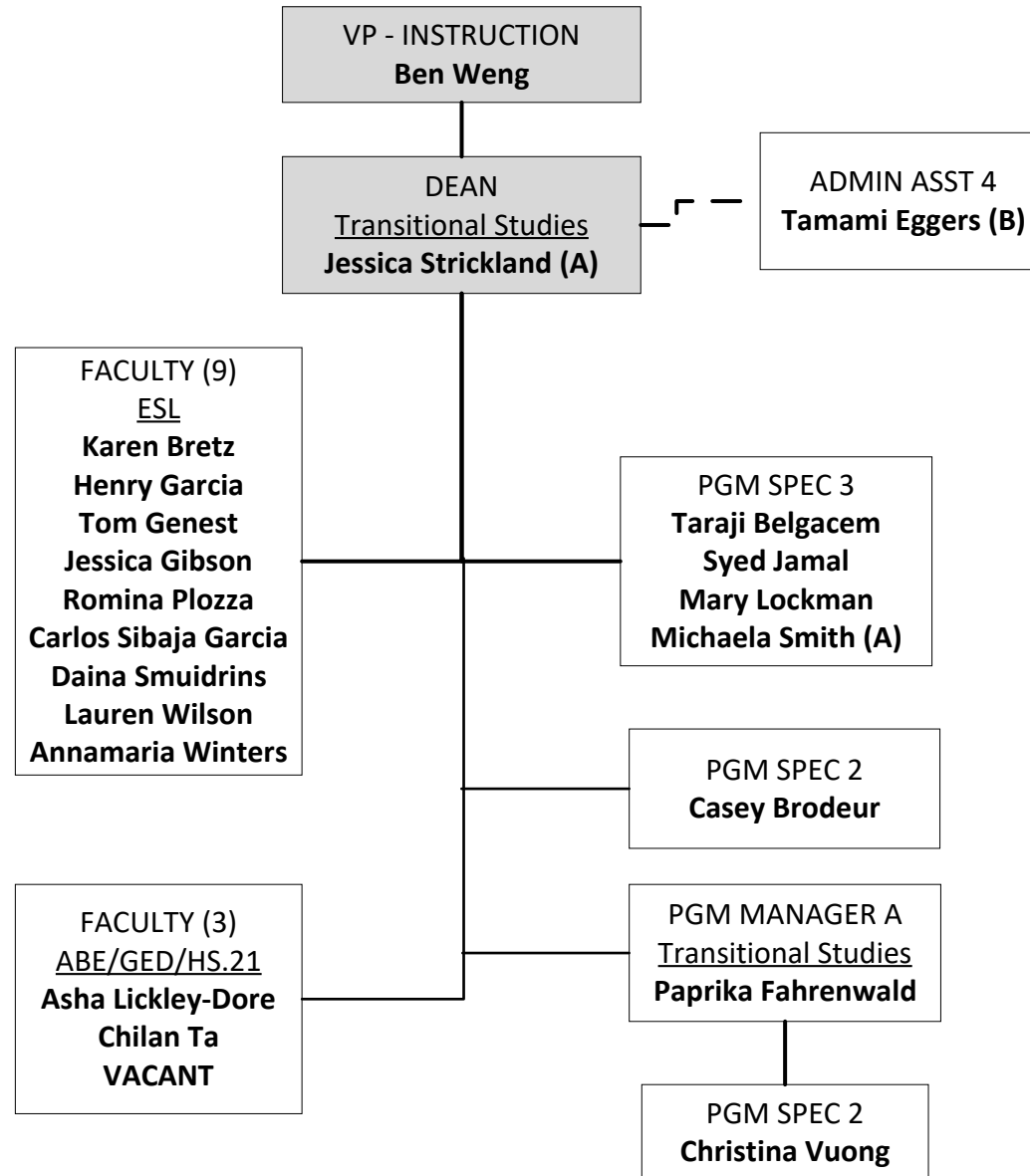


- (A) Temp/Grant Appt
- (B) Also supports Dean-Trans Studies
- (C) Pro-Rata Faculty



OFFICE of INSTRUCTION

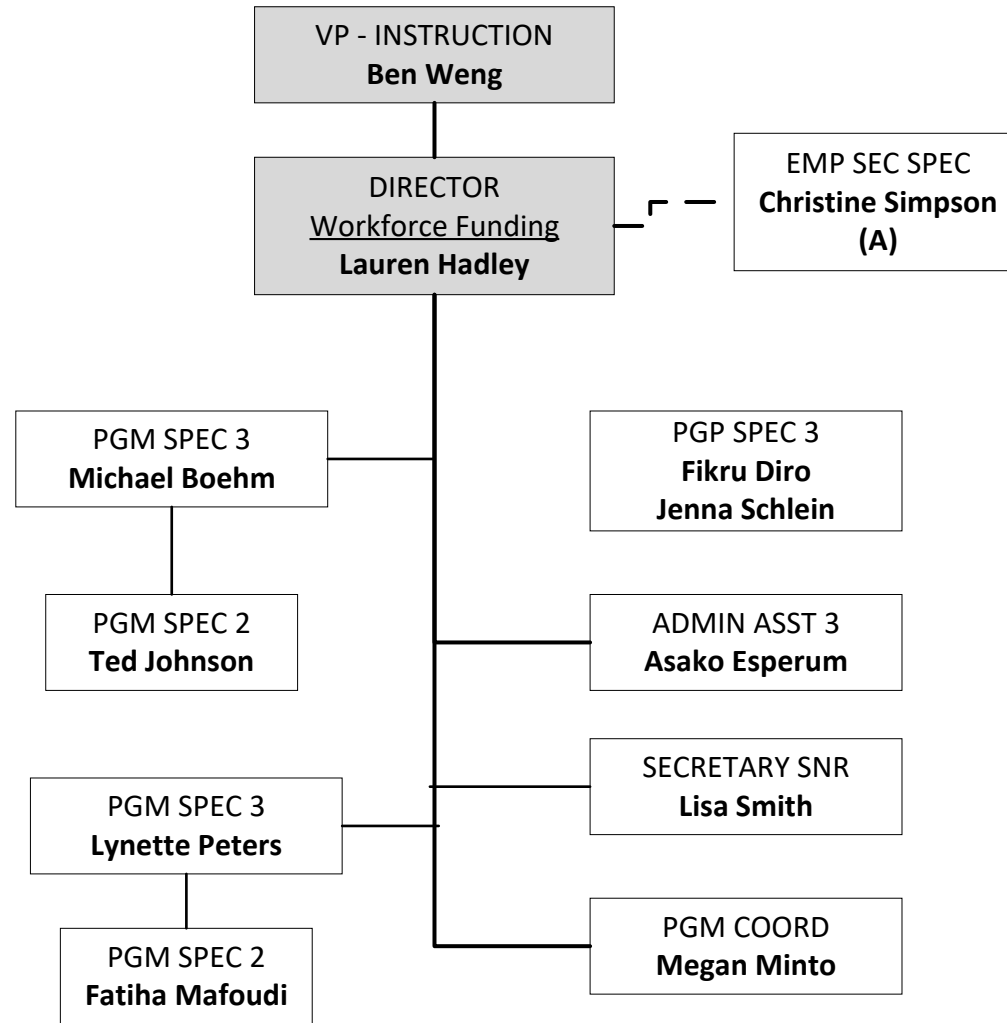
Transitional Studies



- (A) Temp/Grant Appt
- (B) Reports to Dean-Humanities
- (C) Employment Security Partner



OFFICE of INSTRUCTION Workforce

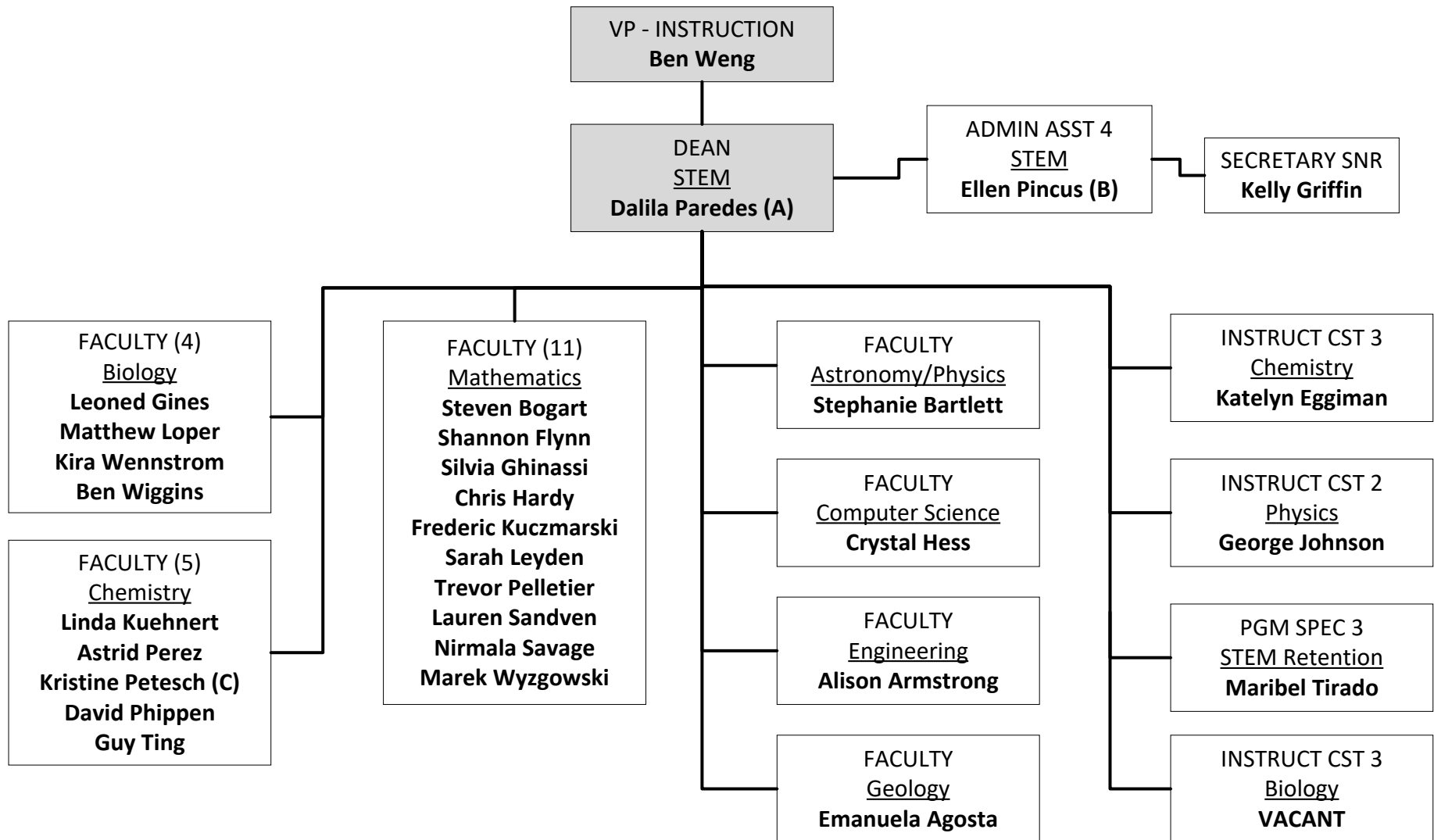


(A) Employment Security Partner



OFFICE of INSTRUCTION

Science, Technology, Engineering & Mathematics (STEM)

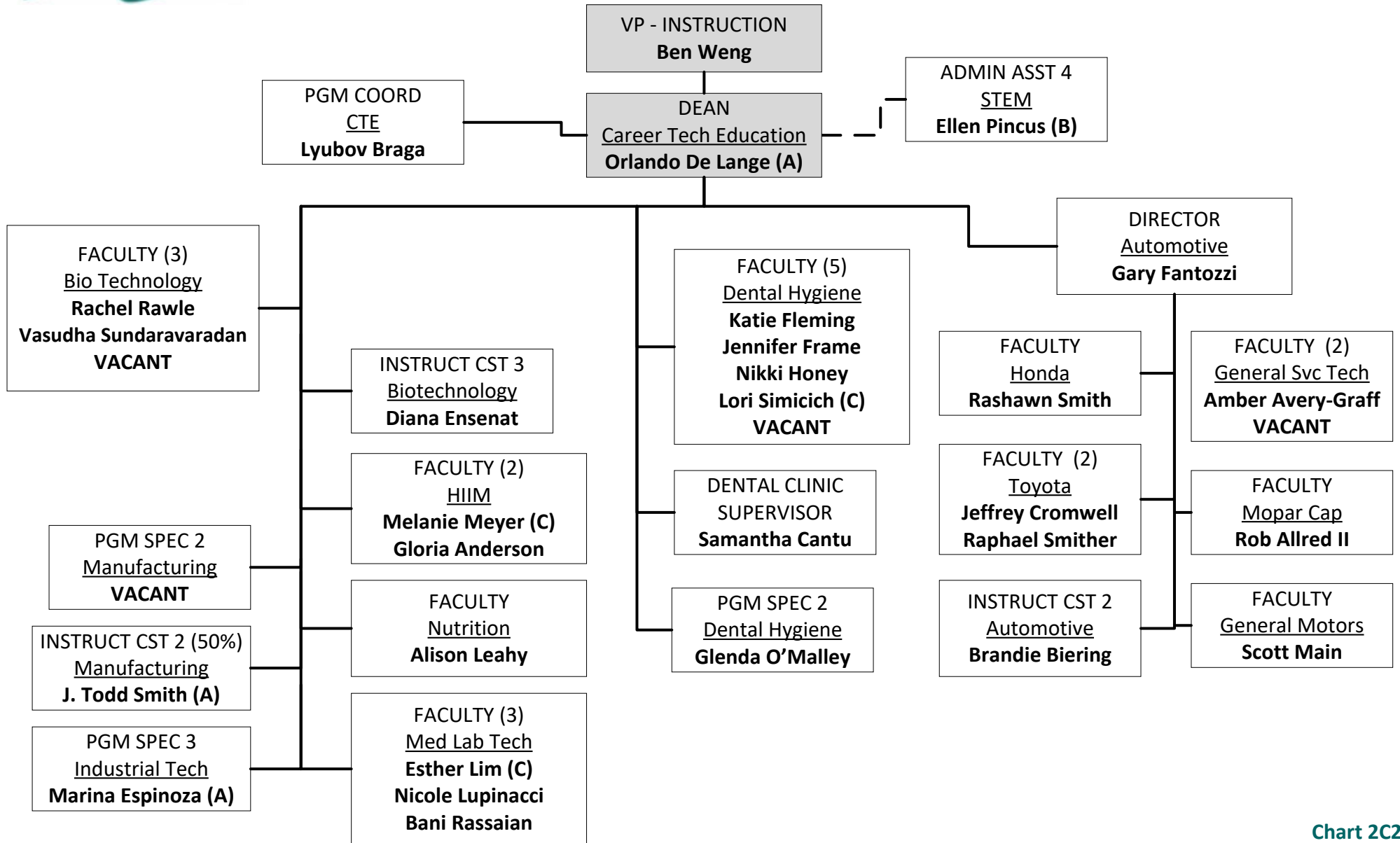


(A) Temp/Grant Appt
(B) Also supports Dean-CTE
(C) Federation President



OFFICE of INSTRUCTION

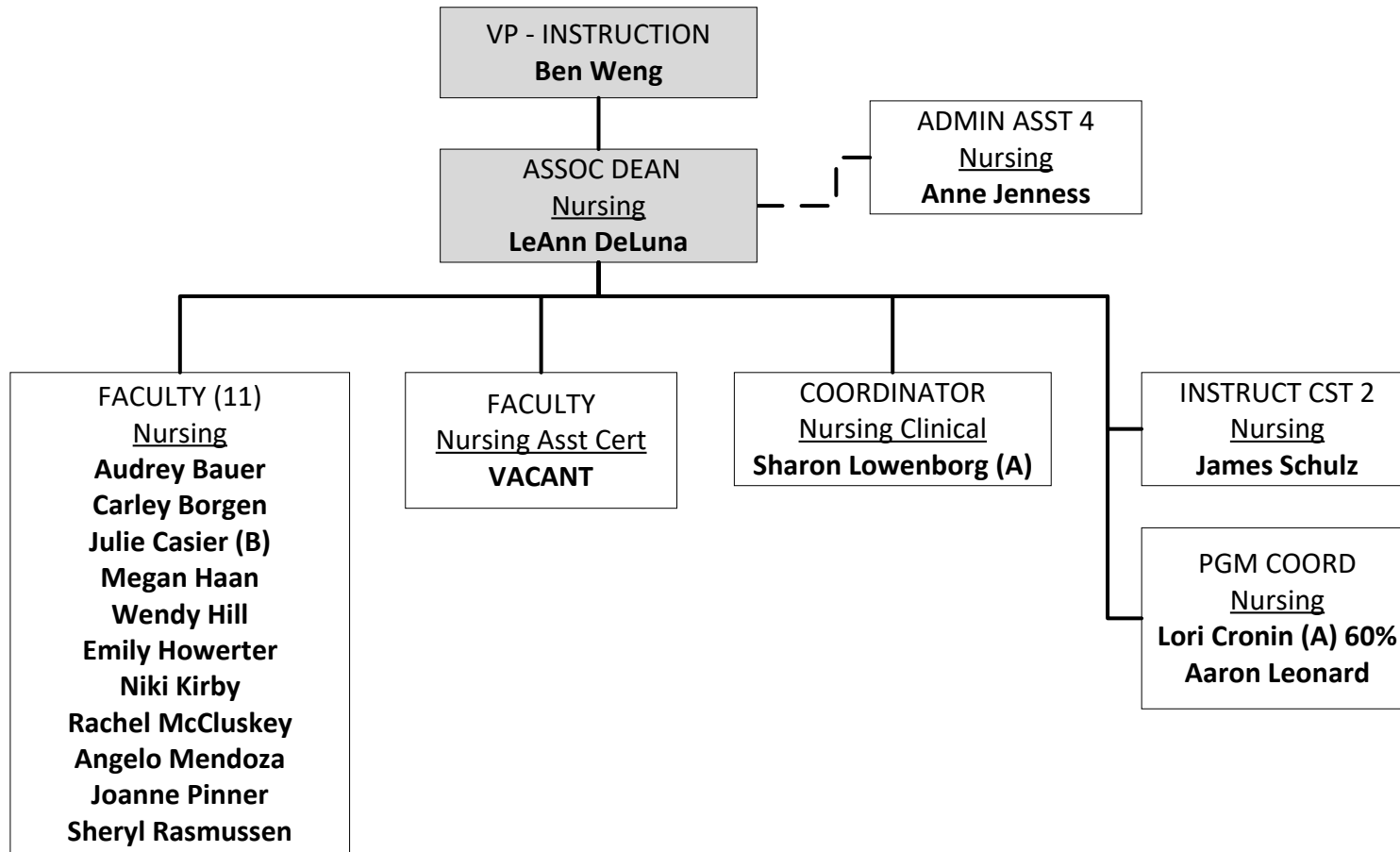
Career Technical Education



(B) Reports to Dean-STEM
(C) Program Director



OFFICE of INSTRUCTION
Nursing

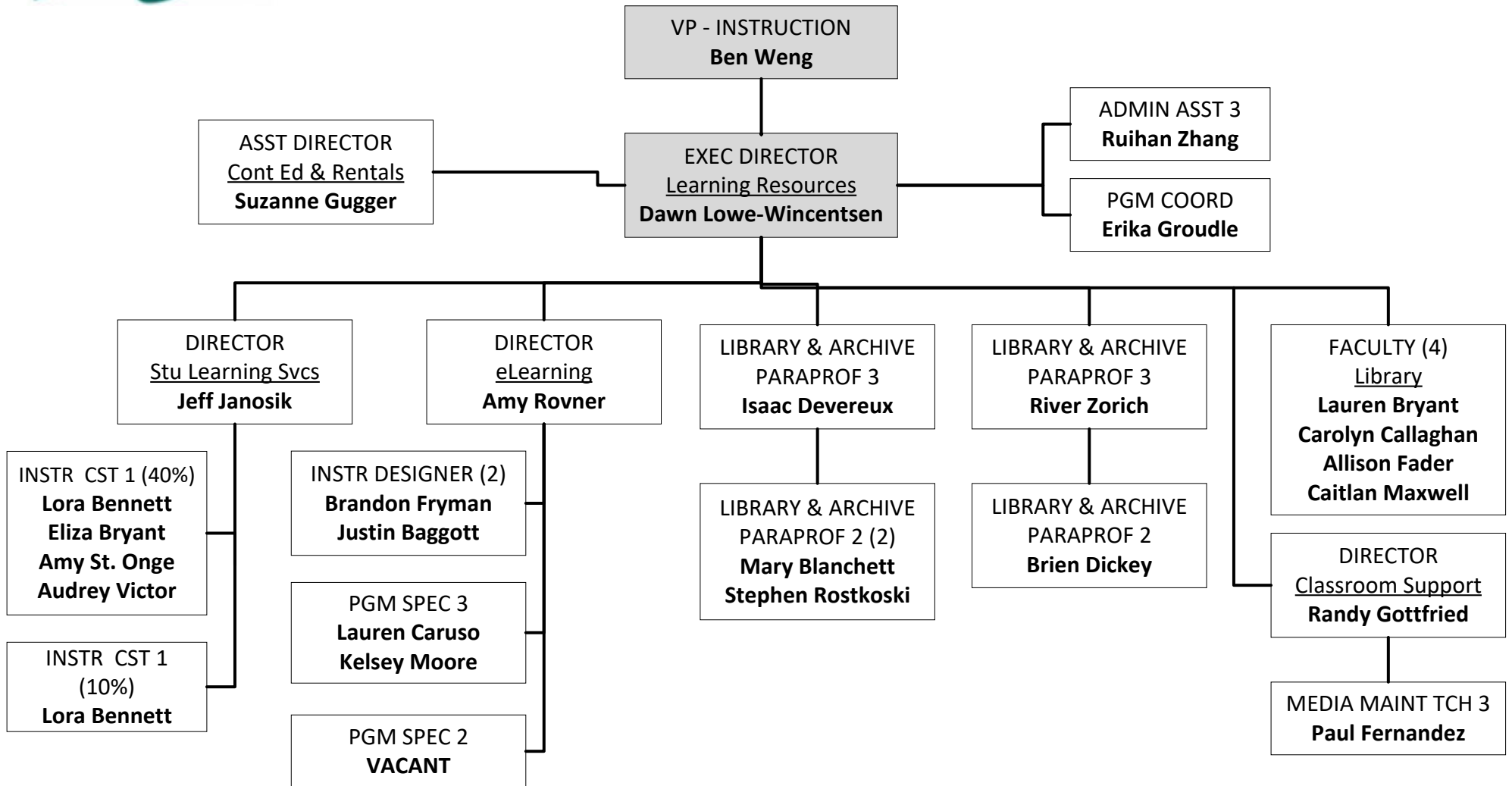


(A) Temp/Grant Appt
(B) Pro-Rata Faculty



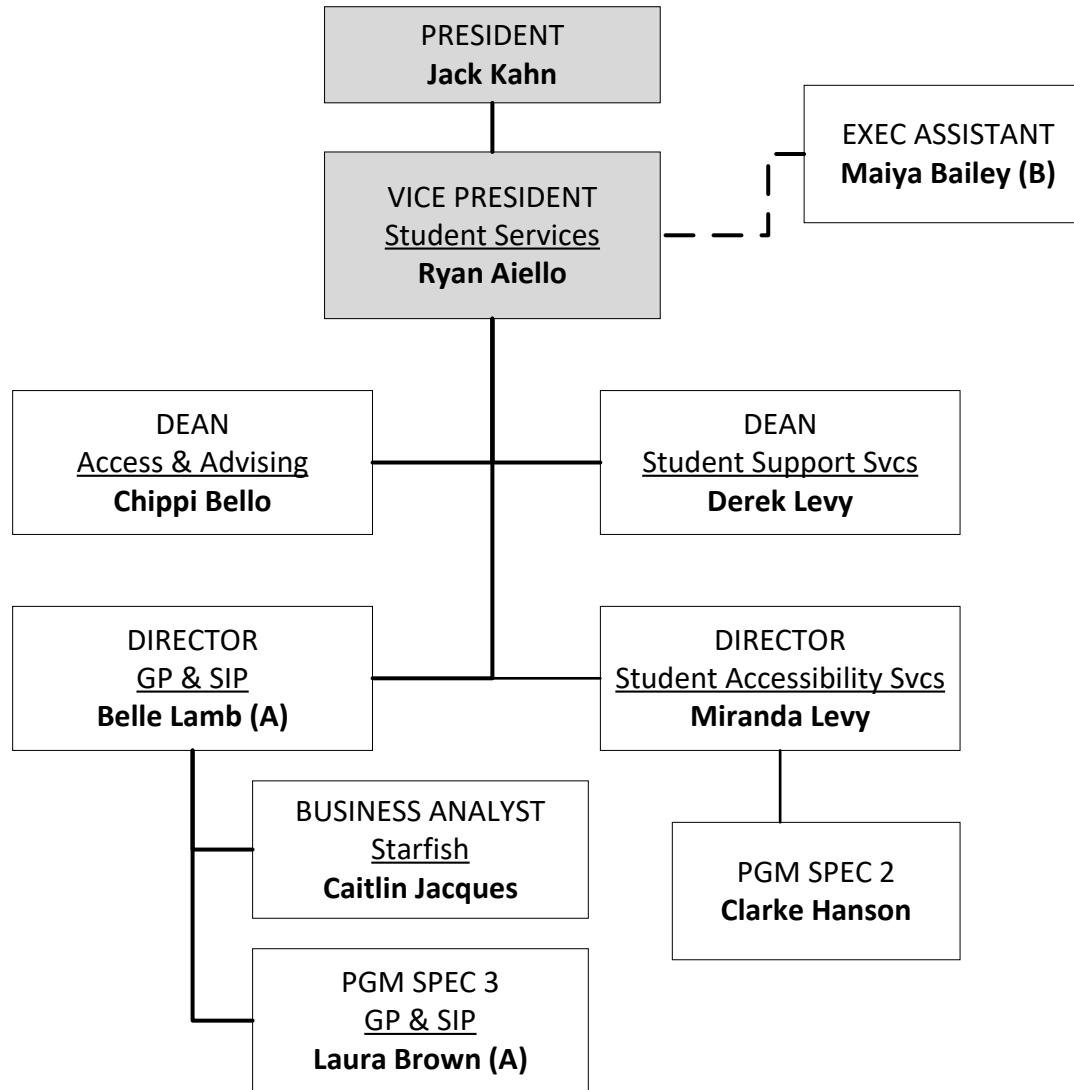
OFFICE of INSTRUCTION

Learning Resources & Continuing Education





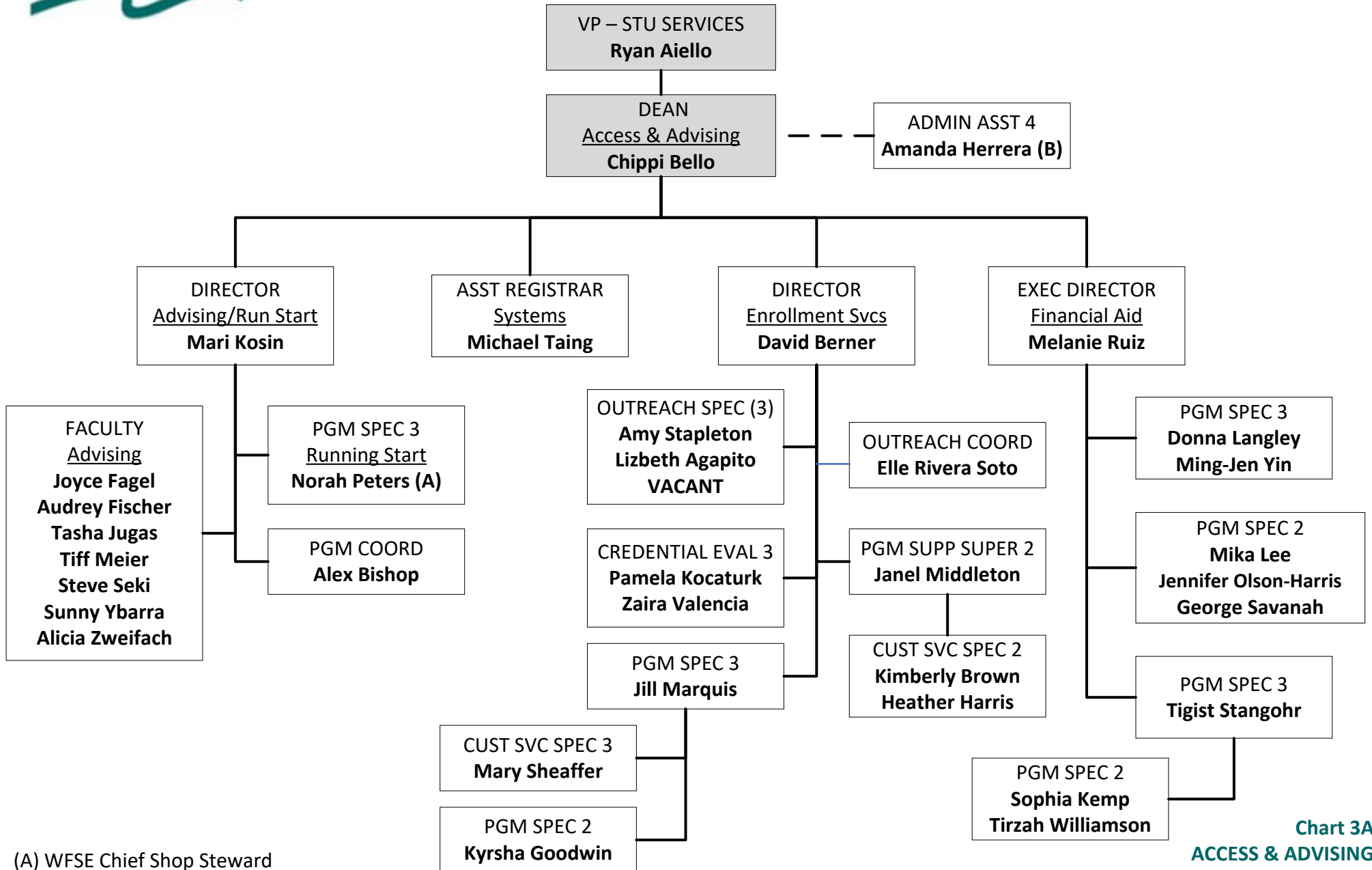
OFFICE of STUDENT SERVICES



(A) Temp/Grant Appt
(B) Reports to VP-Instruction



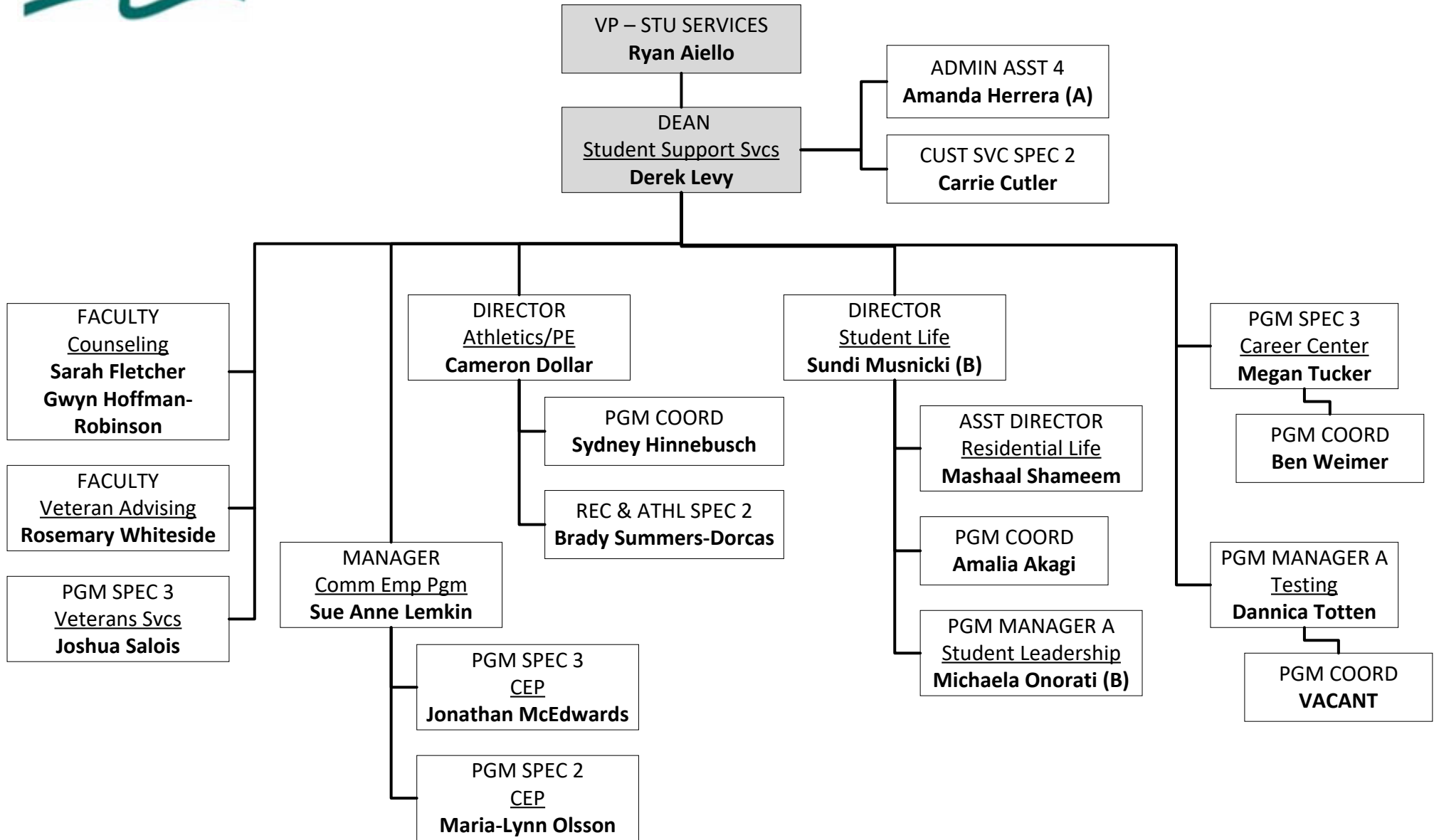
OFFICE of STUDENT SERVICES
Access & Advising



(A) WFSE Chief Shop Steward
 (B) Reports to Dean-Stu Supp Svcs



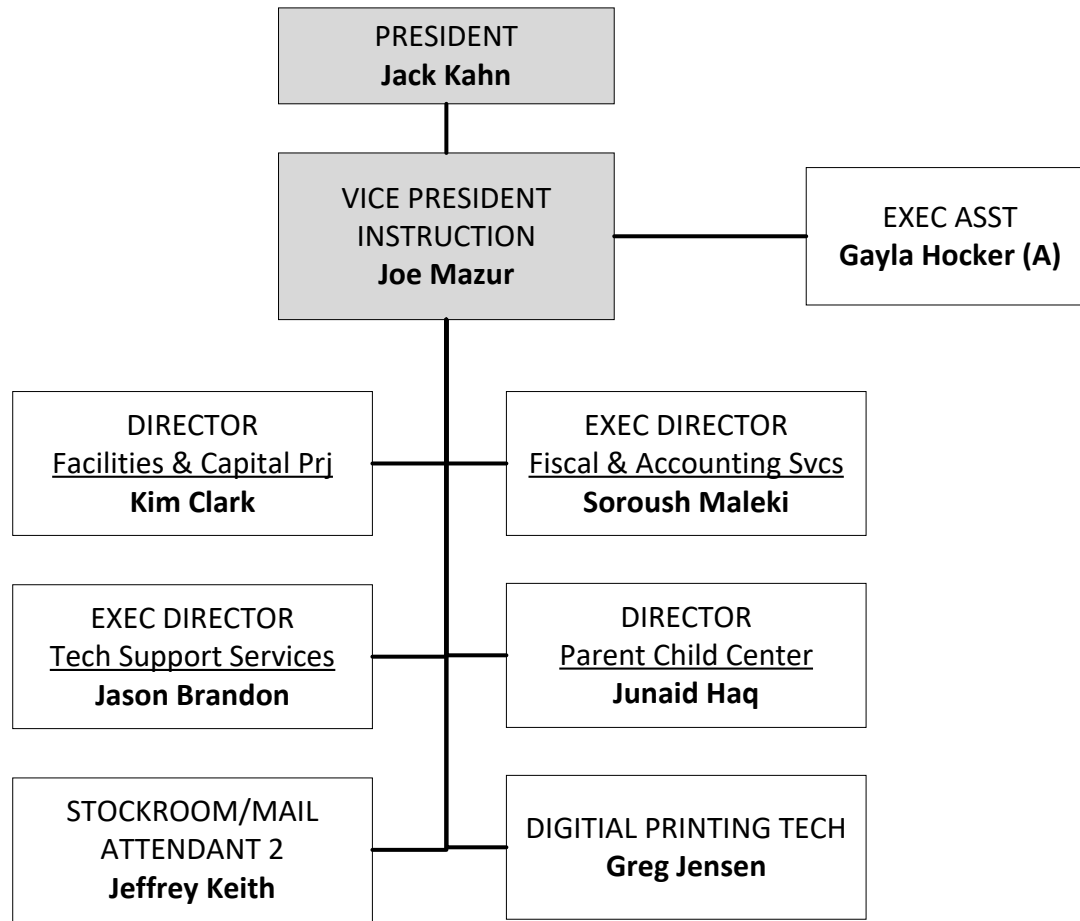
OFFICE of STUDENT SERVICES
Student Support Services



(A) Also supports Dean-Access & Advising
 (B) Temp Appt



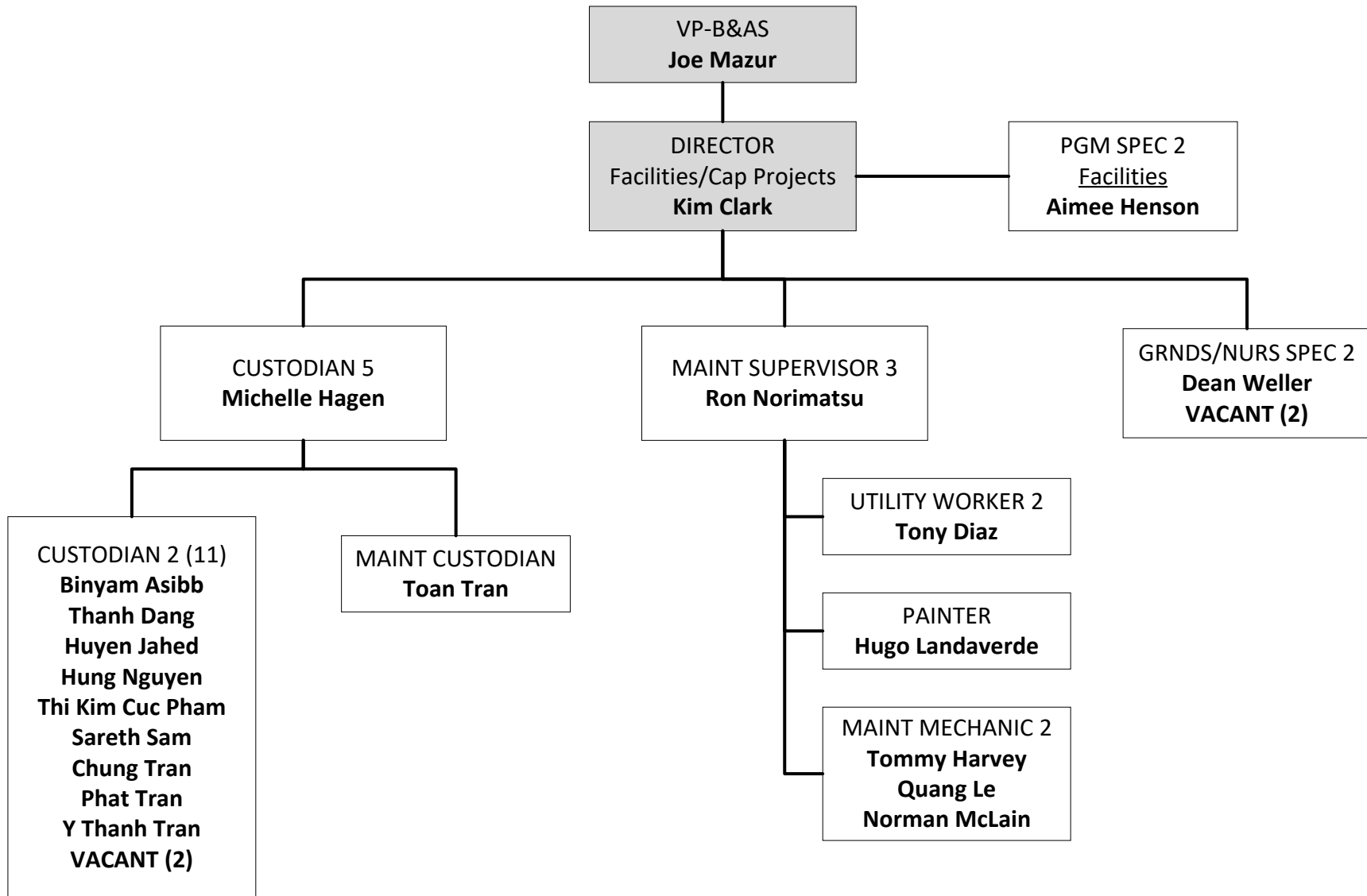
OFFICE of BUSINESS & ADMIN SERVICES



(A) Also supports ED-Foundation



OFFICE of BUSINESS & ADMIN SERVICES
Facilities & Capital Projects





OFFICE of BUSINESS & ADMIN SERVICES
Budget & Financial Services

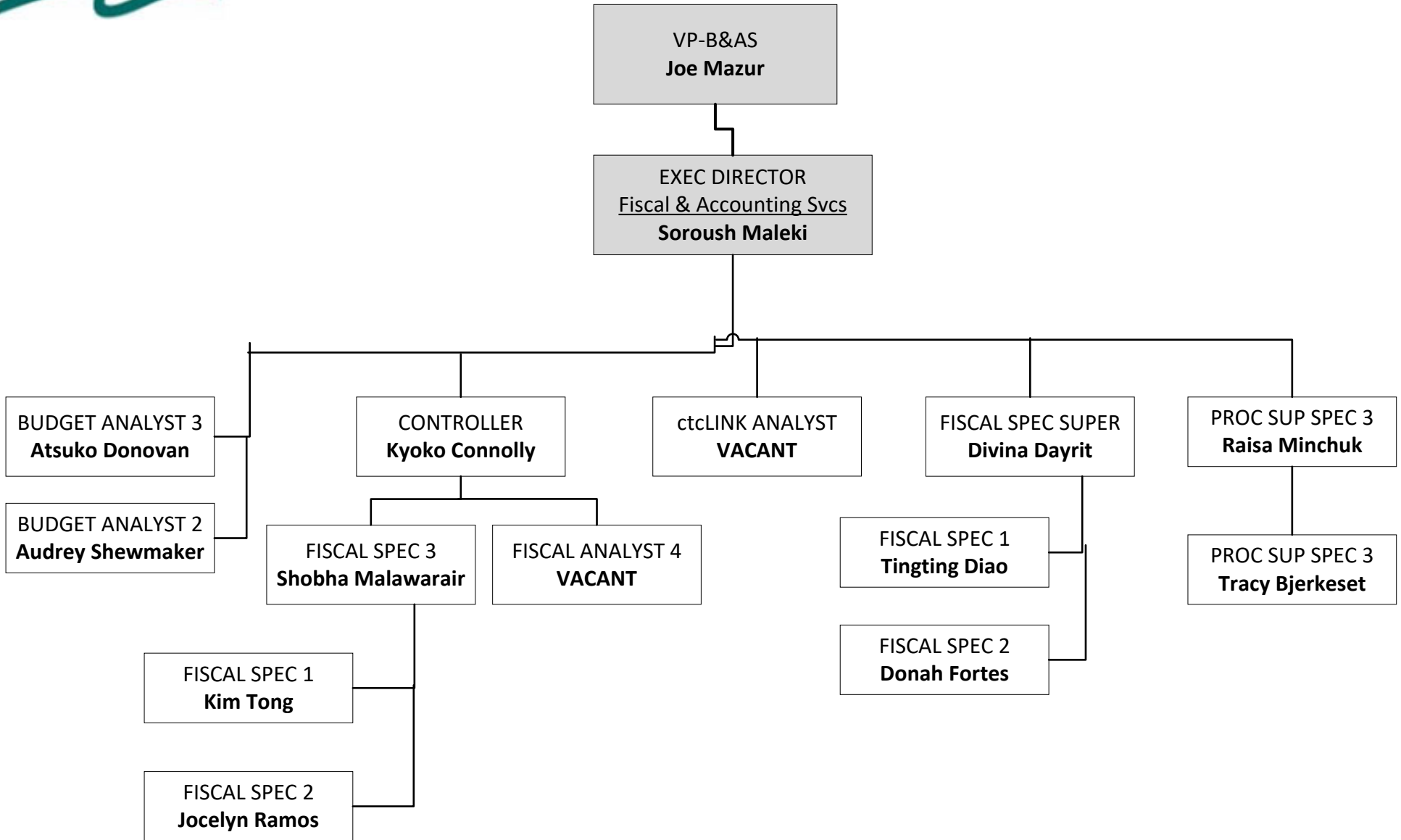
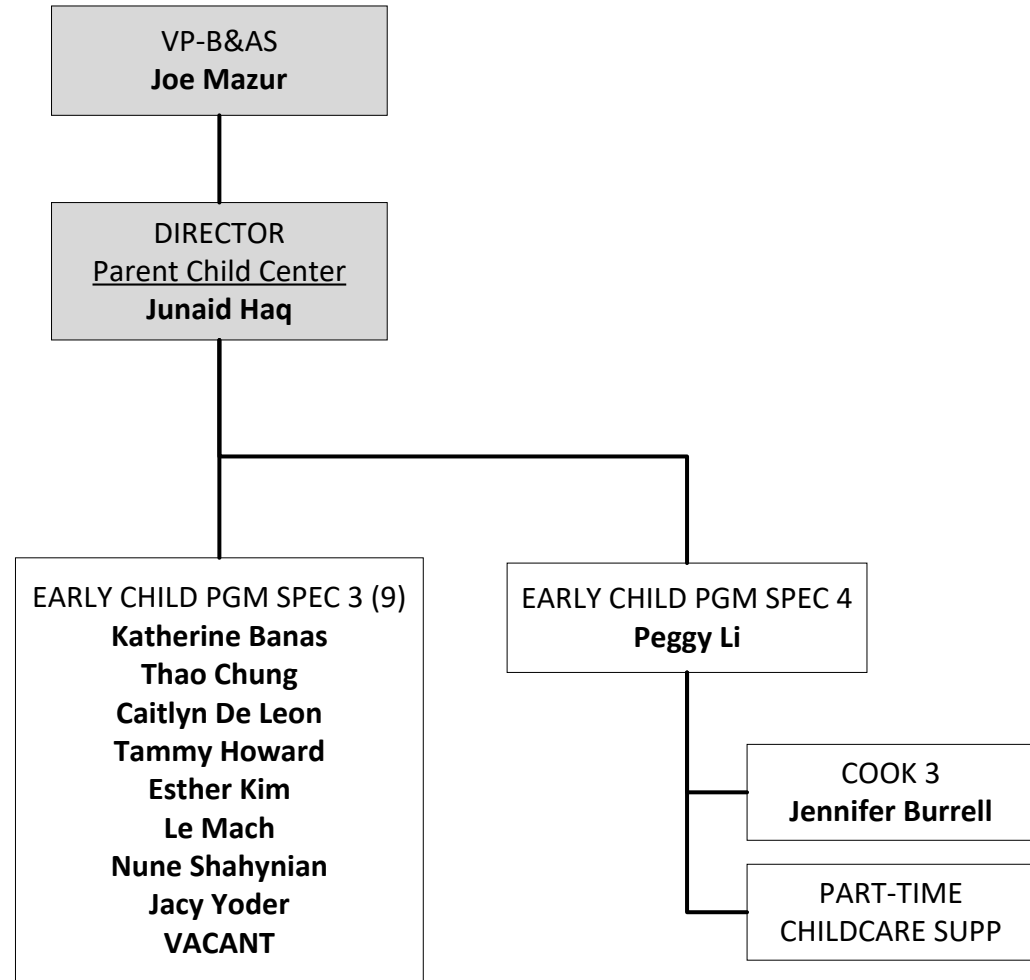


Chart 4B
BUDGET & FINC SVCS
Feb 2025



OFFICE of BUSINESS & ADMIN SERVICES
Parent Child Center





OFFICE of BUSINESS & ADMIN SERVICES
Technology Support Services

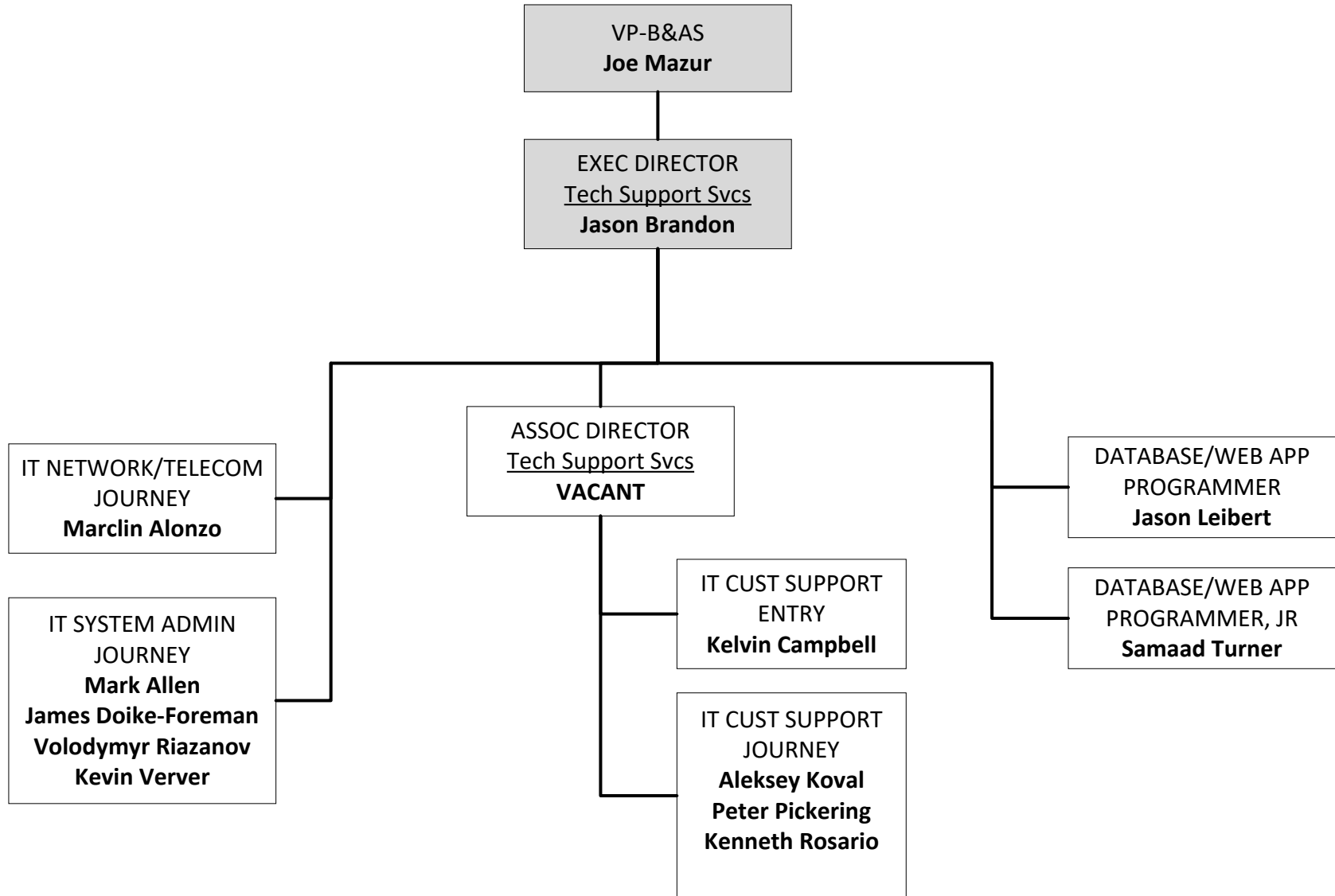
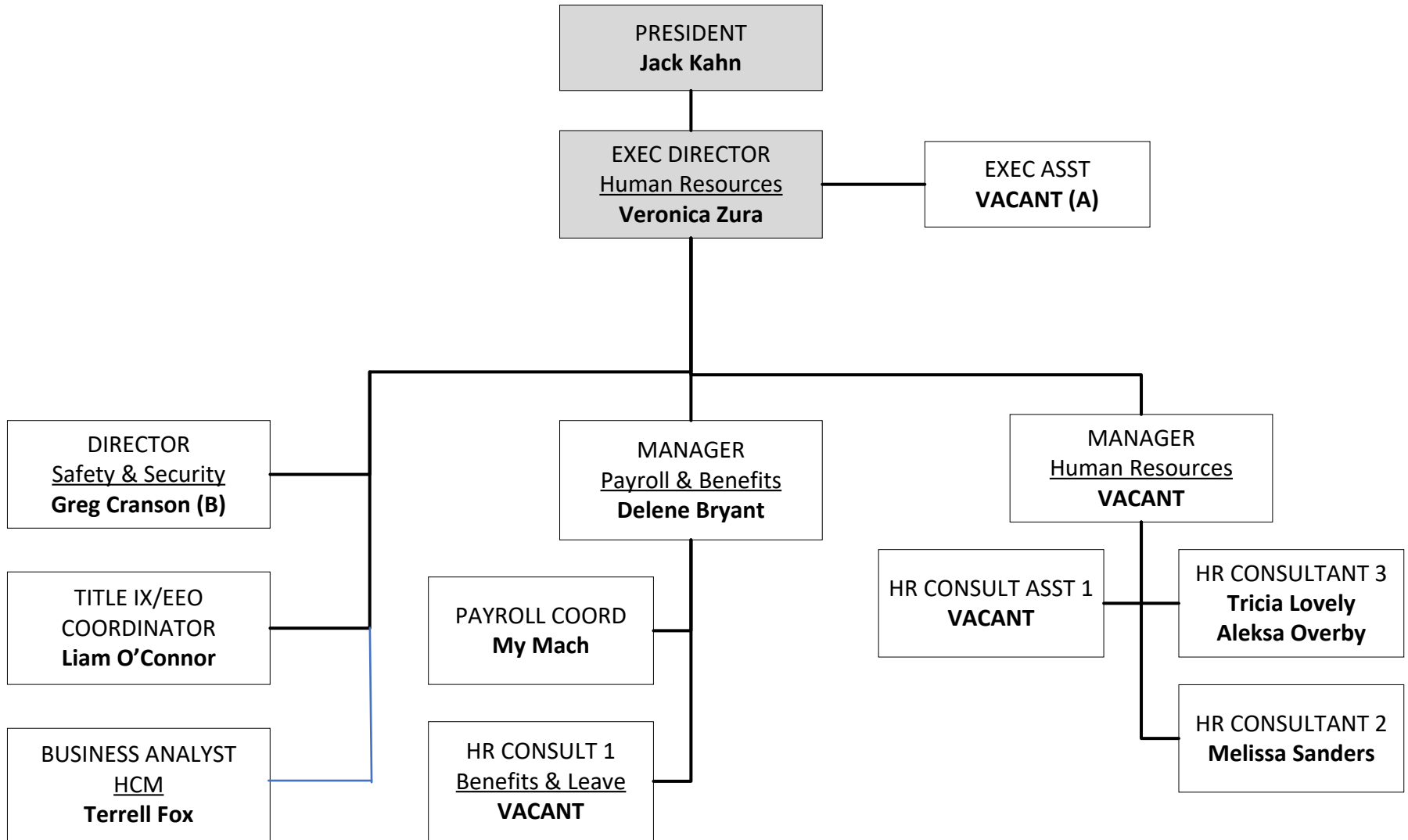


Chart 4D
TECH SUPPORT SVCS
Feb 2025



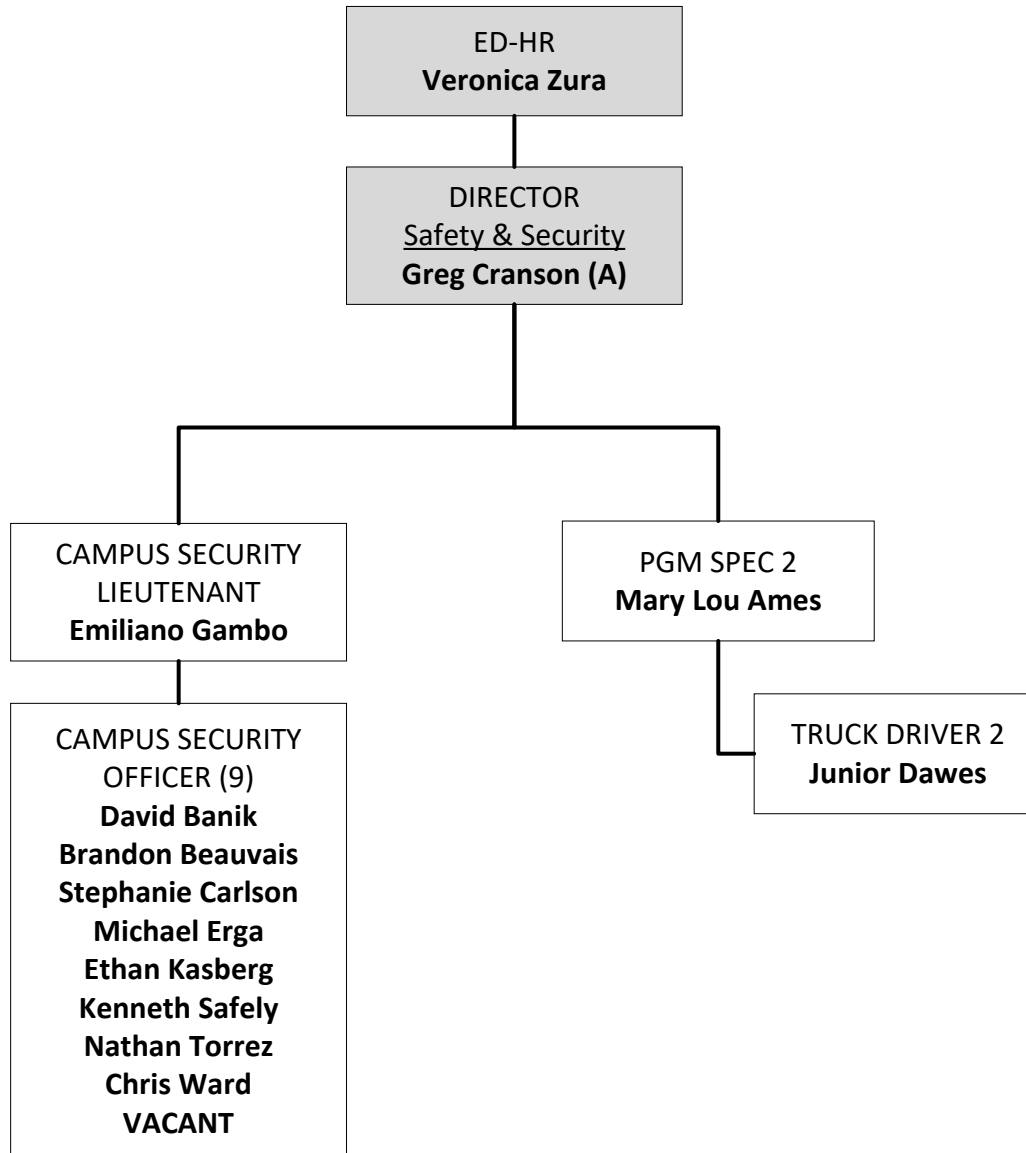
OFFICE of HUMAN RESOURCES



(A) Also supports ED-C&M
(B) Temp/Grant Appt



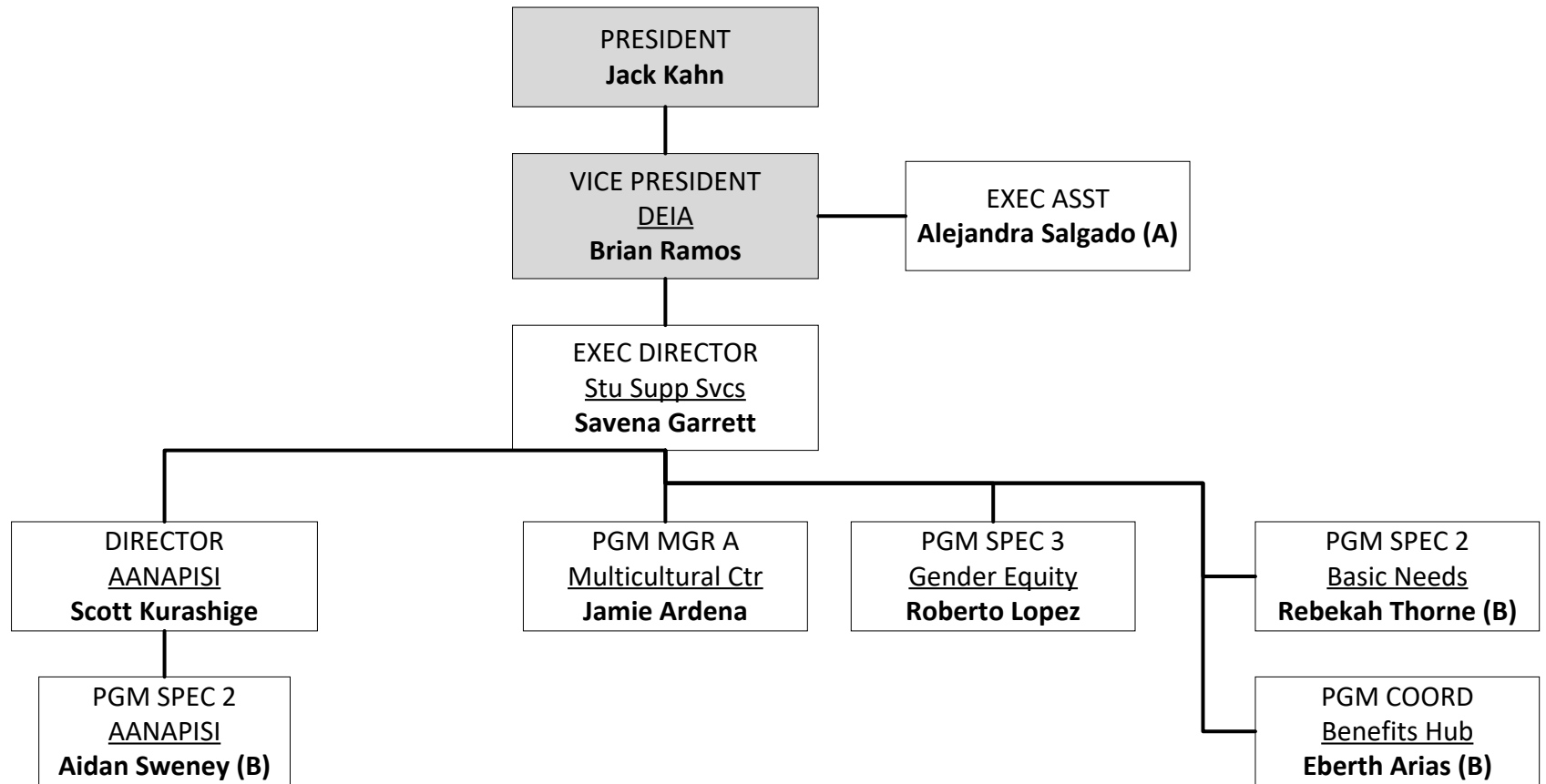
OFFICE of HUMAN RESOURCES
Safety & Security



(A) Temp/Grant Appt



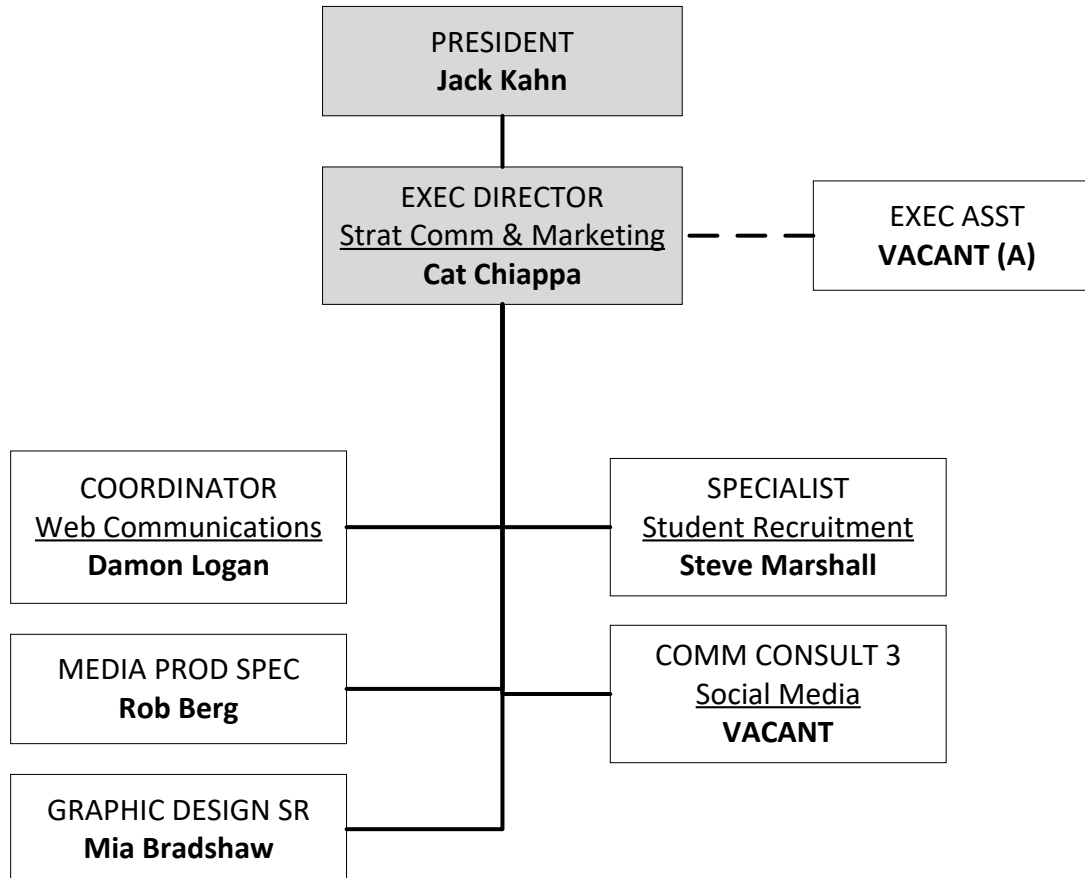
OFFICE of DIVERSITY, EQUITY, INCLUSION & ACCESSIBILITY



(A) Also support ED-PIE
(B) Temp/Grant Appt



OFFICE of COMMUNICATIONS & MARKETING



(A) Reports to ED-HR