

ORGANIZATIONAL CHART

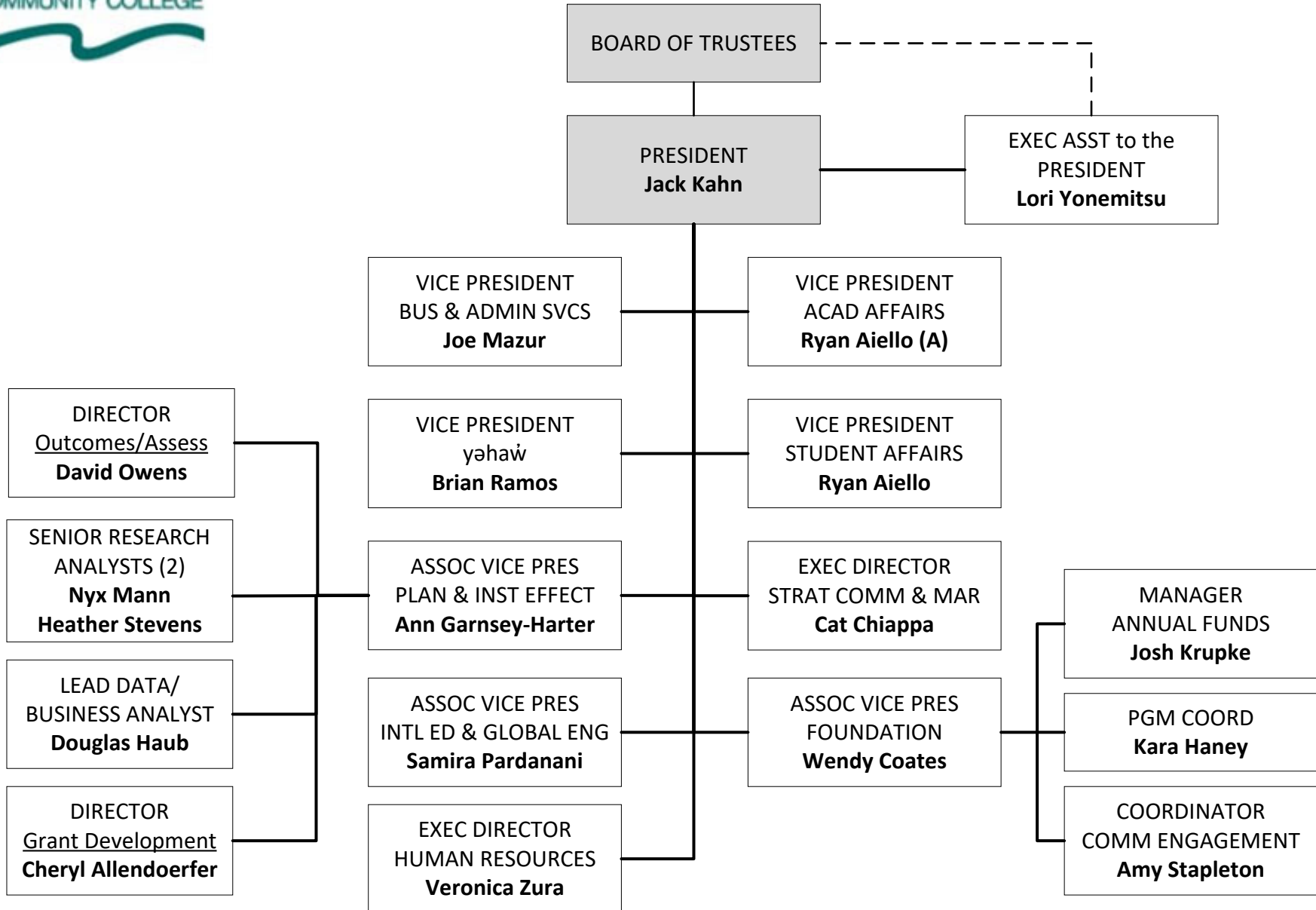
APRIL 2026



	<u>Page</u>
1. <u>Office of the President</u>	2
1A International Education & Global Engagement	3
2. <u>Academic Affairs</u>	4
2A Business, Communication & Social Sciences	5
2B1 Humanities	6
2B2 Transitional Studies	7
2B3 Workforce Funding	8
2C1 Science, Technology, Engineering & Mathematics	9
2C2 Career Technical Education	10
2D Nursing	11
2E Library & Learning Resources	12
3. <u>Student Affairs</u>	13
3A Access & Advising	14
3B Student Support Services	15
4. <u>Business & Administrative Services</u>	16
4A Facilities	17
4B Budget & Financial Services	18
4C Parent Child Center	19
4D Technology Support Services	20
5. <u>Human Resources</u>	21
5A Safety & Security	22
6. <u>Office of yəhaw'</u>	23
7. <u>Communications & Marketing</u>	24



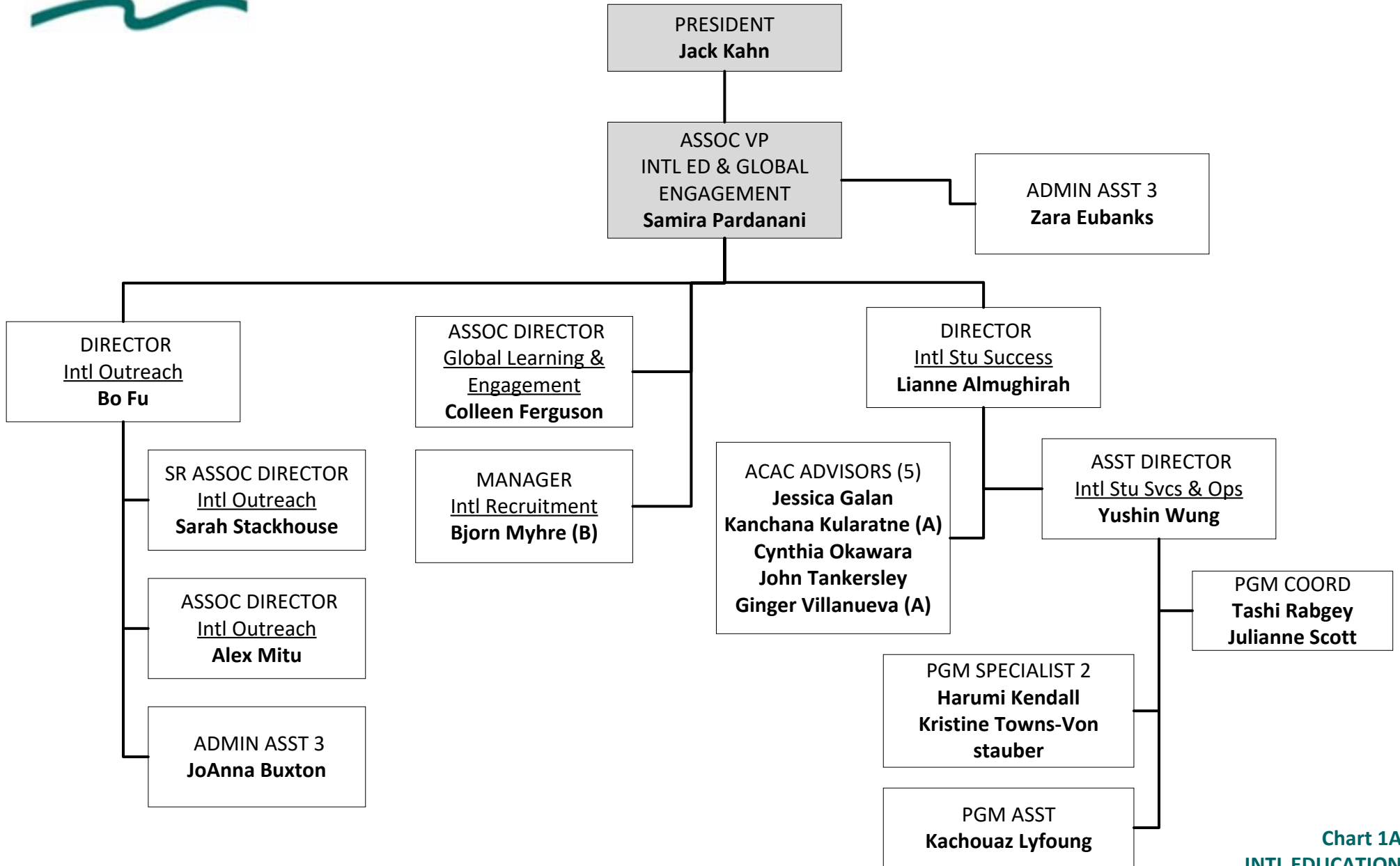
OFFICE of the PRESIDENT



(A) Acting/Interim Appt



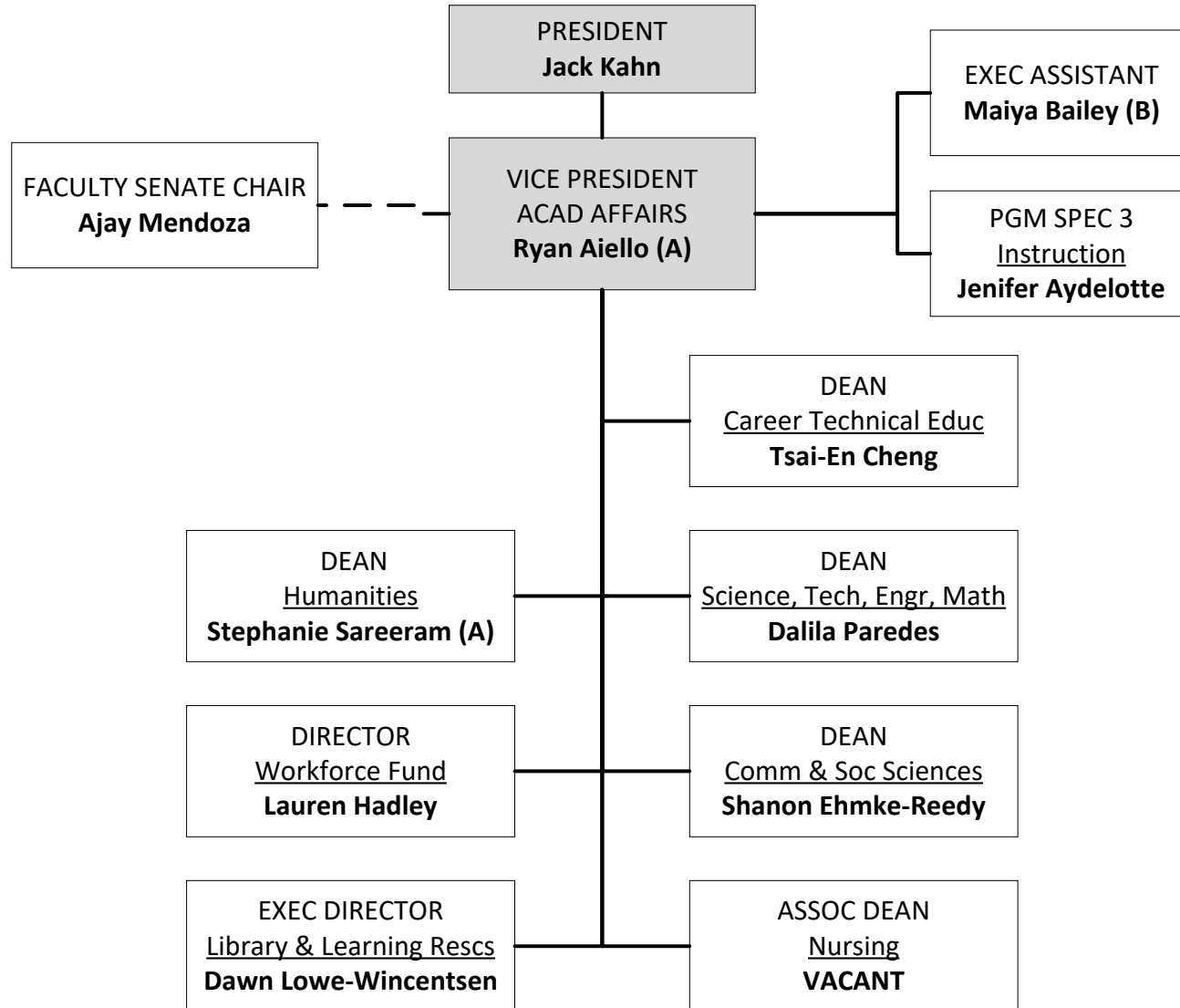
OFFICE of INTERNATIONAL EDUCATION & GLOBAL ENGAGEMENT



(A) FT Annual Faculty
(B) Acting/Interim Appt



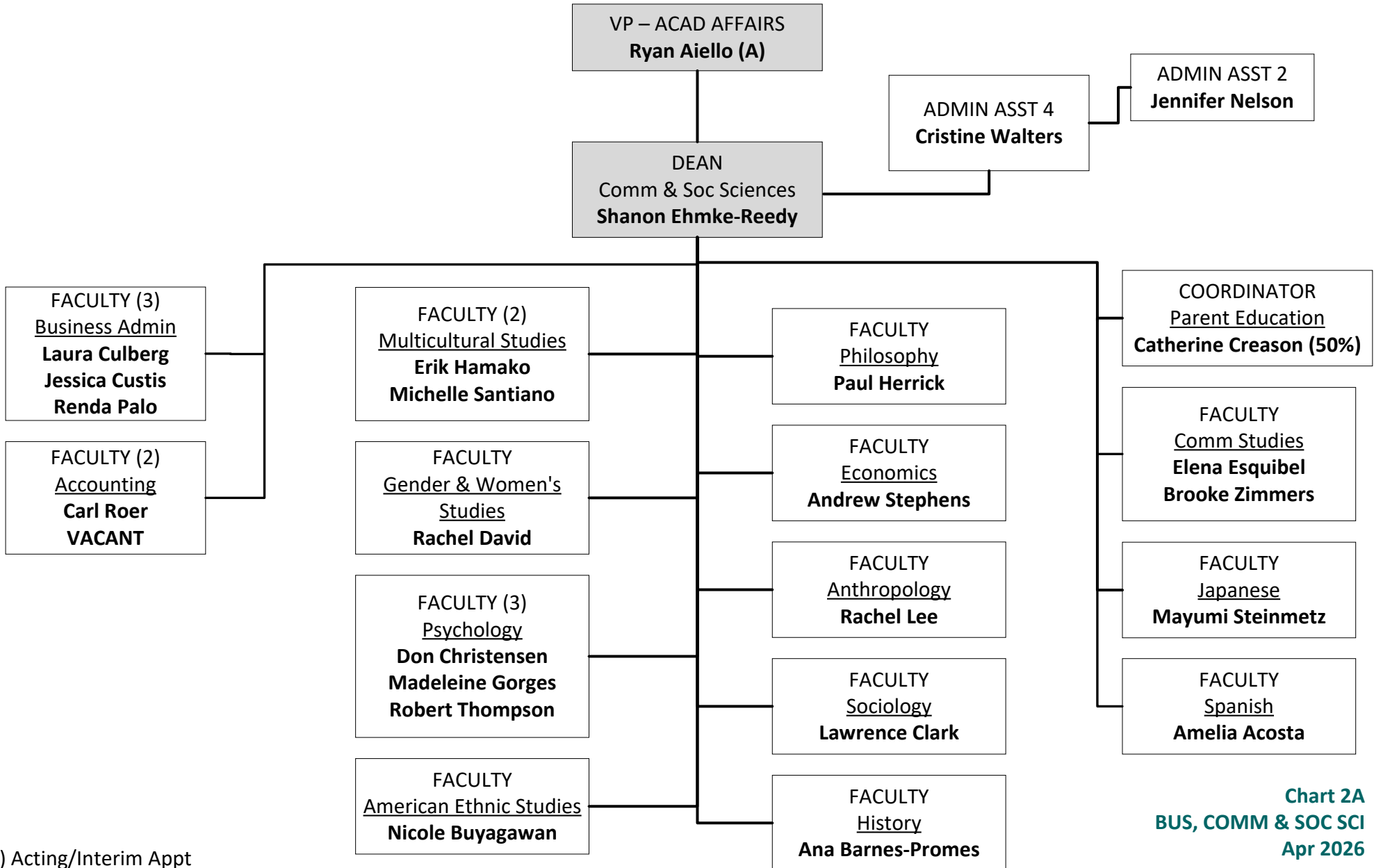
OFFICE of ACADEMIC AFFAIRS



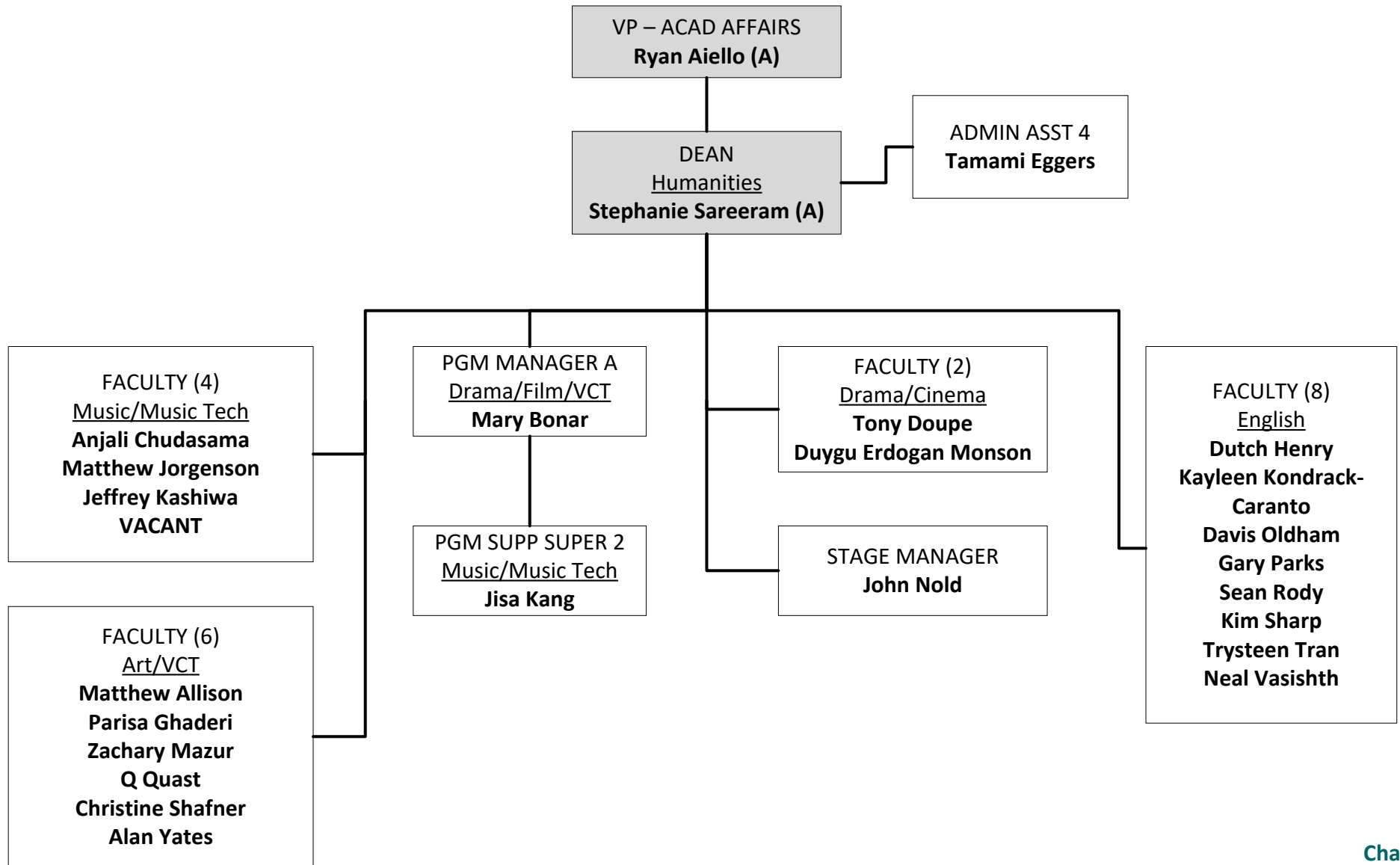
(A) Acting/Interim Appt
(B) Also supports VP-SA



OFFICE of ACADEMIC AFFAIRS
Business, Communication & Social Sciences

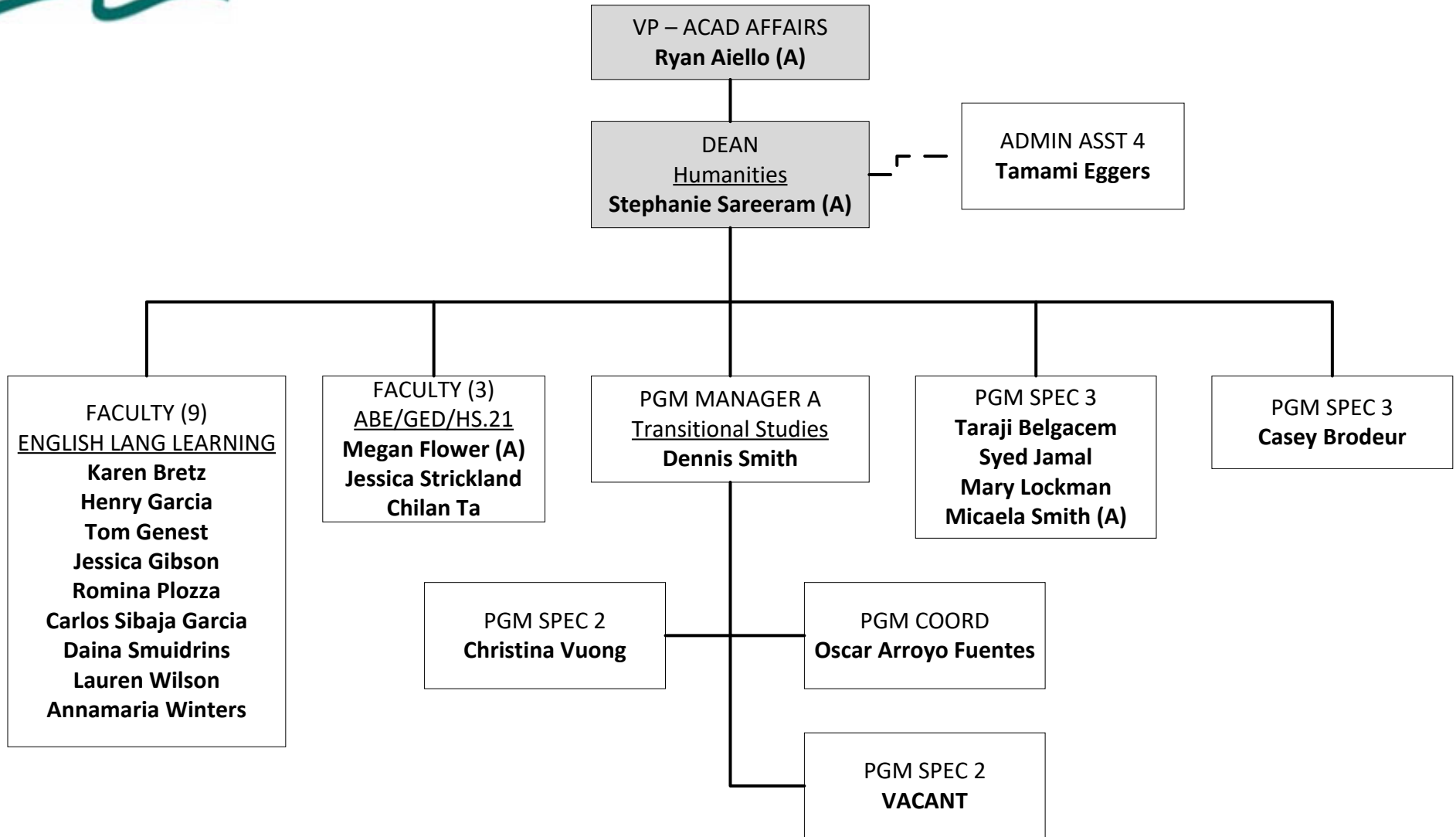


(A) Acting/Interim Appt





OFFICE of ACADEMIC AFFAIRS
Transitional Studies

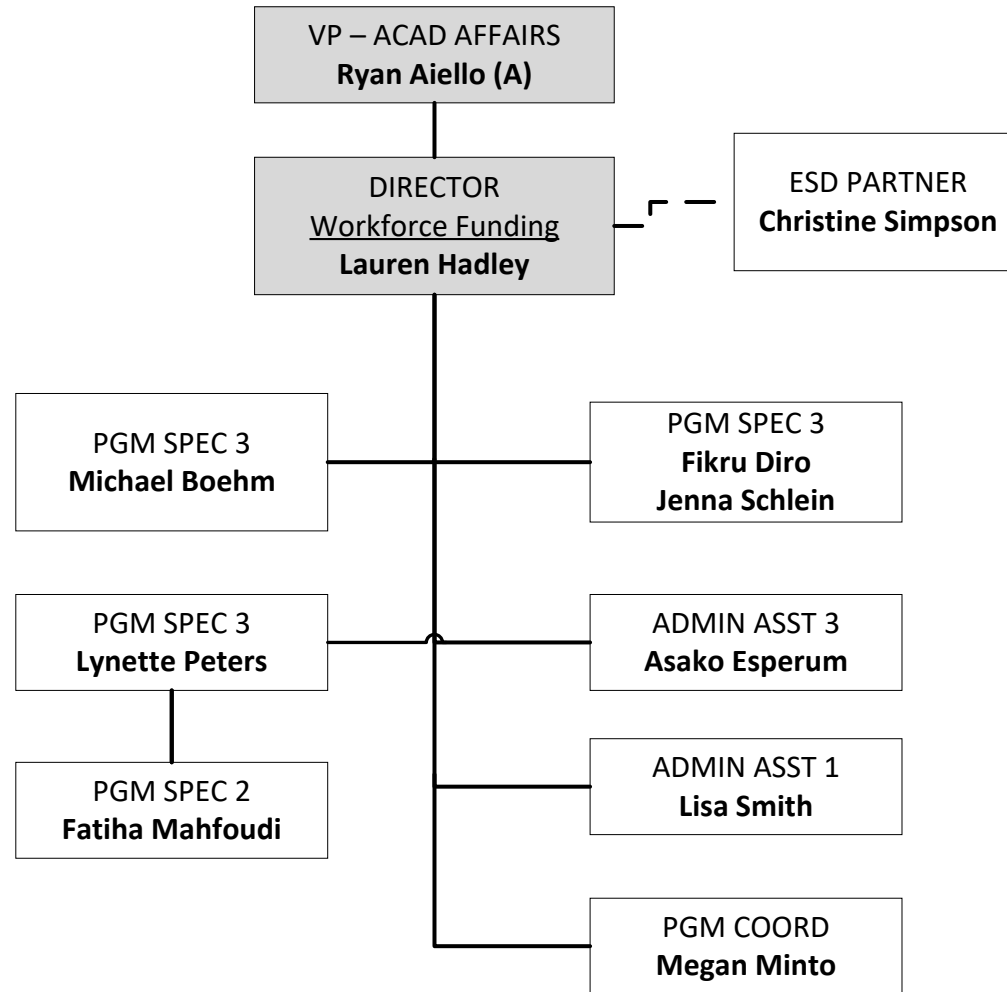


(A) Acting/Interim Appt



OFFICE of ACADEMIC AFFAIRS

Workforce Funding

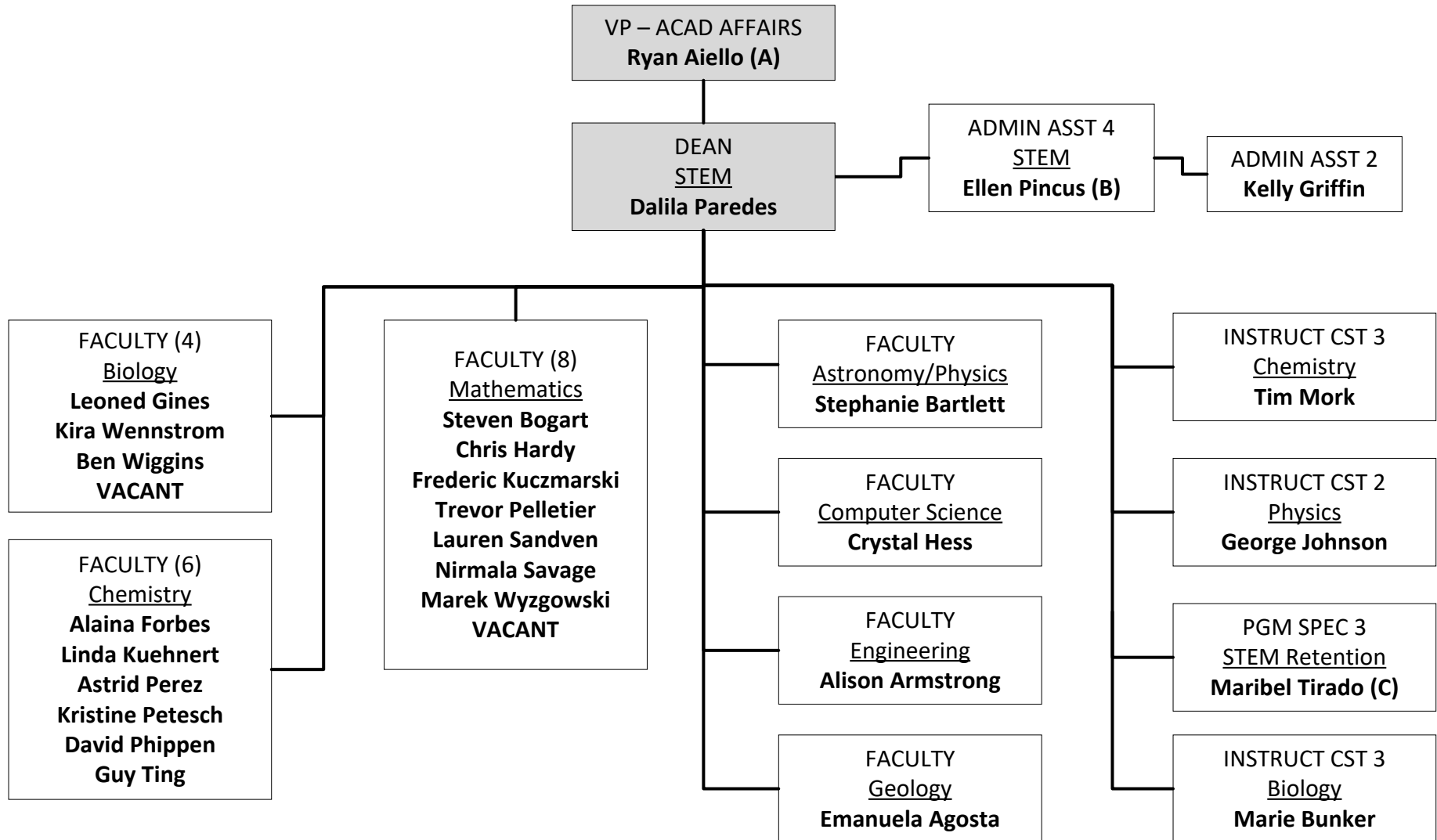


(A) Acting/Interim Appt



OFFICE of ACADEMIC AFFAIRS

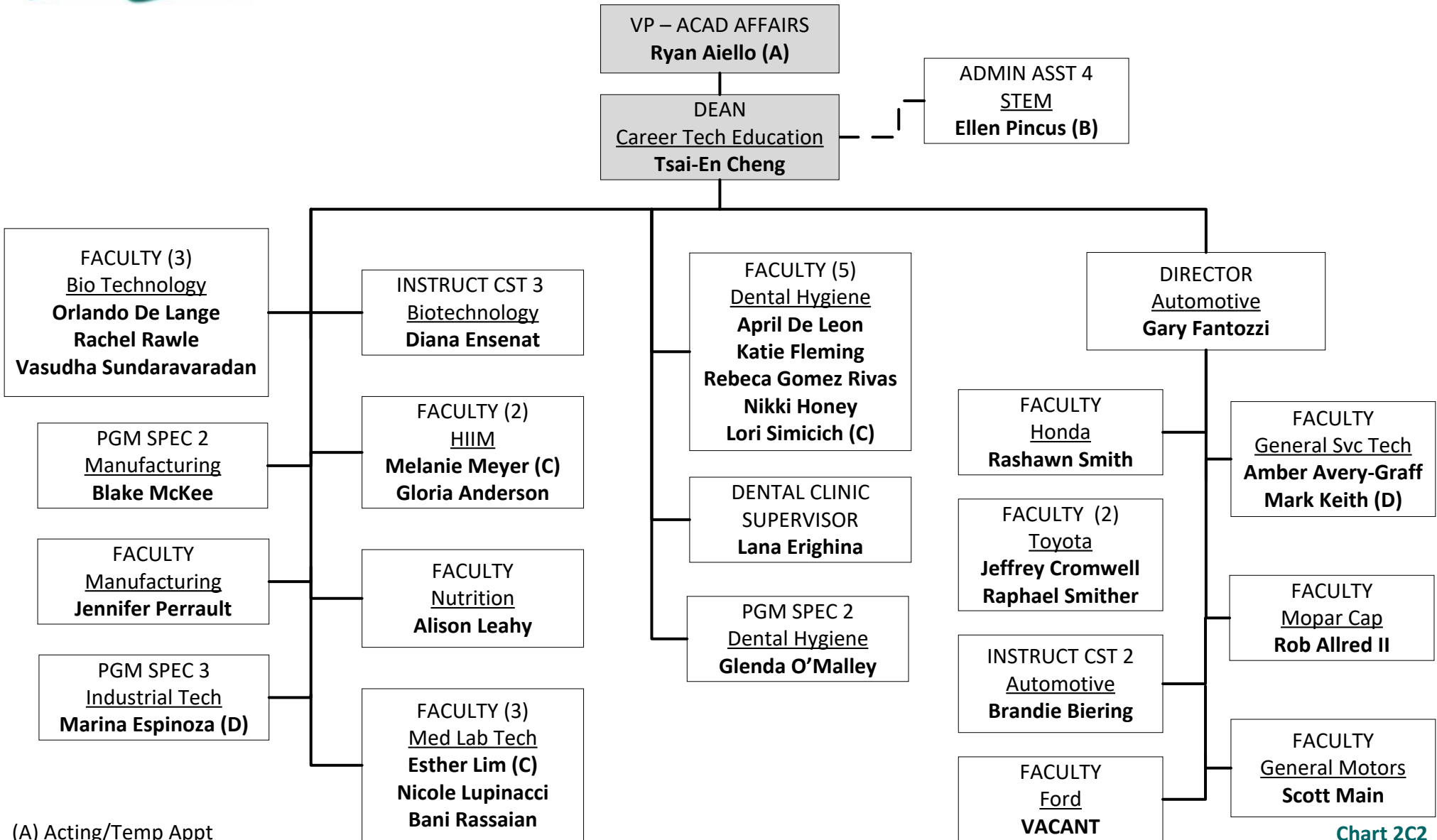
Science, Technology, Engineering & Mathematics (STEM)



- (A) Acting/Interim Appt
- (B) Also Supports Dean-CTE
- (C) Temp/Grant Funded Position



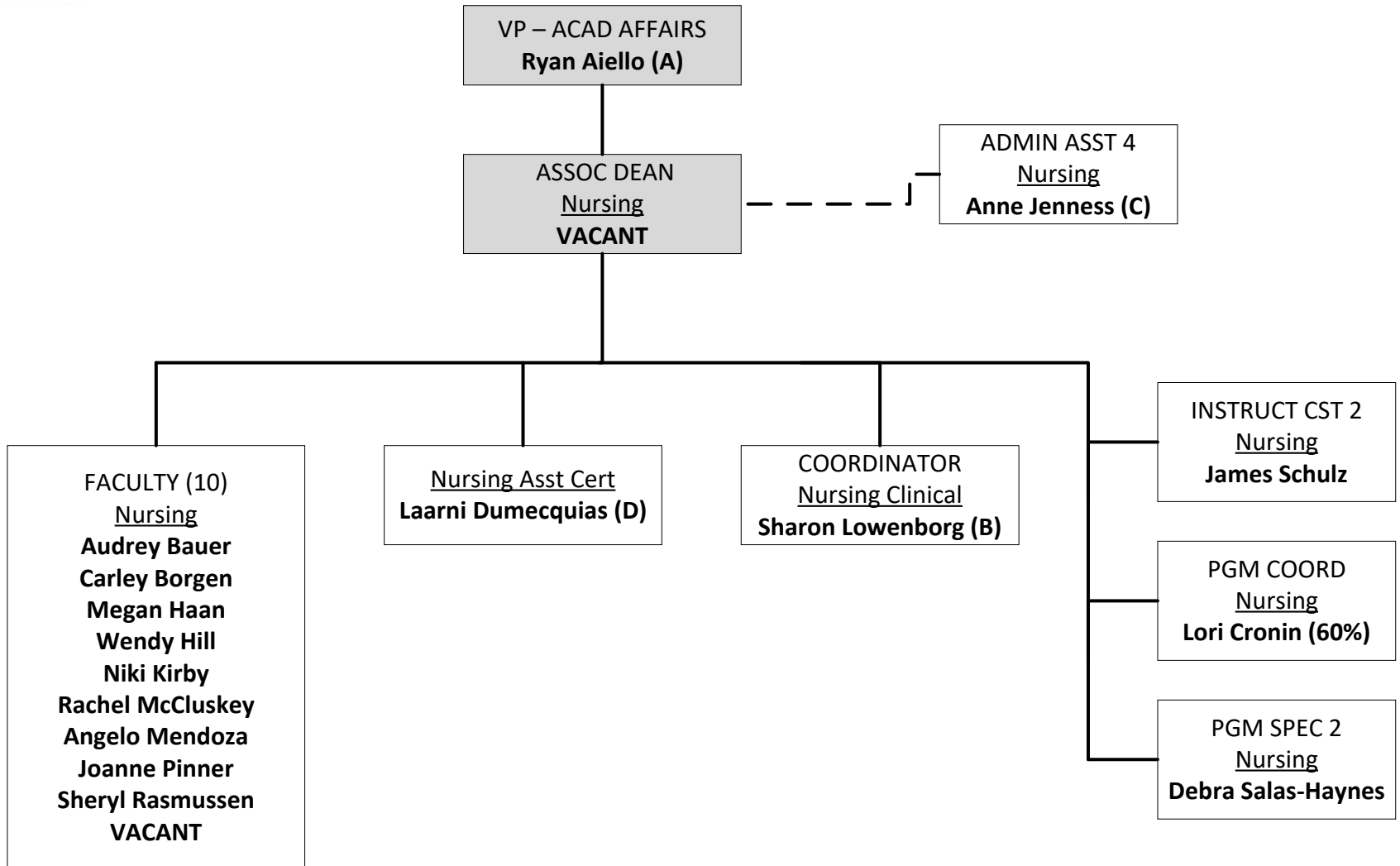
OFFICE of ACADEMIC AFFAIRS
Career Technical Education



- (A) Acting/Temp Appt
- (B) Also Supports Dean-STEM
- (C) Program Director
- (D) Temp/Grant Funded Appt



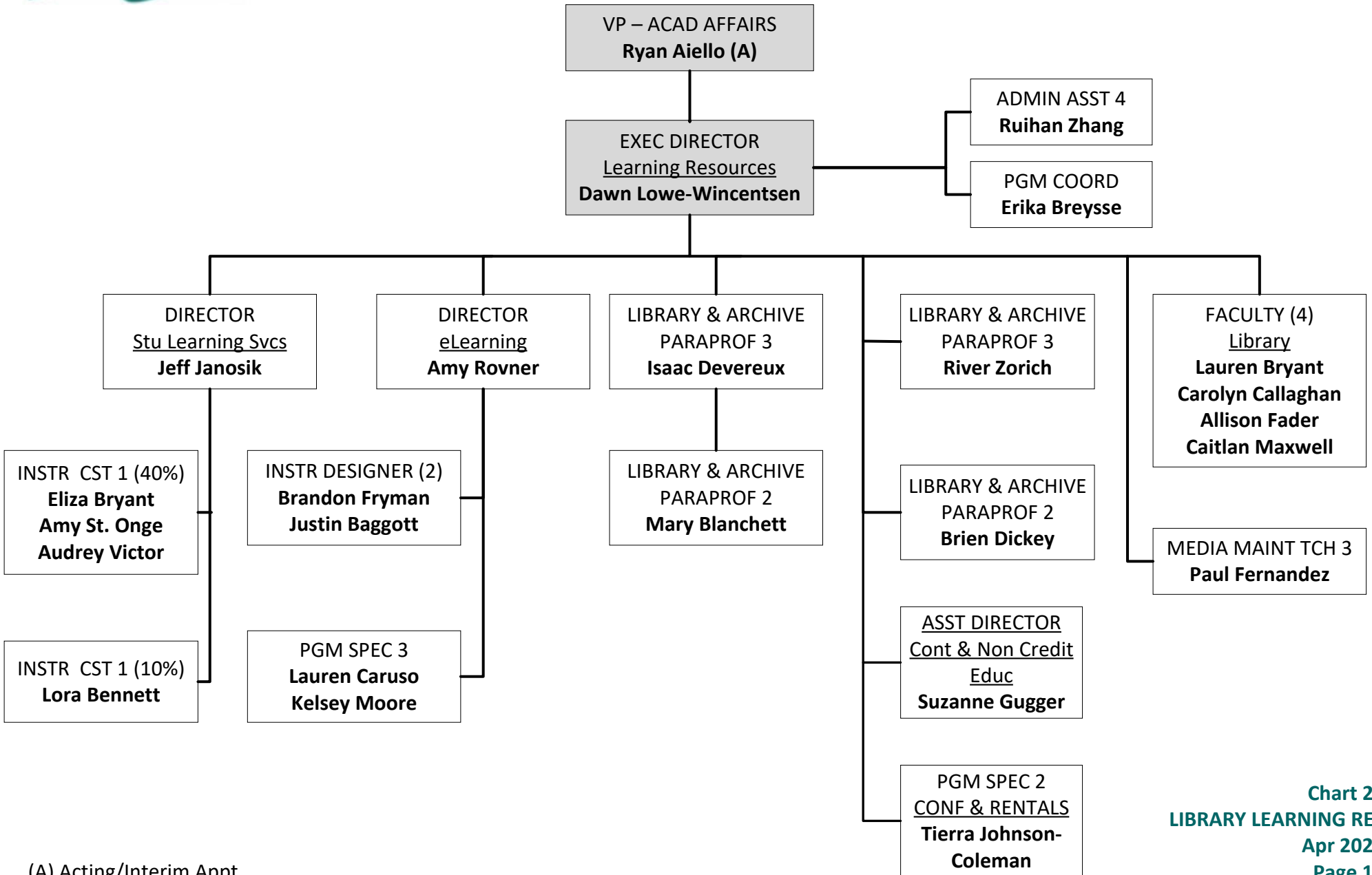
OFFICE of ACADEMIC AFFAIRS
Nursing



- (A) Acting/Interim Appt
- (B) Temp/Grant Funded Appt
- (C) Also supports Dean – CTE
- (D) Program Director



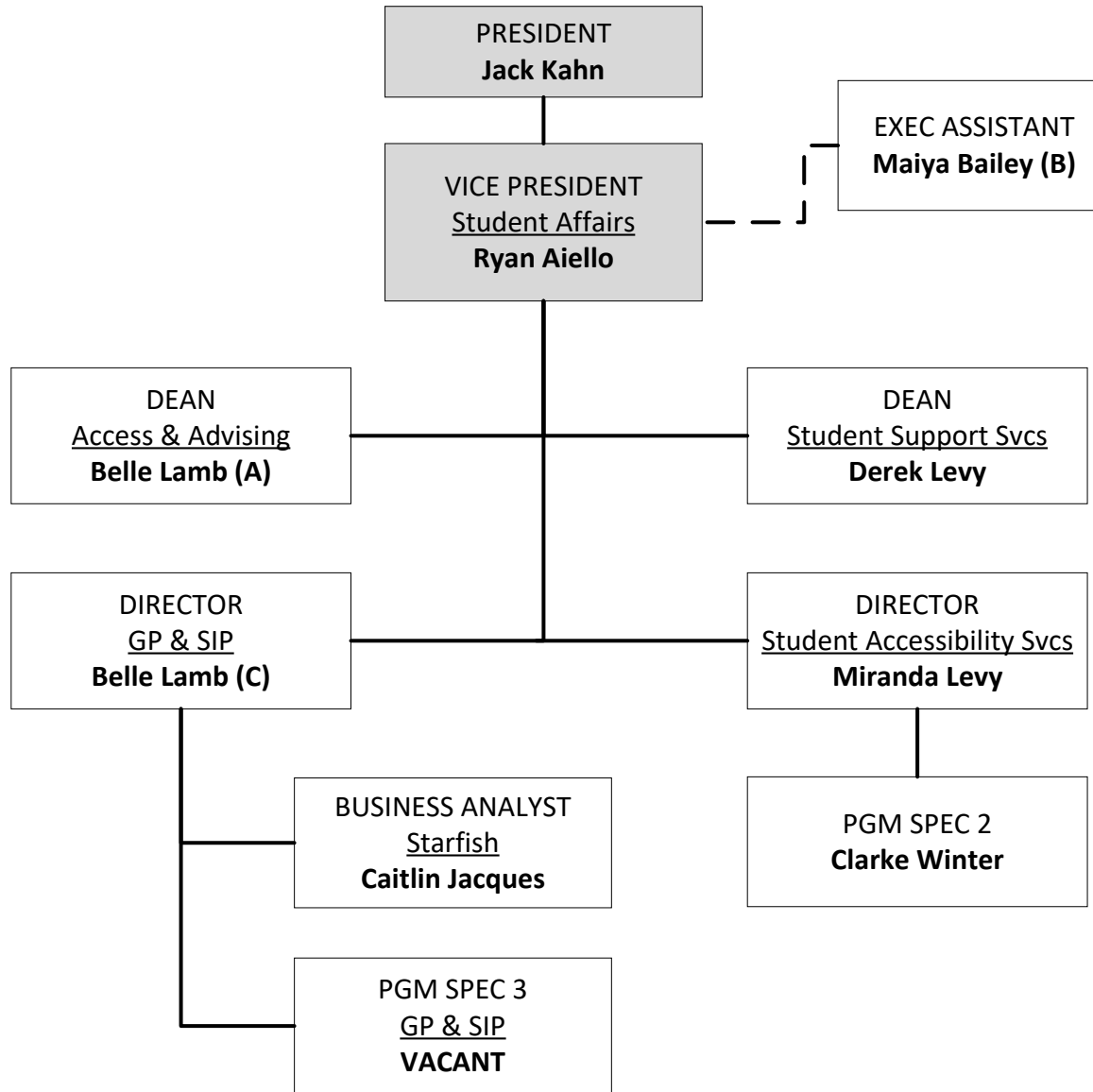
OFFICE of ACADEMIC AFFAIRS
Library & Learning Resources



(A) Acting/Interim Appt



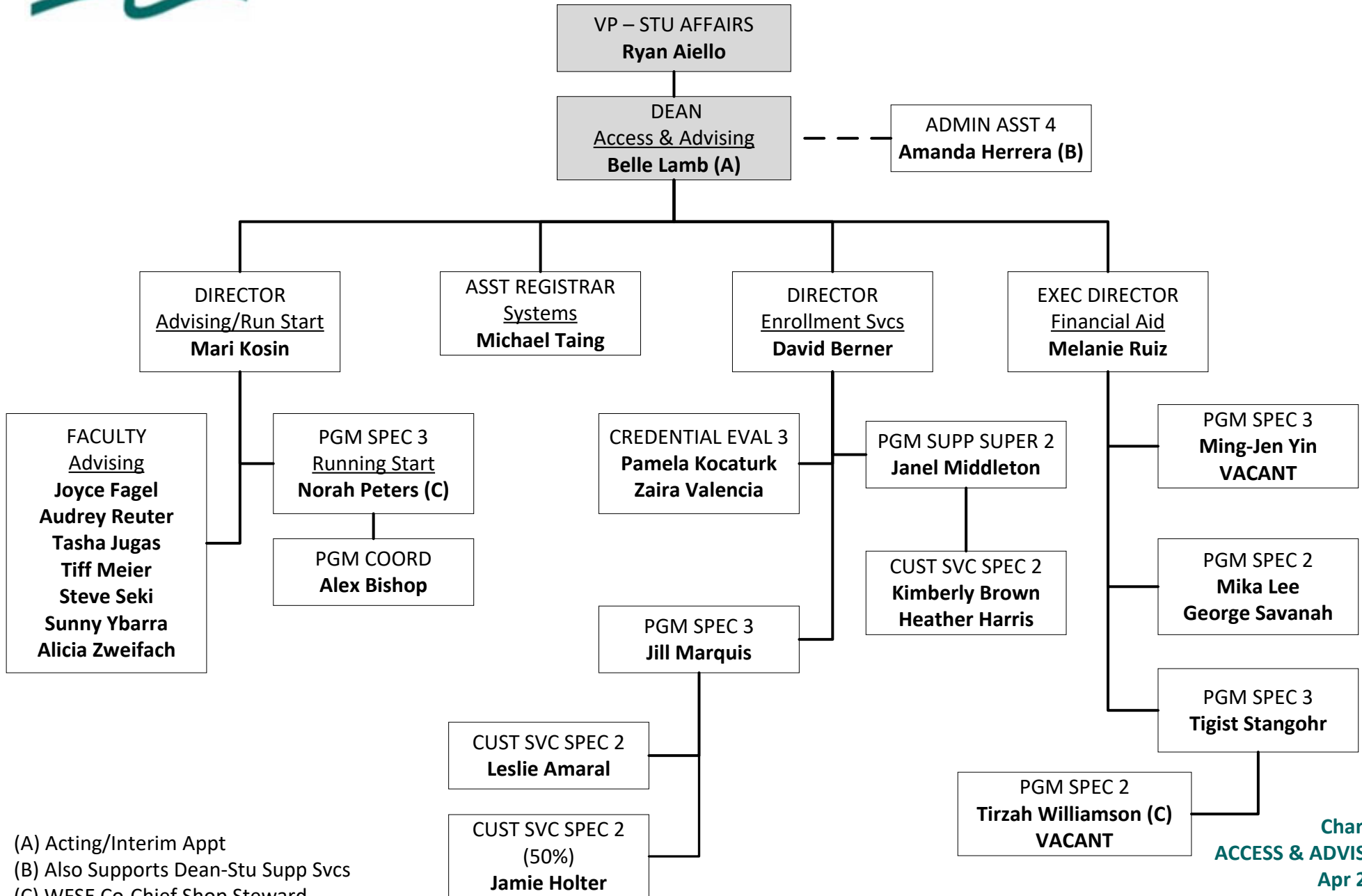
OFFICE of STUDENT AFFAIRS



- (A) Acting/Interim Appt
- (B) Also Supports VP-AA
- (C) Temp/Grant Funded Appt



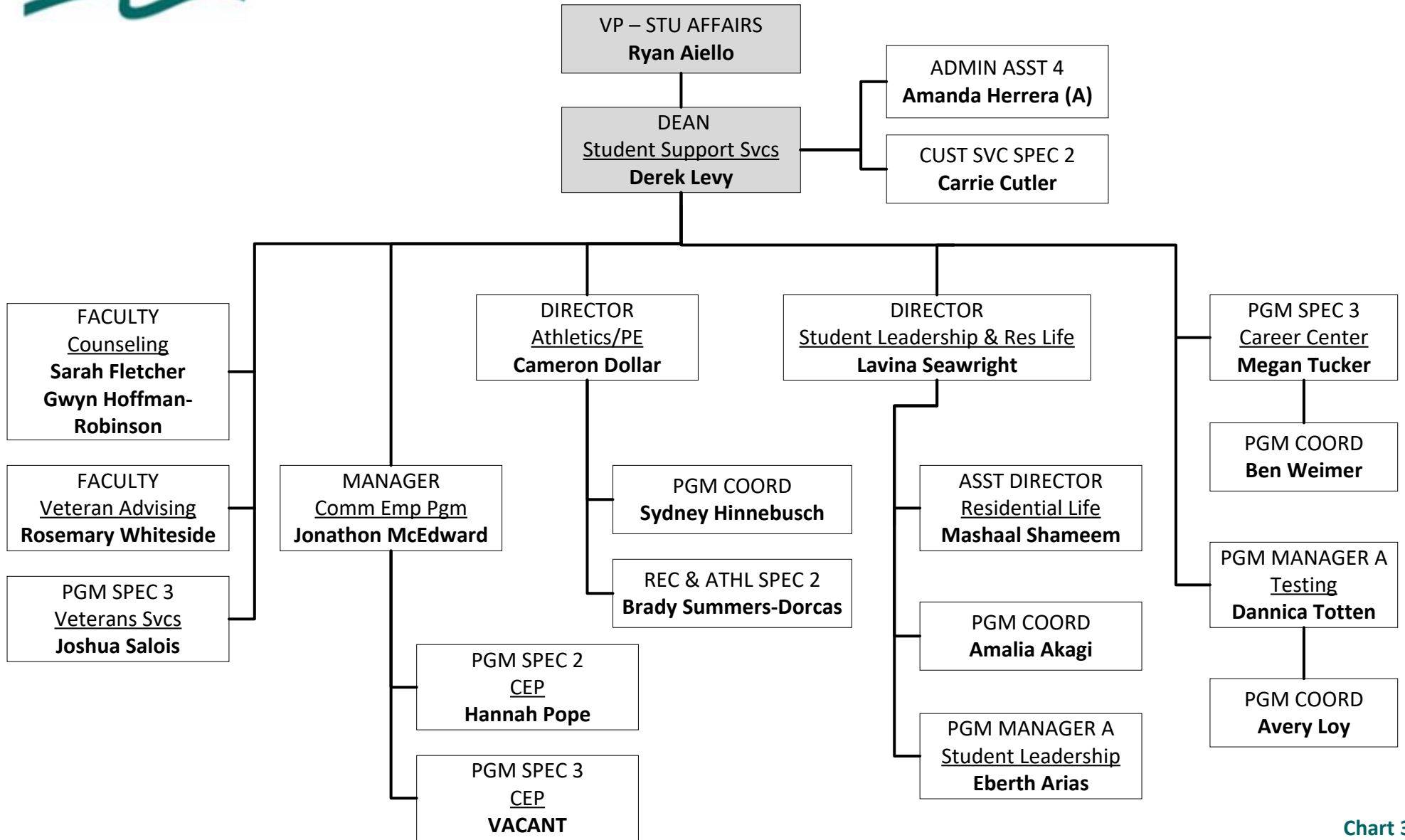
OFFICE of STUDENT AFFAIRS
Access & Advising



(A) Acting/Interim Appt
 (B) Also Supports Dean-Stu Supp Svcs
 (C) WFSE Co-Chief Shop Steward



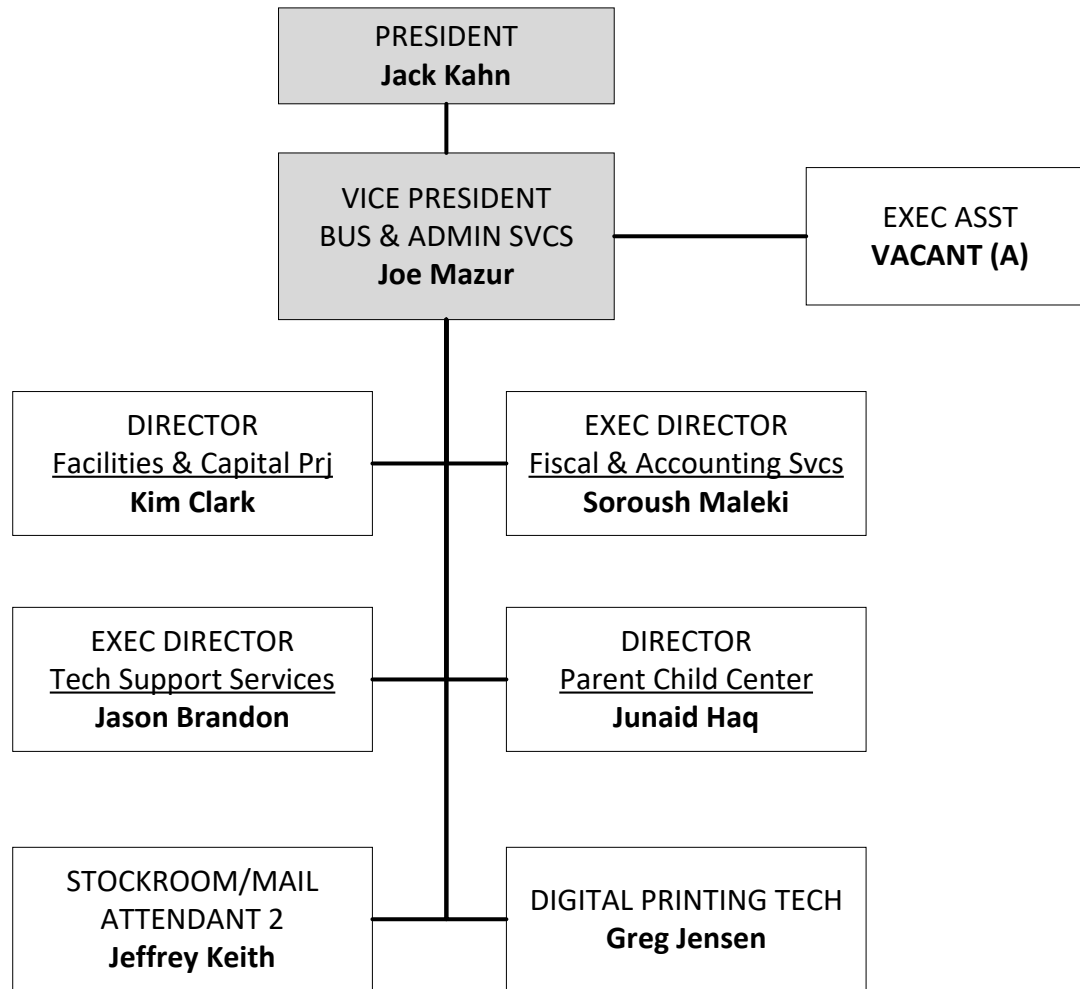
OFFICE of STUDENT AFFAIRS
Student Support Services



(A) Also Supports Dean-Access & Advising



OFFICE of BUSINESS & ADMIN SERVICES

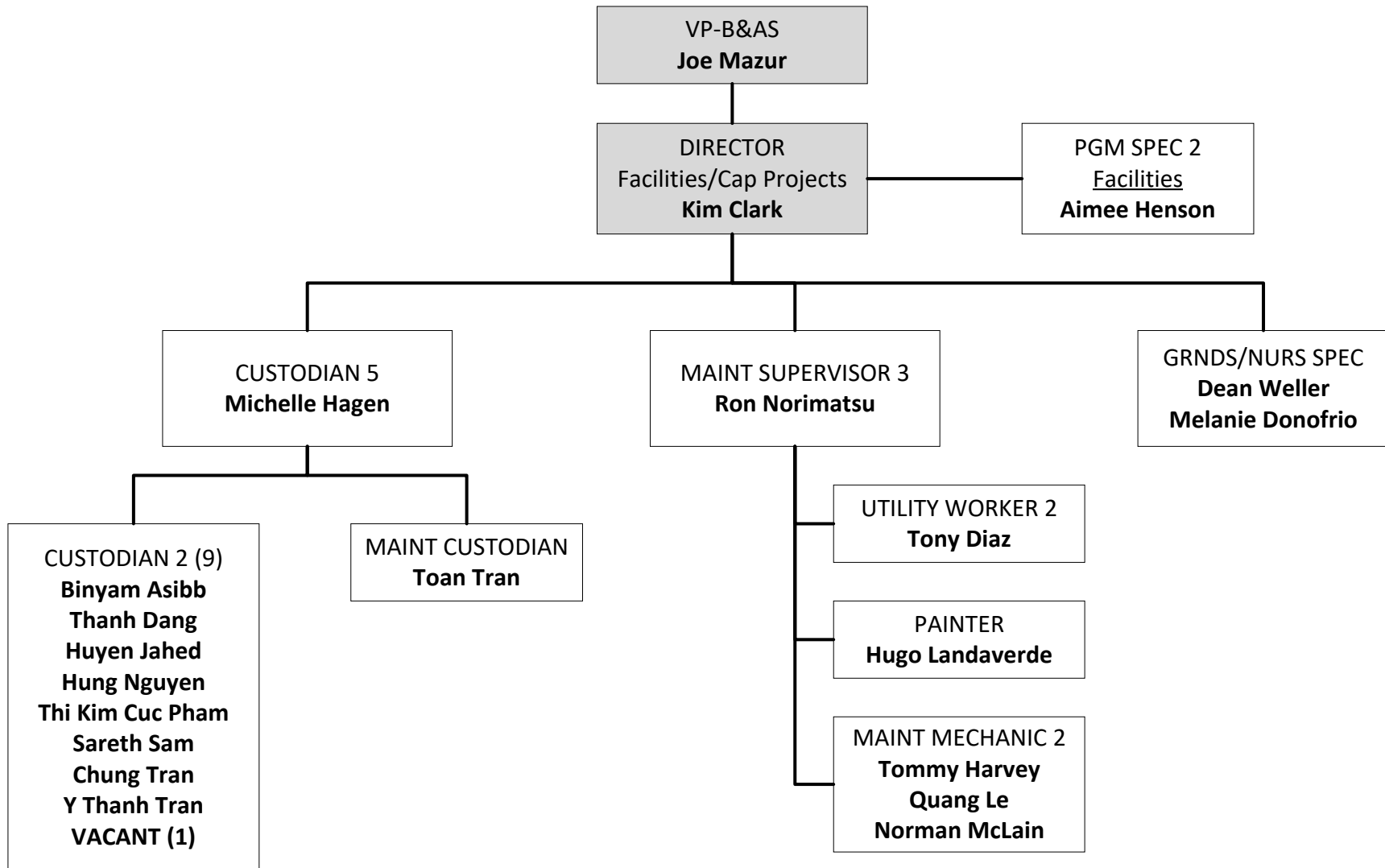


(A) Also Supports ED-HR



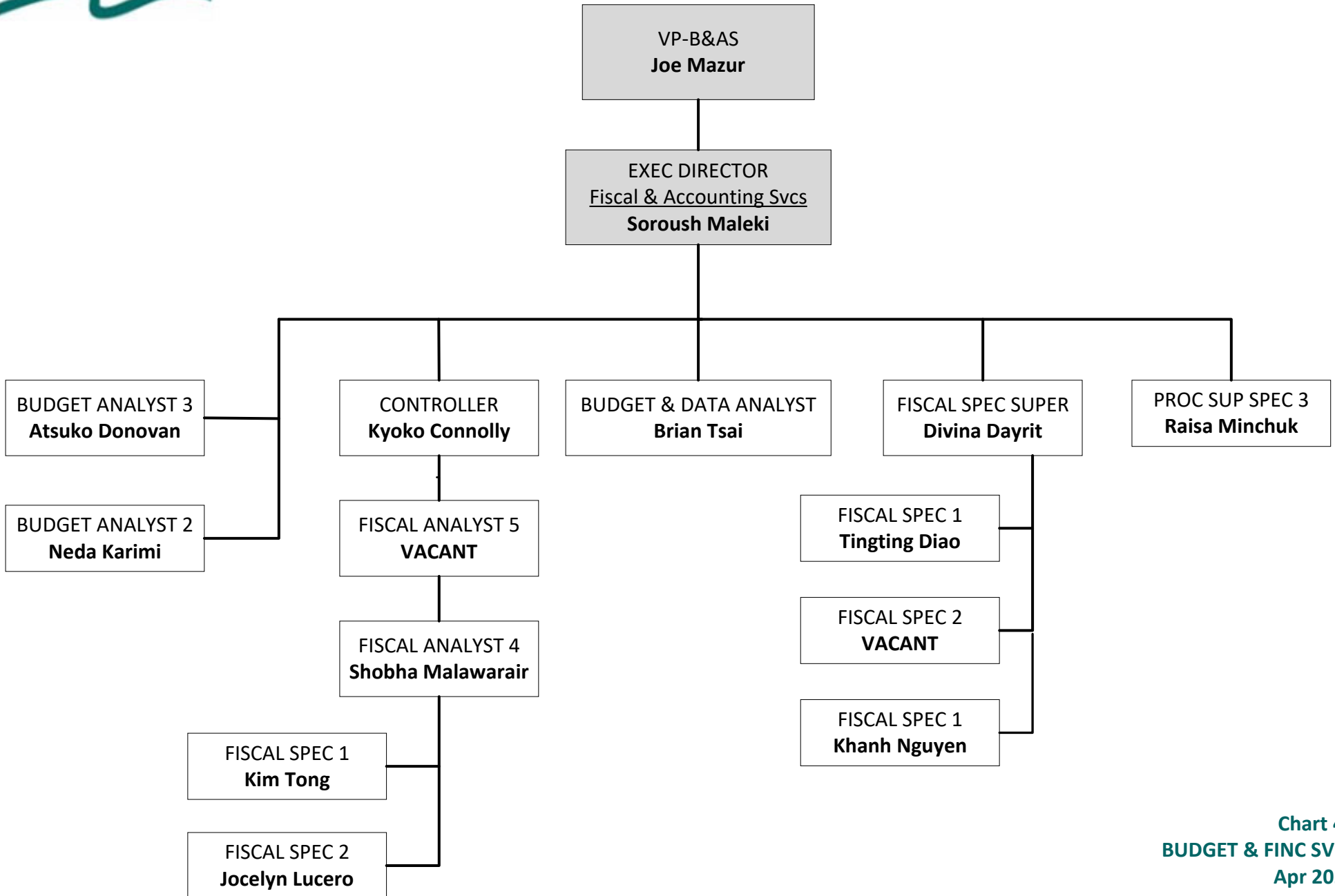
OFFICE of BUSINESS & ADMIN SERVICES

Facilities & Capital Projects



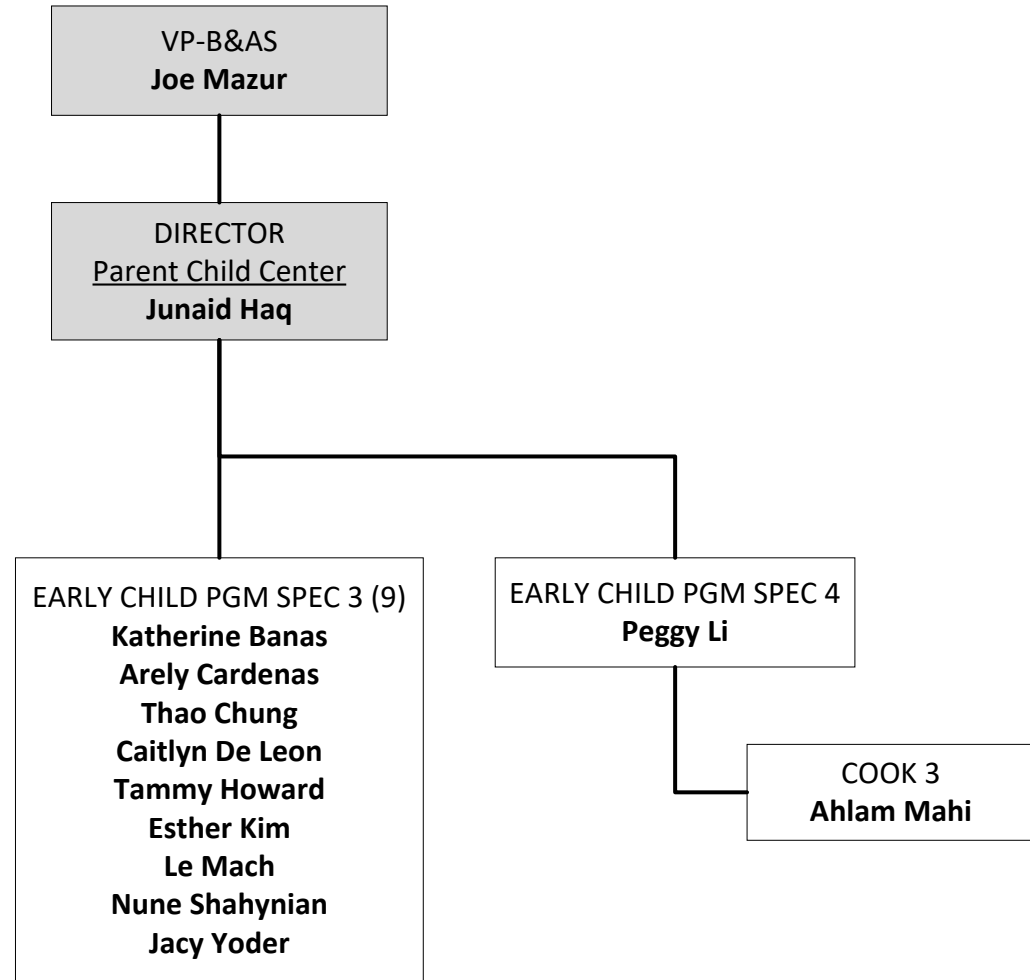


OFFICE of BUSINESS & ADMIN SERVICES
Budget & Financial Services



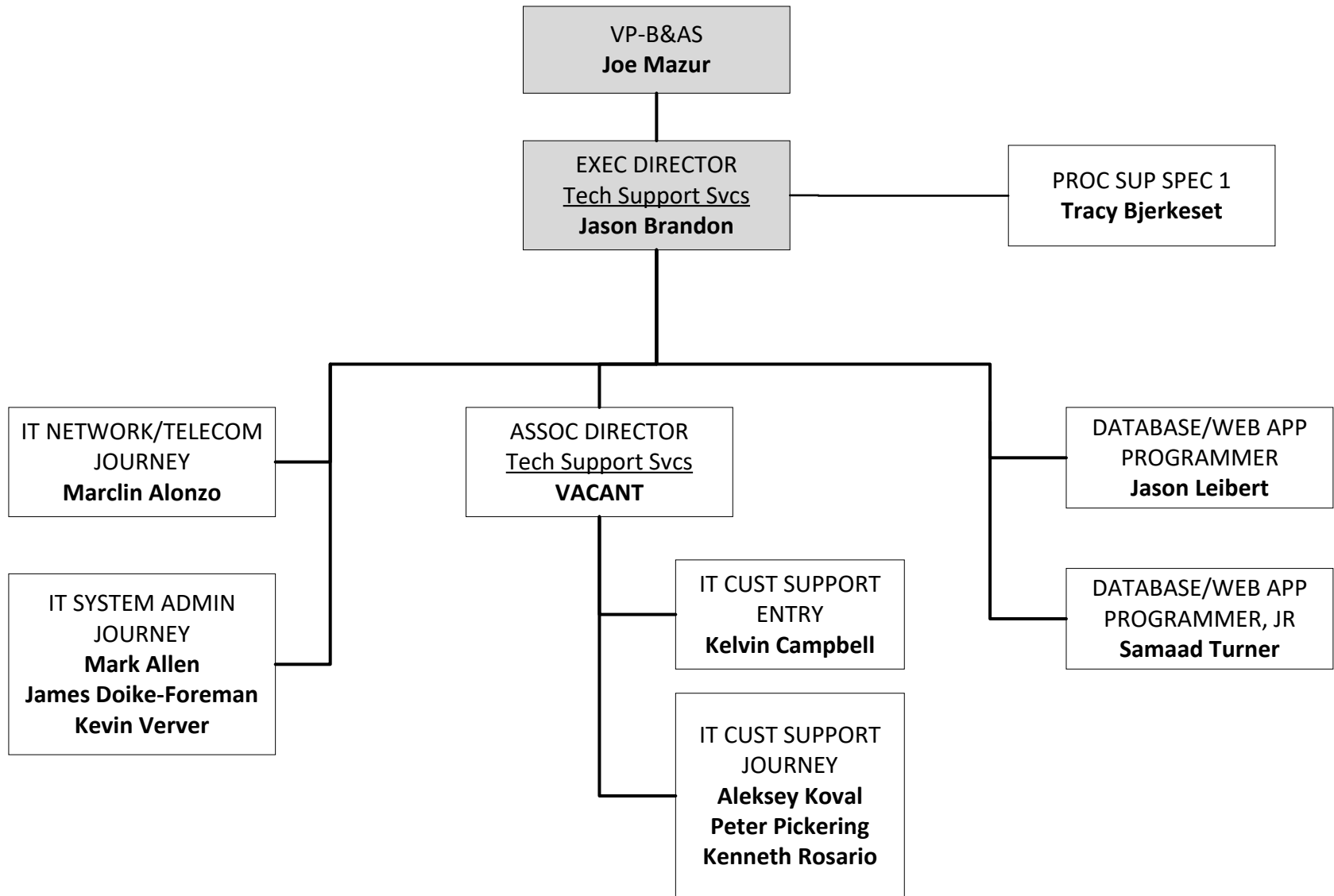


OFFICE of BUSINESS & ADMIN SERVICES
Parent Child Center



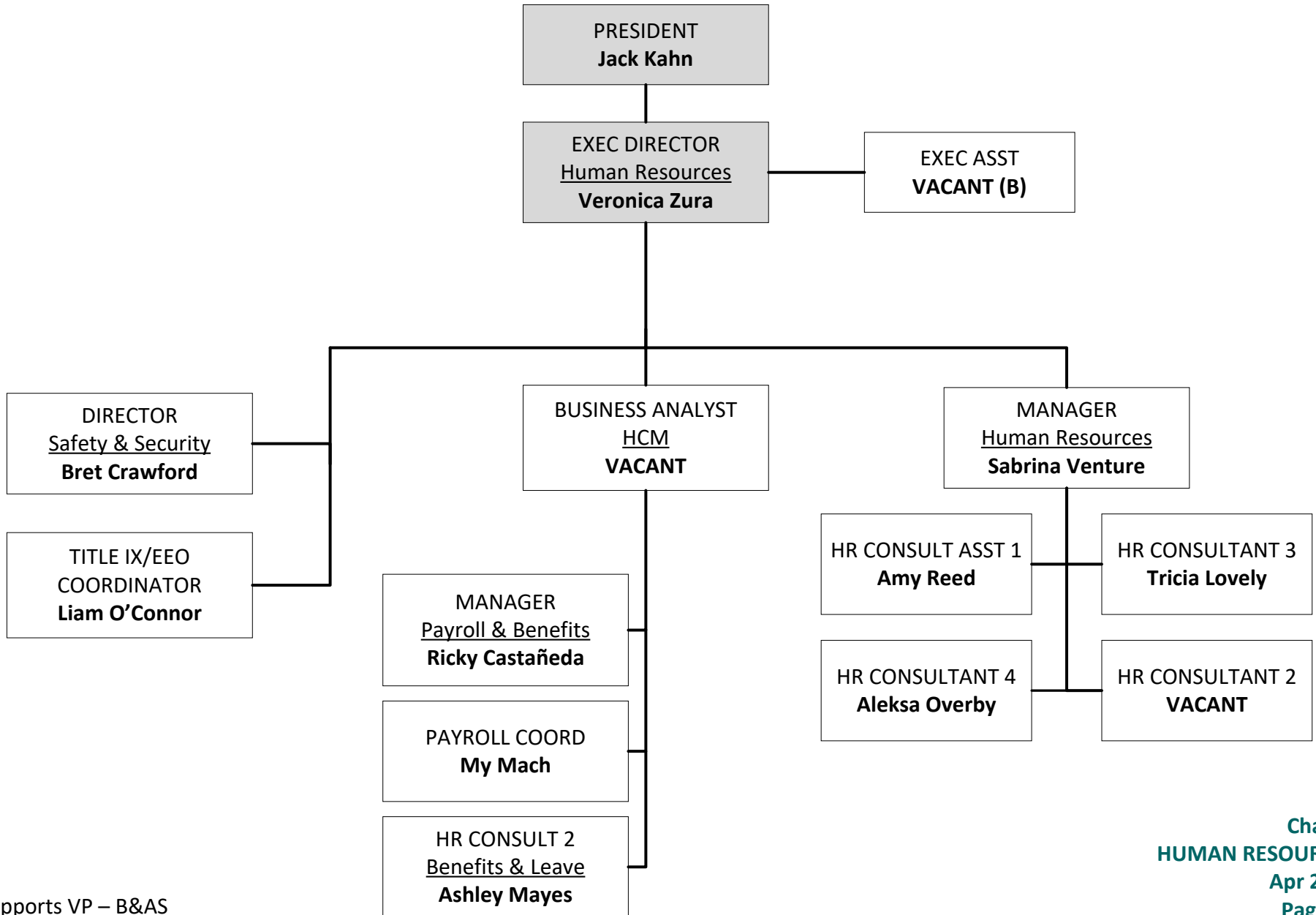


OFFICE of BUSINESS & ADMIN SERVICES
Technology Support Services





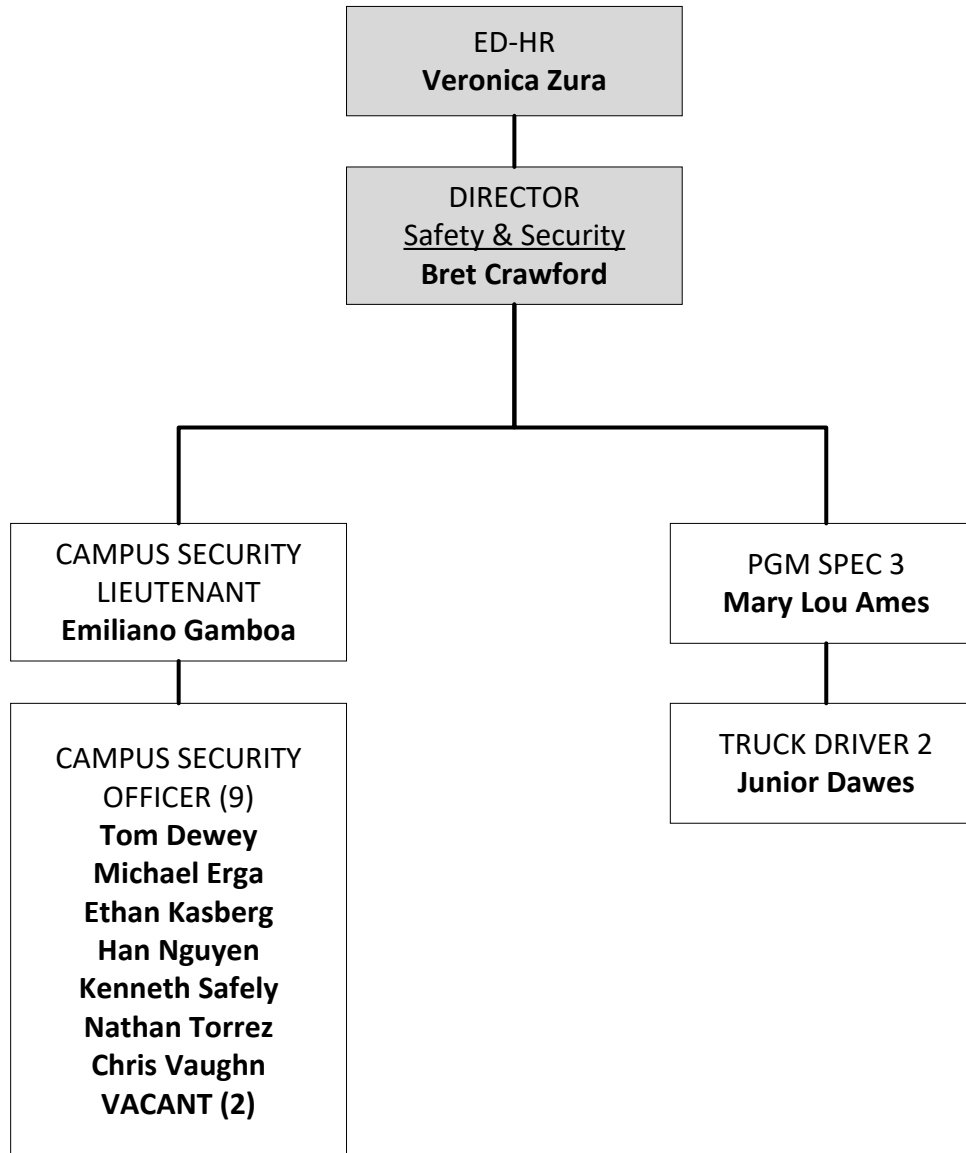
OFFICE of HUMAN RESOURCES

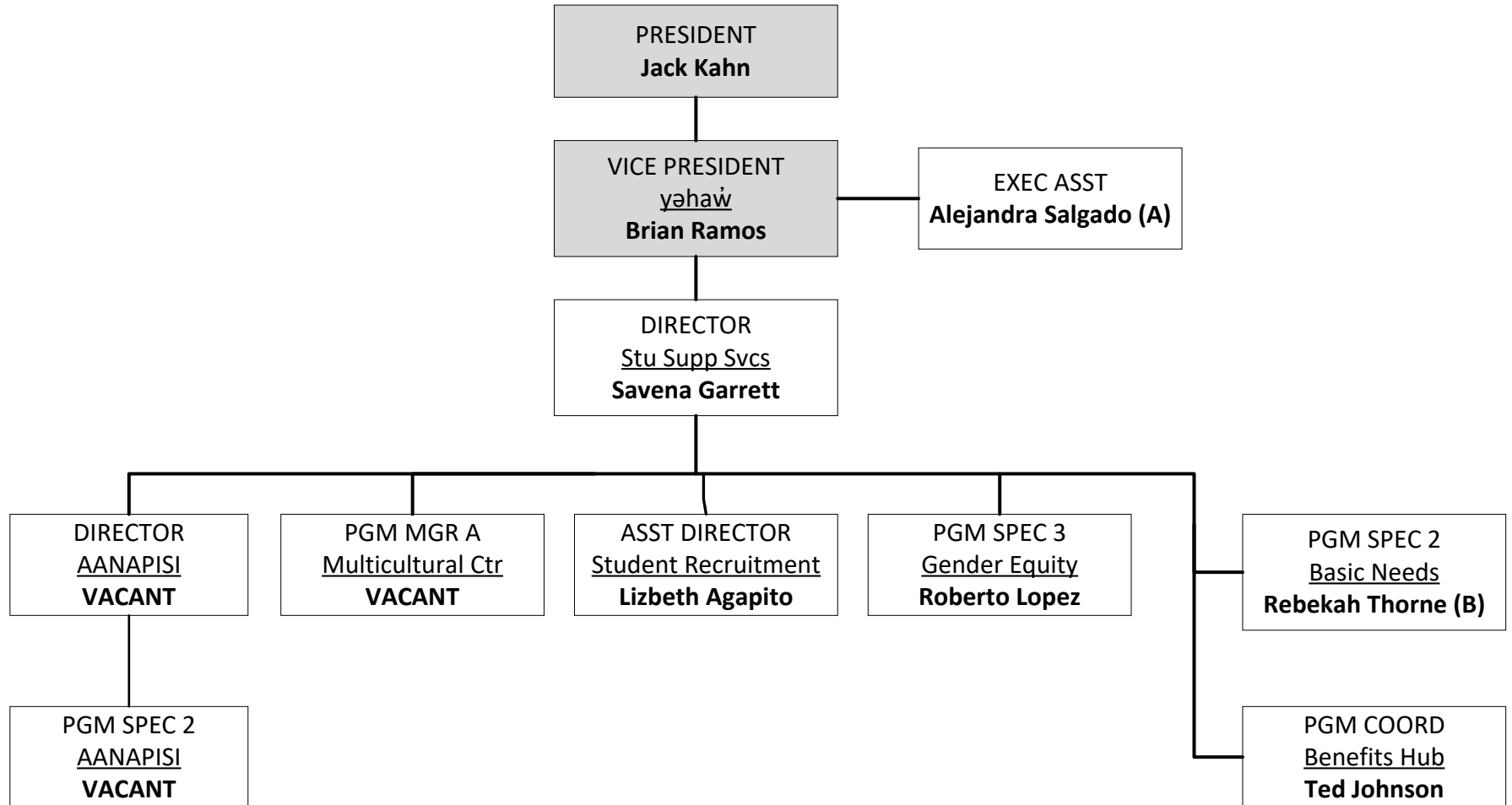


(B) Also Supports VP – B&AS



OFFICE of HUMAN RESOURCES
Safety & Security





(A) Also Supports ED-PIE
(B) Temp/Grant Appt



OFFICE of COMMUNICATIONS & MARKETING

