

Project Overview and Status Update SCC Board of Trustees Study Session  
February 22, 2012

# Student Housing at Shoreline Community College

# SCC Partners

- David X. Lee, CEO of SAL/WAXESS China
  - M.S., Electrical Engineering, Manhattan College
  - Former GM, SALIAE Technology, Beijing/Shenzhen
  - Former director at Uniden and E.F. Johnson
- Marguerite Knutson
  - Licensed broker, Windermere Real Estate/Oak Tree, Inc.
  - BS, Medical Ethics, University of Washington
  - Director-at-Large 2012 Seattle King County Association of Realtors
- Memorandum of Understanding was executed on September 22, 2011



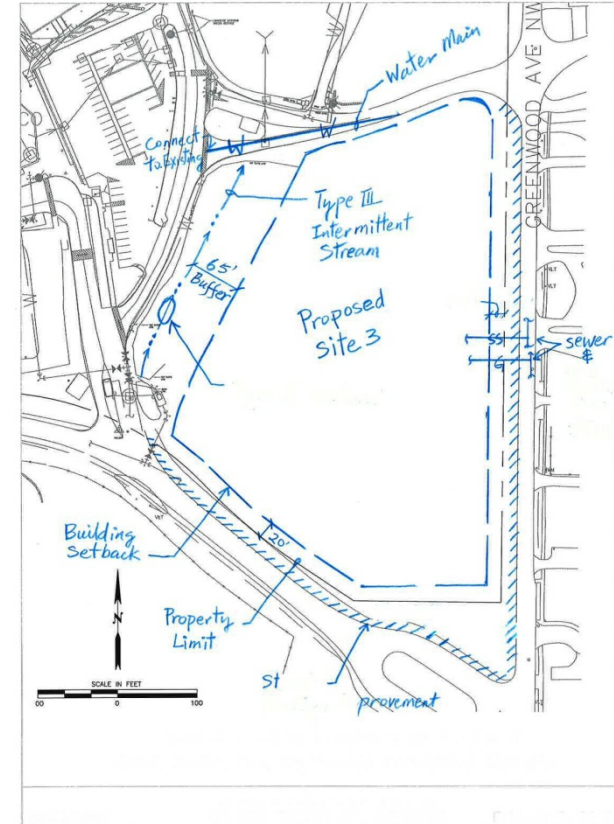
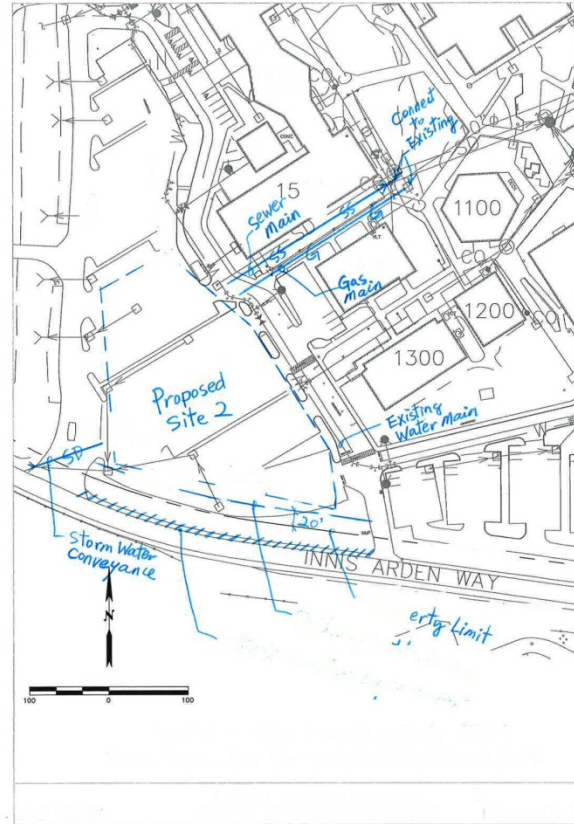
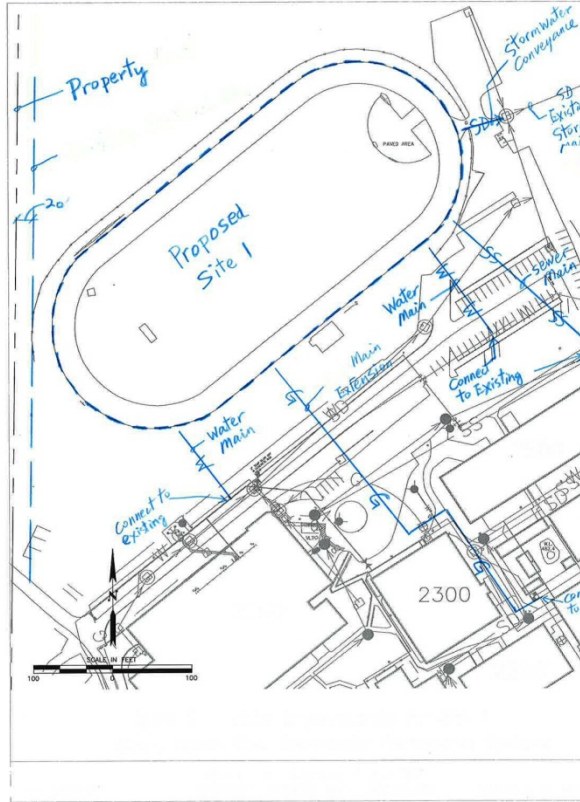
# Anticipated Student Housing Project: Overview

- 400 bed student housing facility, located on Shoreline Community College campus, to include:
  - Underground or adjacent Parking
  - Dining facility
  - Conference, classroom or other programming areas

# Progress

Date	Action
September 2011	Memorandum of Understanding executed
October 2011	Temporary hold on SCC's Master Development Plan (MDP), in anticipation of project
November-December 2011	Research; Investigation; SCC-Partner meetings
January 2012	<ul style="list-style-type: none"><li>• Tour campus to identify 3 potential sites</li><li>• Civil Engineering study: Site Evaluation of Electrical and Telecommunications Systems Impacts</li></ul>
February 2012	<ul style="list-style-type: none"><li>• Received CE Report</li><li>• Partner and SCC selected Site</li><li>• BOT Study Session</li></ul>

# Potential Sites





# Selected Site



# Pending

- Restart the Master Development Plan process with City of Shoreline
- Analyze cost to revise MDP and LRDP
- Commence contract and lease discussions/negotiations
- SCC: Assess and analyze internal organizational impacts, develop Pro-Forma analyses
- Discussions with SBCTC, DES, and others, as needed

# Next Steps

Action	Approximate Date of Completion
Finalize Lease and Contract	April 2012
SBCTC Approvals	April 2012
Final SCC Board Approval and Recommendation to SBCTC	June 2012
Hiring / Bidding process for Architect, Designer, etc.	Summer 2012
MDP Approved	September 2012
Permit Applications submitted	Fall-Winter 2012
Permit Applications approved	Spring 2013
Groundbreaking	Fall 2013



# Additional Considerations

- Role of SCC Foundation
- Responsibility for costs associated with MDP and LRDP revisions
- Notice to the Public
- Other?