

# UNLOCK YOUR BUSINESS POTENTIAL

## WITH CONTINUING EDUCATION

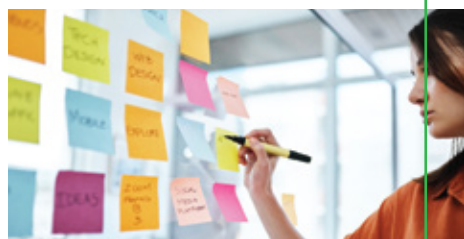
FALL 2025



### Computer Basics: Networks & Internet Safety

Oct 15 - Oct 22 | 6:00 PM - 8:00 PM | On Campus | \$89

Let's explore your home network, its Internet connection, and its many services, discovering how to troubleshoot and secure this valued resource. Beginning and returning students are welcome.



### Project Management

Sep 24 - Dec 11 | Times Arranged | Online | \$259

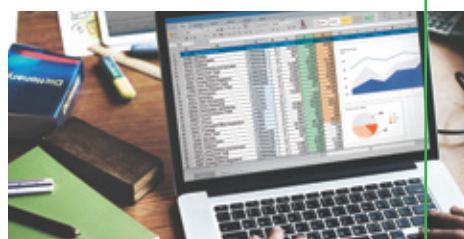
You will learn management concepts, tools, techniques and software to plan, track and assess typical projects. Examine the theory and practice of project management from a managerial perspective. Co-enrolled and can also be taken for academic credit



### Entrepreneurship Starting a New Business

Sep 24 - Dec 11 | Times Arranged | Online | \$259

Develop the skills to create a comprehensive, professional business plan for a new or existing venture. Co-enrolled and can also be taken for academic credit



**Excel I: The Exploration of Spreadsheets:** Sep 24 - Oct 8  
6:00 PM - 8:00 PM | Online \$85

**Excel II: Functions & Plots:** Oct 15 - Oct 29  
6:00 PM - 8:00 PM | Online | \$85

**Excel III: Mastering the Spreadsheet:** Nov 6 - Nov 20  
6:00 PM - 8:00 PM | Online \$85



### Public Speaking for Business & Career

Nov 11 - Dec 9 | 6:00 PM - 8:00 PM | Online | \$129

Whether you're a novice speaker, a seasoned presenter, or somewhere inbetween, this class is for you. You'll advance your speaking skills to a higher level!

These courses are all non-credit.  
Some courses may be taken for academic credit.  
Contact Enrollment Services for more information  
at: [enrollmentservices@shoreline.edu](mailto:enrollmentservices@shoreline.edu)



Register now!

[shoreline.edu/continuing-ed](https://www.shoreline.edu/continuing-ed)



Continuing Education

(206) 546-4538 | [www.shoreline.edu/continuing-ed](https://www.shoreline.edu/continuing-ed)  
16101 Greenwood Avenue N., Shoreline, WA 98133

Shoreline Community College is committed to nondiscrimination. To request this information in an alternate format or for disability accommodation, contact Student Accessibility Services (206-546-4545, [sas@shoreline.edu](mailto:sas@shoreline.edu)) or visit [www.shoreline.edu/accessibility](https://www.shoreline.edu/accessibility).