

SHORELINE COMMUNITY COLLEGE

SURVIVAL GUIDE

2020 - 2021





2020-2021 SURVIVAL GUIDE INTRODUCTION

Welcome to the 2020-2021 Survival Guide for Shoreline Community College!

This guide is intended to help connect students to opportunities, activities, and resources available at the college. For the first time, this year's Survival Guide is fully virtual and interactive. This means that you will be able to navigate through the guide by using the links found in the Table of Contents as well as the "Back to Contents" buttons throughout the guide. In addition, all links included throughout the guide are live and will take you to the web pages and email addresses that will help you find more information about those topics.

Since Shoreline Community College is operating remotely with online classes and services for Fall 2020 and Winter 2021, the information currently included in the guide reflects the ways that these programs and services are operating virtually. If face to face classes and/or services resume for Spring 2021 the guide will be updated at that time to reflect those changes.

scc_studentlife 

Shoreline Community College Student Life 

New Features: Buttons & Links

back to
contents

Back to contents button

CONTENTS

03

Go-to-page button

Linked websites and email addresses

GET INVOLVED



STUDENT LIFE

Student Life offers a variety of engagement opportunities for students, including involvement with Associated Student Government (ASG), the Arts & Entertainment Board (A&E), student clubs, and a broad range of events held throughout the year. Want to get involved? We're here to help!

● Staff



Sundi Musnicki

Director of Student Leadership & Residential Life



Micaela Smith

Program Manager for Student Life



Megan Winter

Assistant Director of Student Leadership & Residential Life



Matthew Ciraulo

Graduate Intern for Student Life

● Associated Student Government (ASG)

The ASG serves as the recognized representatives of the students here at SCC. We are student leaders who provide a student perspective about campus life and the quality of educational programs and services to the college. We also manage your student fees (S&A, SCOF and Tech).

● Arts & Entertainment Board (A&E)

The A&E Board organizes fun events and opportunities for students to engage and build community. This includes dynamic campus-wide programming, supporting student-initiated activities, and providing a range of free services for clubs and programs.

● Employment Opportunities

Each year Student Life hires student leaders to join the Associated Student Government, Arts & Entertainment Board, and Residential Life teams. These positions are usually posted during winter quarter and hiring and elections take place during winter and spring. Student leaders are then trained during the summer and/or fall and serve in their positions for the academic year. Working with Student Life is a great opportunity to meet new people, develop leadership skills, and gain valuable experience!



CLUBS



Most years, Shoreline has dozens of amazing clubs that host engaging activities and events for students. Our clubs focus on a variety of topics including hobbies, cultures/ identities, and career paths. Joining a club is a great way to get involved, meet new people, and gain leadership experience! All students are also welcome to start new clubs and each club gets a baseline budget of up to \$500 per year.

Although we have fewer clubs active while the campus is operating remotely due to COVID-19, clubs are still welcome to host virtual meetings and activities during this time.

✿ For more information, including a list of current active clubs, contact Program Manager for Student Life Micaela Smith at mhsmith@shoreline.edu.



SCC Hiking Club



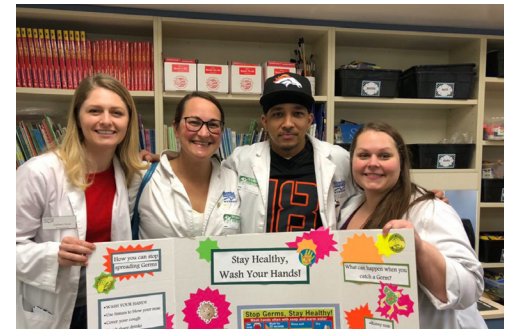
VCT Club



SCC Swimming Club



Yoga and Meditation Club



SCC Association of Nursing Students



SCC Cheerleading



Christian Student Association



INTRAMURAL & WELLNESS ACTIVITIES

FREE Intramural and Wellness Activities for Shoreline Community College Students!

Each quarter Shoreline Community College Intramurals and Wellness offers a variety of free activities and classes to support a healthy lifestyle! Practice and learn strategies to feel your best and support your active lifestyle. All levels are welcome, no experience required! All Intramural and Wellness activities and classes will be offered via Zoom. Check the Intramurals webpage listed below for updates if it becomes safe to offer these in-person.



✿ For a list of our Activities and classes offered, please visit our Intramurals webpage at <https://www.shoreline.edu/athletics/intramurals.aspx> or see the list of activities posted per quarter, on the bulletin boards around campus.

✿ If you have any questions, please email intramurals@shoreline.edu.

PHIN IT TO WIN IT!

ATHLETICS

Athletics SHOW YOUR DOLPHIN SPIRIT!

Shoreline Community College Athletics offers six intercollegiate sports teams. In the fall quarter, we have Women's Volleyball, and Women's Soccer. For winter quarter, we have Men's and Women's Basketball. Finally, for spring quarter we have Men's Baseball and Women's Softball.

Due to COVID-19, we are remote during fall quarter, and Women's Volleyball and Women's Soccer have been postponed until Winter Quarter.

When the college resumes on campus activities, bring your current Shoreline Community College Student I.D to all our home games and you will get in for FREE!

✿ Check out our Athletics website <https://www.shoreline.edu/athletics/> for more details, and updates.



THE HONORS COLLEGE

The Honors College is a close-knit community of highly motivated students who are earning Associate Degrees for University Transfer.

Students enjoy learning in a highly engaged learning environment through in-depth discussions and extraordinary support from faculty and peers. We have designated Honors courses every quarter as well as a Research Track option to pursue a year-long research project with a faculty mentor.



✿ Visit our website:
<http://www.shoreline.edu/honors>

STUDY ABROAD

Want to see the world? Studying abroad as a Shoreline student is the ideal way to broaden your horizons. More than just traveling, studying abroad allows you to dive deep into local cultures and histories with the guidance of experts. And while you're a student, you can use financial aid and apply for scholarships! To learn more about future programs and available scholarships, email us at studyabroad@shoreline.edu!

✿ Follow IE on social media:
Facebook: @SCCinternational
Instagram: @shoreline_international



INTERNATIONAL STUDENT LEADERS

International Student Leaders (ISLs) are a group of student workers in the International Education department. The mission of the ISLs is to help international students achieve cross-cultural experiences and academic success at Shoreline. They hold several events per quarter, which are open to ALL students! They also lead volunteer opportunities throughout the year - applications are usually posted on their Facebook page.

✿ Visit the Facebook page (@ShorelineISL) or send an email to iestudentleaders@shoreline.edu to chat with ISLs about the international student experience, ways to get involved with the community, or how to navigate the campus!



INTERNATIONAL STUDENT AMBASSADORS

International Student Ambassadors ISAs are current international students supporting the outreach and admission staff to communicate with prospective students around the world via email or social media in different languages. ISAs also help the International Education department with other marketing and outreach projects, such as giving campus tours to visitors, translating marketing materials, producing promotional graphics and videos, etc. Please follow our various social media sites!

✿ Contact Linda Du (LDU@shoreline.edu) if you want to share your Shoreline experience globally!

RESOURCES & SERVICES



BENEFITS HUB

Balancing work, life and college isn't easy. That's why United Way Benefits Hub offers one-stop financial assistance and enrollment in benefits, including:

- Help Paying for Financial Emergencies
- Homelessness Prevention
- FAFSA/WASFA Assistance
- Healthcare Enrollment
- Reduced Transit Fare
- Financial Coaching
- Utility Assistance
- Food Resources
- Free Tax Help

✳ Email: benefitshub@shoreline.edu

✳ Schedule an appointment: <https://calendly.com/benefits-hub>

SCHOLARSHIPS & EMERGENCY GRANTS

Shoreline Community College Foundation provides Scholarships and Emergency Grants to students.

- Annual Scholarships
- Quarterly Scholarships
- Emergency Grants



✳ If you are in need of scholarships, please visit:

<https://www.shoreline.edu/foundation/scholarships.aspx>

✳ To begin your application for scholarships or emergency grants:

<https://shoreline.awardspring.com> (Shoreline's online scholarship management tool). It is a great way to be informed about scholarship opportunities and become eligible for scholarship funds.

WORKFORCE EDUCATION

Our office can help you pay for school, find a job and find other resources!

Do you need help paying for school?

We can help pay for tuition, fees, books, parking, or Orca bus passes. Find out if you may qualify for funding by signing up for a Funding Session at startnextquarter.org.

Do you need help with finding a full-time or part time job?

Our career specialist offers online appointments to help with resumes, cover letters and interviewing. This service is open to all students and community members.

Do you want info about childcare, food banks, health clinics, etc.?

We can connect you to community resources so you can focus on school. We partner with Cares of WA, DSHS, WorkSource, Seattle Education Access, Trac Associates, Goodwill, Hopelink and many other great Community Based Organizations.

✳ Phone: 206-546-5882

Email: workforce@shoreline.edu





ADVISING

Advising is a process based on a close student-advisor relationship intended to help students achieve their educational, career, and personal goals through the use of the college and community resources.

An Advisor Can Help You:

- Make a plan to complete degree or certificate requirements
- Register for classes for next quarter
- Determine which academic pathway will help you reach your personal goals
- Navigate your college experience and connect to resources
- Practice decision-making skills to set yourself up for academic success
- Learn about transferring to a 4-year college or university

✿ General Advising: advising@shoreline.edu 206-546-4559

✿ International Student Advising: international@shoreline.edu 206-546-4697



COUNSELING CENTER

The Counseling Center provides free, confidential and professional counseling services, resources, and referrals to support the academic and personal success, health, and well-being of our students and campus community. Students often visit the Counseling Center to discuss a wide variety of topics: depression, anxiety, relationship concerns, and stress management; indecision about major or career path; and academic concerns such as failing grades, struggling with a subject, or managing a learning disability. The Center also supports students who may be feeling suicidal or in crisis.

The Counseling Center is currently under remote operations and will continue to meet with students online, using a telehealth platform called SimplePractice. SimplePractice is a platform similar to Zoom that specifically conducts online video sessions with a Counselor. It can be accessed by either a smart phone (with assistance from the SimplePractice client app) or a laptop. It is completely confidential and does not require a program download when accessed from a laptop.

✿ Please call 206.546.4594 to schedule a telehealth appointment with a Counselor. We look forward to speaking with you!

✿ Website:
<https://www.shoreline.edu/counseling-center/>

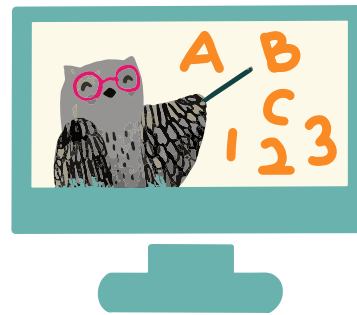


TUTORING SERVICES

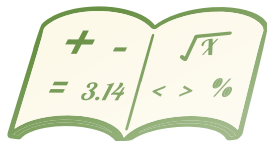
All Shoreline Community College students are eligible for **FREE tutoring for any Shoreline class you're taking for credit**. Our one-on-one tutors provide weekly, personalized help with your coursework. We also offer drop-in learning centers for Biology & Chemistry, Physics, and Computer Science & Engineering.

✳ For more information, to request a one-on-one tutor, or to apply to work as a tutor, check out our web page: www.shoreline.edu/tutoring.

✳ Location: Library 4228
Email: pttutors@shoreline.edu



MATH LEARNING CENTER



The Math Learning Center (MLC) provides **free math tutoring for SCC students**. The MLC is currently operating online while Shoreline is doing remote operations due to COVID-19. Students can sign up for a virtual appointment at <https://shoreline.mywconline.com/>

When on campus, the MLC is located in room 4213 and supports students in MATH 070 through MATH 264. No appointment is needed. Our tutors work with students one problem at a time, involving students in the learning process to promote increased understanding of the concepts. When students are not working with tutors, they can use the space to work on their math coursework individually or in groups.

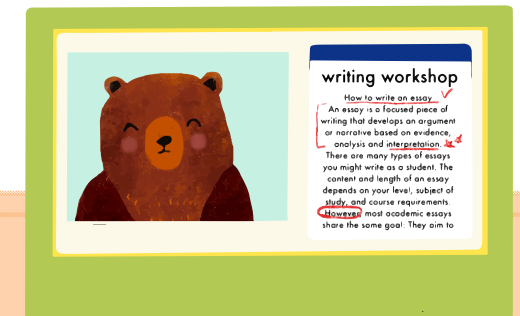
THE WRITING & LEARNING STUDIO

The Writing & Learning Studio supports all Shoreline students with every **area of the writing and reading processes**. Writing and reading are social acts and, as such, it just makes sense to work in a collaborative setting to ensure meaning is being conveyed and received clearly and effectively. Tutoring is also a way to pursue and measure long-term growth, so get support early and often! The more often you use our services, the more you will be able to see your own success.

Normally we provide support via in person and online tutoring sessions, and through our quarterly workshops. While campus is in remote operations due to COVID-19, we are offering online tutoring through WOnline, allowing students to schedule both video tutoring sessions as well as written feedback on submitted writing.

✳ Schedule an Appointment: <https://shoreline.mywconline.net/>
Website: www.shoreline.edu/twls

✳ Location: Library 4301
Phone: 206-546-7663



STUDENT SUPPORT

MULTICULTURAL CENTER

The Multicultural Center engages the entire campus community to create a climate of inclusion, social justice, equity, and access for underserved students and develops programs that support student success and transforms the college community.

We offer lectures, workshops and special events that are designed for students and campus community members to develop and enhance their multicultural awareness, knowledge, and skills. Past events include the Students of Color Conference, Shoreline brother of color events, affinity group snack n' chats, as well as, our annual Martin Luther King Jr. recognition and Multicultural Weeks. We will work one on one with you to facilitate your success at Shoreline such as providing short-term loans and accessing resources and opportunities on and off campus.



✿ To learn more about the center and our events join our Facebook Page:
<https://www.facebook.com/ShorelineMulticultural/>

✿ Or visit our website with loan application and more:
<https://www.shoreline.edu/multicultural/default.aspx>

✿ Join us during one of our weekly drop-in hangout sessions to meet others and find out about how we can support you while here at SCC:
<https://us02web.zoom.us/j/85346333000>



GENDER EQUITY CENTER

The Gender Equity Center is new this year! We work with the other student services to provide safe, supportive, welcoming spaces for students and staff with a focus on Lesbian, Gay, Bisexual, Transgender, Gender Non-Conforming, Asexual, Queer, and similarly identified communities.

We provide programming, community building, and support for any needs related to gender and sexuality. This programming varies and includes topics like Gender-Inclusive Sex Education, LGBTQ+ speakers, support for sexual assault survivors, LGBTQ+ basics, movie nights, and game days.



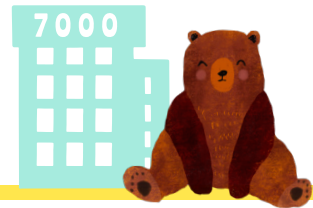
The Gender Equity Center also oversees the Benefits Hub and the Emergency Aid Program. The Emergency Aid Program provides funding to students with sudden, unforeseen emergency needs that might prevent them from being successful in school. Email emergencyaid@shoreline.edu with any questions regarding Emergency Aid.



✿ To learn more, please find our website or CANVAS page (coming soon!).
<https://www.shoreline.edu/gender-equity-center/>

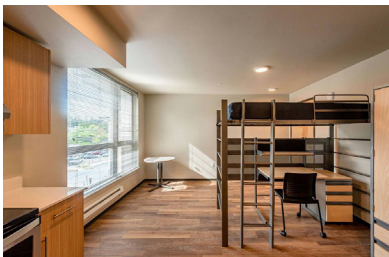
ADDITIONAL INFO

7000 CAMPUS LIVING



Shoreline Community College is excited to offer students a home away from home in their new residence hall, 7000 Campus Living!

Students can choose from studio, 2, and 4 bedroom units and enjoy fully furnished, all-utilities included convenience just a few steps away from classes and campus resources. With 24-hour staff support, students will have the opportunity to contribute to a vibrant community through building events that promote engagement and entertainment.



- ✦ For more information and a virtual tour: <https://7000campusliving.com/>
- ✦ e-mail: hello@7000campusliving.com

STUDENT ACCESSIBILITY SERVICES

If you are a student with a disability, you may be eligible to receive reasonable accommodations to help you succeed at Shoreline Community College. State and Federal laws, as well as college policy, prohibit discrimination of students on the basis of learning, physical, and psychiatric disabilities. These laws state that colleges are obligated to provide reasonable accommodations and equal access to students with disabilities.

- ✦ Please visit our webpage at <https://www.shoreline.edu/student-accessibility-services>
Phone: 206-546-4545 Email: sas@shoreline.edu

CURRENT STUDENTS PAGE

Available via a link at the top of every shoreline.edu webpage, the 'Current Students' page is your online one-stop shop to all of the key information and links you'll need during your time as a student.

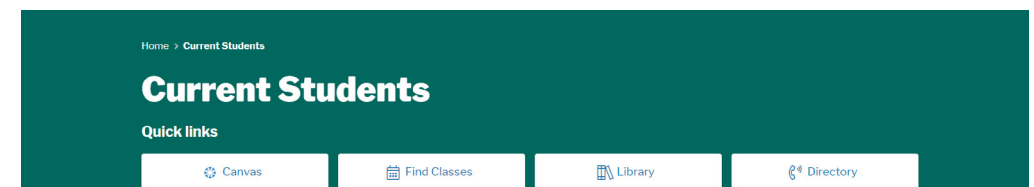
The provided links to services across campus, as well as the built-in calendar, will help you find information about any resources, events, or activities that you may be interested in.



Planning your courses, registering for classes, and paying your tuition every quarter is a breeze with the Registration & Payment section.

Get involved and stay connected to all Shoreline events and happenings with links to club information, intramural/wellness activities, the campus events calendar, and more!

- ✦ Please take a moment to start exploring this page now and save it to your "favorites" : shoreline.edu/currentstudents/

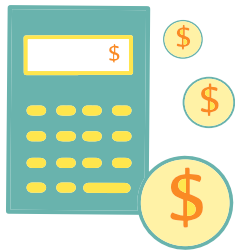


STUDENT FEES

The Associated Student Government (ASG) oversees 3 student-paid fees: the **Services and Activities fee**, **Sustainability and Commuter Options Fee**, and the **Student Technology fee**. These fees are overseen by student-led committees consisting of ASG leaders and advised by faculty and staff representatives. In addition, students also pay a fee for the Pagoda Union Building.

These fees provide services and opportunities around campus that enhance the out-of-classroom experience for all Shoreline students. Learn more below about what each fee supports.

● Services & Activities Fee



The S&A fee is folded into tuition and is the primary source of funding for many programs and all clubs on campus. It helps pay for programs like Student Life, Tutoring, the Multicultural Center, Athletics, Theater, the Parent Child Center, the Ebbitide newspaper and more!

Fee Amount: \$11 per credit up to 10 credits, \$5.85 per credit for credits 11-15

● Sustainability & Commuter Options Fee (SCOF)

SCOF covers transportation costs (such as the shuttle and subsidizing bus passes) and is used to pay for sustainability projects on campus like the water bottle refilling stations.

Fee Amount: \$30 per quarter



● Student Technology Fee

The tech fee helps pay for technology on campus including computer labs, campus wi-fi, the laptop loan program, the school's LinkedIn Learning subscription, and more.

Fee Amount: \$4.40 per credit, max of \$44 per quarter

● Pagoda Union Building (PUB) Fee

In 2001, this fee was enacted to help fund construction costs of the new Pagoda Union Building (PUB). The fee now collects funds to continue making mortgage fees for the PUB. The remodeled PUB (Pagoda Union Building) opened for students and the community in 2008. The building houses the SCC bookstore, post office, Ebbitide student newspaper, International Education, Multicultural Center, and the Student Life Office. Student and community amenities include a quiet study lounge, gathering spaces, meeting rooms, two dining areas and a game room.

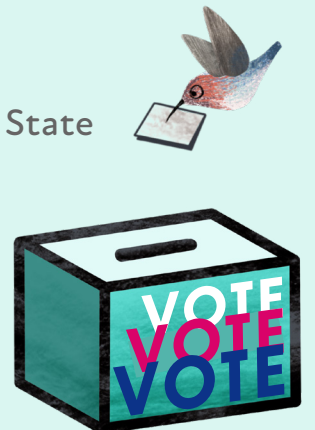
Fee Amount: \$4.40 per credit, max of \$52.80 per quarter

LET YOUR VOICE BE HEARD!

Voter Registration Deadline for Washington State

- Online: Oct. 26
- By mail: Received by Oct. 26
- In-person: Nov.3

REGISTER ONLINE: <https://olvr.votewa.gov/>





SOCIAL MEDIA PAGES

Follow these social media pages to get involved and engage with your fellow Phins, for important campus updates, as well as fun posts and contests!



Shoreline Community College Main Accounts:

-  shorelinecollege
-  Shoreline Community College
-  @shorelinecc



Student Life:

-  scc_studentlife
-  Shoreline Community College Student Life



International Education:

-  shoreline_international
-  Shoreline Community College-International



Multicultural Center:

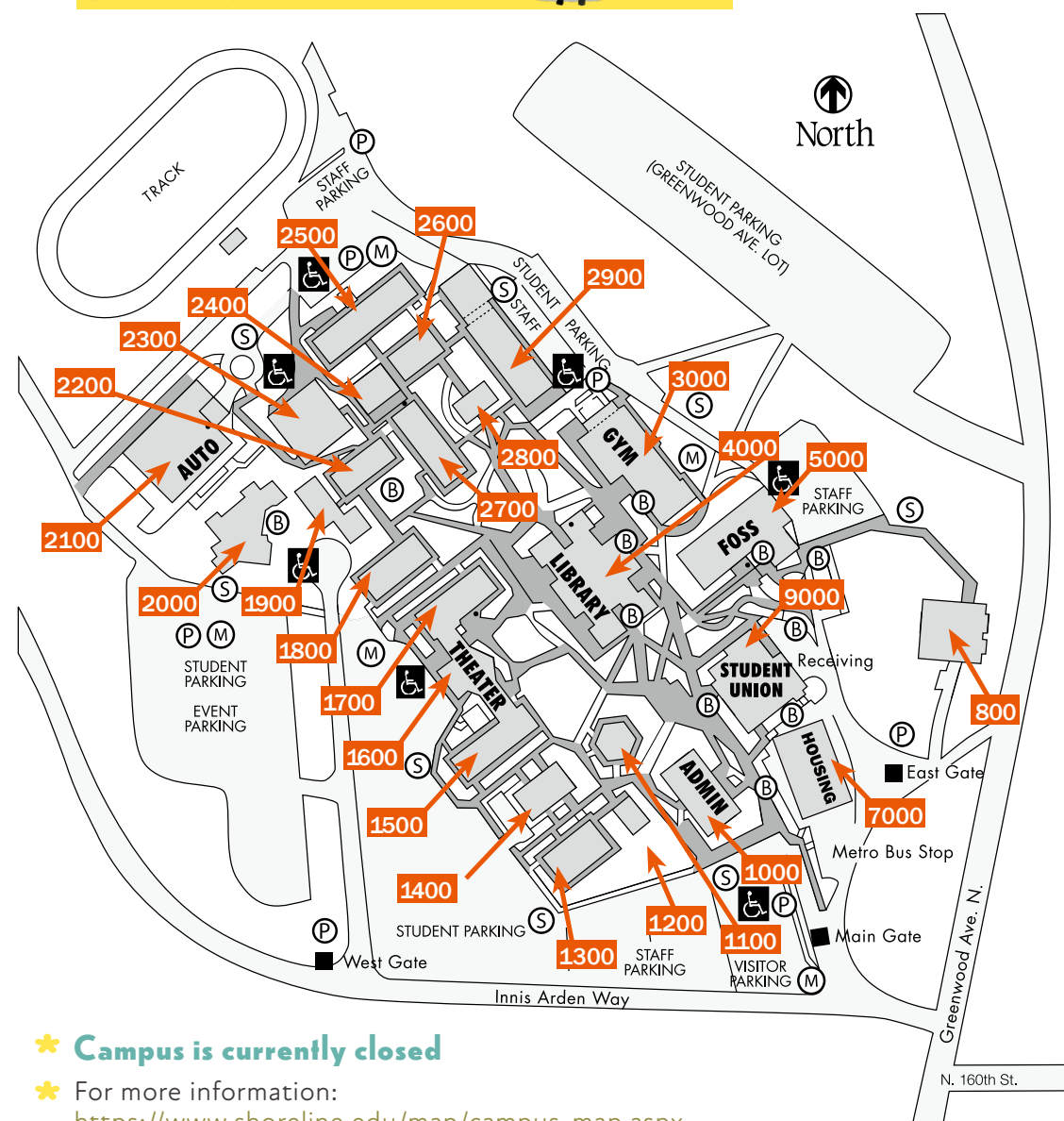
-  multiculturalssc
-  Multicultural Center at Shoreline Community College



Gender Equity Center:

-  genderequityssc
-  Shoreline Community College Gender Equity Center

CAMPUS MAP



* **Campus is currently closed**

* For more information:
<https://www.shoreline.edu/map/campus-map.aspx>



Created by

STUDENT LIFE
SHORELINE COMMUNITY COLLEGE

Designed by

AHRAN WON & MIKA TZU LEE

Shoreline
COMMUNITY COLLEGE

