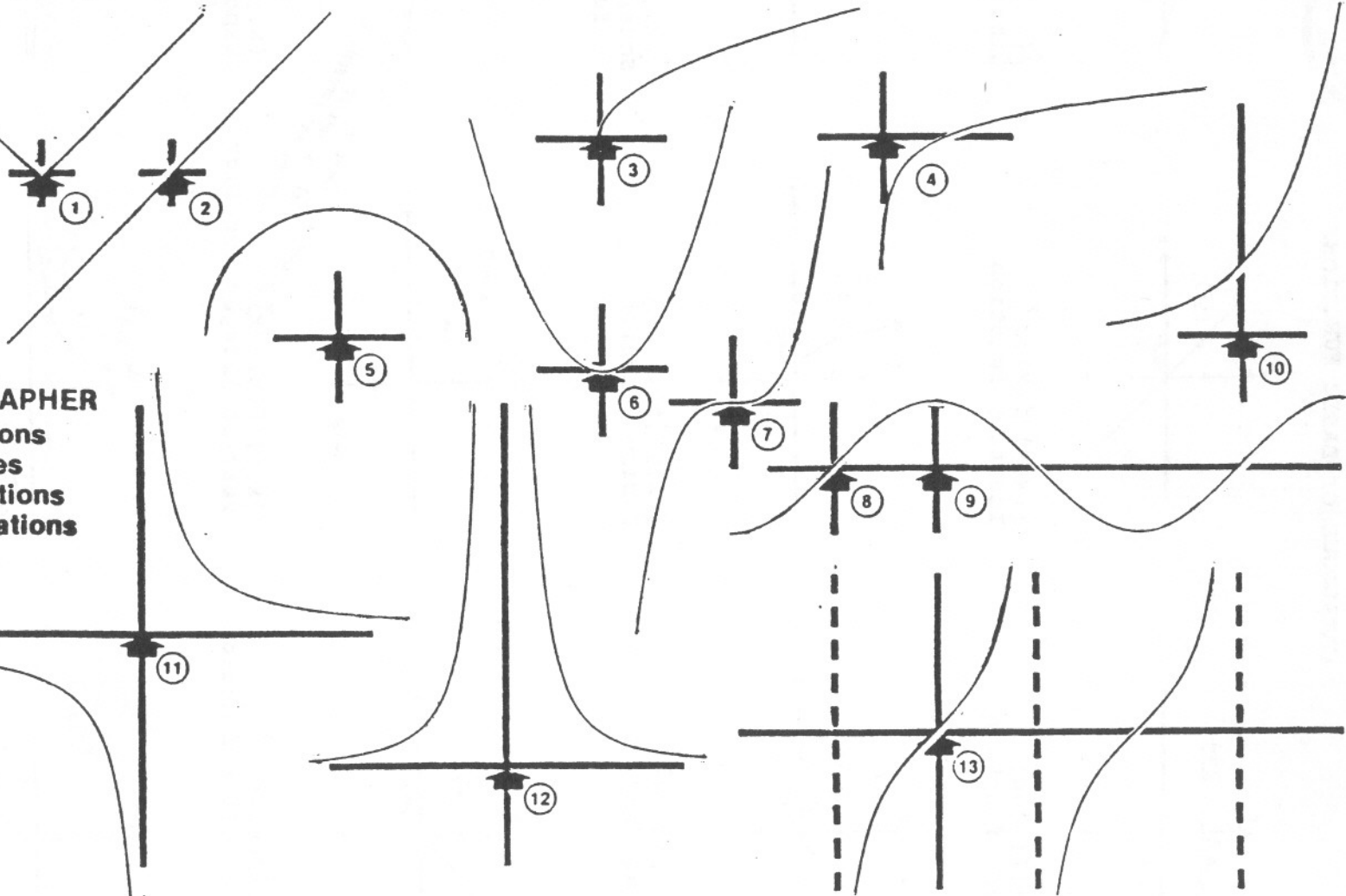


CM 0 1 2 3 4 5 6 7 8 9 10 11 12 13 14 15 16 17 18 19 20 21 22

EASY GRAPHER
Functions
Inverses
Reflections
Translations



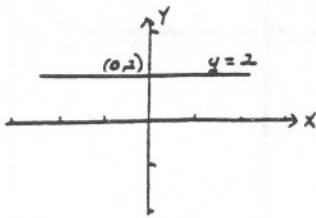
© 1983 by Dynamic Educational Materials • P.O. Box 1176 • Woodinville, Washington 98072-1176



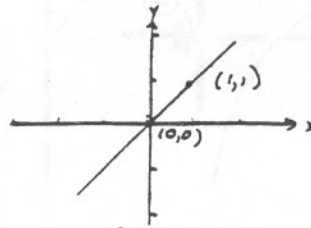
CREATED BY LARRY RUNYAN



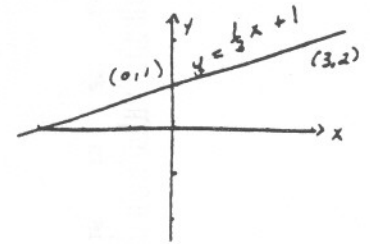
CATALOGUE OF BASIC FUNCTIONS



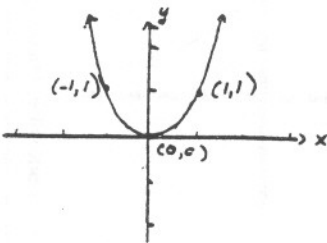
$\{(x, y) | f(x) = c\}$
Constant function



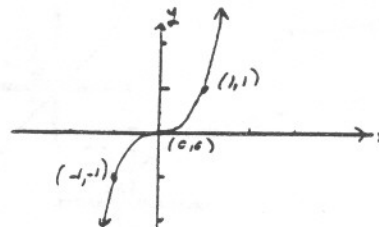
$\{(x, y) | f(x) = x\}$
Identity function



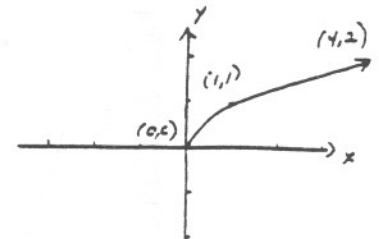
$\{(x, y) | f(x) = ax + c\}$
Linear function



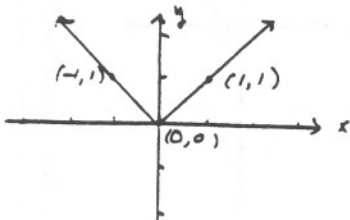
$\{(x, y) | f(x) = x^2\}$
Squaring function



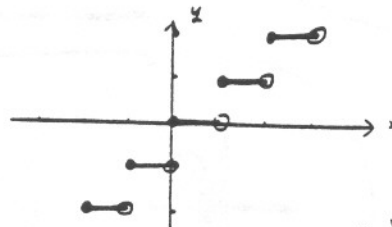
$\{(x, y) | f(x) = x^3\}$
Cubing function



$\{(x, y) | f(x) = \sqrt{x}\}$
Square root function

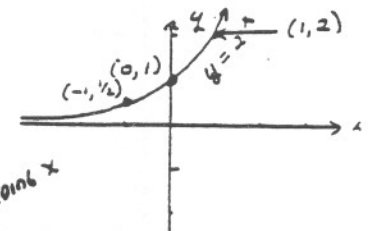


$\{(x, y) | f(x) = |x|\}$
Absolute value function

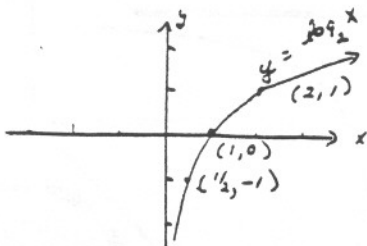


$\{(x, y) | f(x) = [x]\}$
Greatest integer function

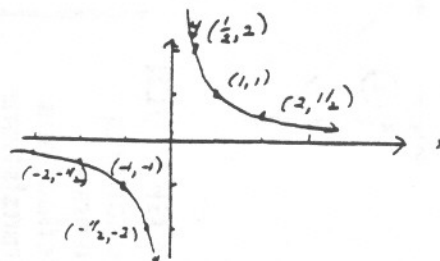
THE VALUE OF $f(x)$ IS ALWAYS AN INTEGER NOT EXCEEDING x



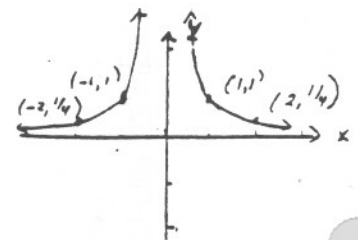
$\{(x, y) | f(x) = a^x\}$
Exponential function



$\{(x, y) | f(x) = \log_a x\}$
logarithmic function



$\{(x, y) | f(x) = 1/x\}$
Rational function



$\{(x, y) | f(x) = 1/x^2\}$
Squared rational function