

SHORELINE COMMUNITY COLLEGE

Go To College For Free!

Career Training at Shoreline May be the Answer to Your Dreams!



Food Stamp Employment and Training (FSET) Program

The FSET Program provides free tuition and services for current Food Stamp Assistance recipients who are not receiving WorkFirst Cash. Services include support for childcare, transportation, clothing, housing, and utility shut-off. For more information, contact:

Kim Cambern
Job Connections Center • 5000 (FOSS) Building, Room 5228
(206) 546-6961 • kcambarn@shoreline.edu



Opportunity Grant Program

The Opportunity Grant is for students enrolled in Automotive, Phlebotomy, Visual Communication Technology, Early Childhood Education, Manufacturing, Accounting and Business Technology. It covers tuition and fees for 45 credits and \$1000.00 for books and tools. For more information, contact:

Matt Houghton
Job Connections Center • 5000 (FOSS) Building, Room 5228
(206) 546-4695 • mhoughto@shoreline.edu



Worker Retraining Program

The Worker Retraining Program provides free tuition and books to four population groups: people who are currently receiving Unemployment Compensation or have exhausted it in the past 24 months; the displaced homemaker; those formerly self-employed; and the vulnerable worker or those in danger of losing their current job. For more information, contact:

Kim Cambern
Job Connections Center • 5000 (FOSS) Building, Room 5228
(206) 546-6961 • kcambarn@shoreline.edu

WorkFirst Program

WorkFirst offers the opportunity to attend Shoreline Community College by paying for tuition, fees, and books for eligible low-income parents. Whether you want to obtain your GED, increase your job skills, earn a certificate or enter a new career, the WorkFirst staff is available to discuss your educational and employment goals. For more information, contact:

Victoria Lauber
WorkFirst • 5000 (FOSS) Building, Room 5214
(206) 546-6957 • vlauber@shoreline.edu

Shoreline
COMMUNITY COLLEGE



Shoreline Community College
16101 Greenwood Ave. North
Shoreline, WA 98133

www.shoreline.edu

*Shoreline Community College provides equal
opportunity in education and employment.*

MORE OPTIONS ON THE OTHER SIDE! ➔

Shoreline Has Career Training and Tuition Options to Get You Closer to Your Dreams!



Veterans Programs

The veterans program coordinator reviews Form DD214 to determine veterans eligibility to receive a 25-50% tuition waiver. In addition, she can assist with program selection, advance pay issues, changes in class schedule, evaluation of military credits, and early release from the military. For more information, contact:

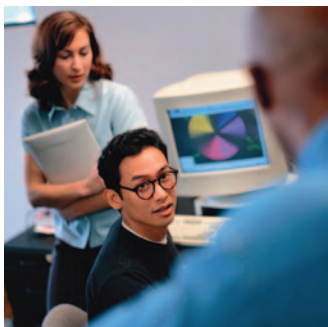
Marge Higby
Veterans Coordinator • 5000 (FOSS) Bldg., Room 5246
(206) 546-4645 • mhighby@shoreline.edu



English as a Second Language (ESL) and General Educational Diploma (GED) Programs

ESL programs assist second language learners with English skills. The GED program offers students an opportunity to prepare to take the GED test. Students pay \$25 per quarter, however, this fee is waived for students of low income status. For more information, contact:

Debby Hunter
ESL/GED/ABE Programs • 5000 (FOSS) Building, Room 5205
(206) 546-5827 • dhunter@shoreline.edu



Equity and Student Connections

This unit includes the Multicultural Center, Women's Center, and Student Leadership Center. In addition to serving students in distinct ways, these Centers join forces to enliven the college's commitment to diversity, equity, and student leadership. Both the Multicultural Center and Women's Center provide access to on and off campus resources as well as scholarship search assistance. For more information, contact:

Lynette Peters or Cecilia Martínez Vásquez
Multicultural & Women's Center • 4000 Building, Room 4106
(206) 546-4715 • lpeters@shoreline.edu or
(206) 533-6618 • cmartinez4@shoreline.edu



Labor & Industry (L&I) and the Department of Vocational Rehabilitation (DVR)

L&I and DVR Programs provide students with free tuition resources. Students must be current clients and receiving assistance from L&I or DVR. For more information, contact:

Angela Hughes
Office of Special Services • 5000 (FOSS) Building, Room 5229
(206) 546-5832 • ahughes@shoreline.edu

www.shoreline.edu